

LARSEN & TOUBRO
Public Charitable Trust


Reaching the Unreached

Paving the pathway to progress



ANNUAL REPORT 2023-24

INDEX

- 
- 01** Chairman's Message
- 07** LTPCT At a Glance
19 YEARS OF IMPACT
- 09** CCDP - A Five-Year Plan
to Transform Remote Region
- 12** Mapping Hope
WHY WE CHOOSE SPECIFIC LOCATIONS
- 22** Tackling Barriers
DELIVERING SOLUTIONS
- 43** Measuring
Success
- 47** Real Lives,
Real Change
- 51** United for
Greater Good
- 53** Financial Overview
& Transparency
- 57** Committed to
Change: Moving
Forward Together

“

The measure of a society is how it treats its most vulnerable. At LTPCT, we believe true progress is achieved when no one is left behind.

”

Mr A.M. Naik
CHAIRMAN



MEXY XAVIER/ FORBES INDIA
PICTURE CREDIT

Dear Friends,

Our Annual Report this year is built around the theme of 'Reaching the Unreached'. This is an India that lies within our borders but remains alien to many- untouched, unreached and unrewarded. True progress, I have always believed, lies not in the spread or scale of what we do, but in the depth of how much we touch lives.

At LTPCT, we have accordingly chosen the road less travelled. We go out of our way to expand the footprint of progress to cover people and places outside the everyday map. We delve deep into the lives of the marginalized and we do our best to ensure that no one is left behind.

In the tribal heartlands of South Gujarat and Maharashtra even aspiration is a luxury. It is here that our mission comes to the fore: breaking the barriers of accessibility and providing tools for empowerment. This year, we expanded educational access to over 23,000 tribal children, delivered healthcare services to 15,000 individuals through our mobile units, and enabled around 3,100 families to achieve financial independence through skill-building and livelihood programmes.

I have been impressed by the fortitude of the communities we serve. From the farmers welcoming the installation of 70 solar lift irrigation projects to mothers prioritizing education for their daughters, these stories fuel our determination. Our work, guided by the principles of inclusivity, empowerment and sustainability, is a collaborative effort with these communities, local leaders, and partners.

As I reflect on our journey, I see not just the strides we have made but also the immense potential that lies ahead. Challenges will persist, but so will our resolve. Together, we will deepen our impact, fostering resilient, thriving communities, and ensuring that opportunity reaches every doorstep.

To our donors, partners, and the entire LTPCT family, thank you for your unwavering belief in this mission. Your support will help us as we work towards 'Reaching the Unreached'.

Warm regards,

A.M. Naik

Chairman, Larsen & Toubro Public Charitable Trust



BOARD OF TRUSTEES

MR. A.M. NAIK

GROUP CHAIRMAN L&T AND CHAIRMAN-LTPCT



DR. KJ KAMAT

MANAGING TRUSTEE



MR. K. RAMAKRISHNAN

FORMER VP, CORPORATE HR, L&T



MR. ATIK DESAI

CHIEF ADMINISTRATIVE OFFICER
HAZIRA WORKS (HZW)



MR. R. GOVINDAN

CORPORATE FINANCE &
CHIEF RISK OFFICER



MR. T. SRIRAMAN

VP & HEAD RESIDENTIAL
BUILDINGS



OPERATIONS TEAM

GAYATRI MISHRA OLETI
HEAD

RUCHA PATKI
PROGRAM MANAGER, HEALTH

AKSHAY KATAD
PROJECT COORDINATOR

KSHITIJ RAUT
ASSOCIATE

SUPRIYA KAMBLE
PROGRAM MANAGER & SECRETARY

WINNY RAWAL
CHIEF EXECUTIVE, ANTC

ANUP MAHAJAN
PROGRAM MANAGER

SANIKA GHADGE
ASSOCIATE

NARENDAR IDNANI
FINANCE ADMINISTRATOR

PRAKIRNA RANA
PROGRAM COORDINATOR, VIDYAA INITIATIVE

BLOSSOM RODRIGUES
PROGRAM COORDINATOR, HEALTH



2022

Education and STEM

Enhanced focus on STEM education through the Science on Wheels program, impacting 46,000+ students.

Sustainability Efforts

Implementation of drip irrigation systems for jasmine plantations and crop diversification programs in Vikramgad.



2021

Integrated Development:

Expansion of CCDP to additional aspirational blocks like Vikramgad, focusing on holistic community development.

Healthcare Initiatives:

Introduction of mobile health units and mental health awareness campaigns in rural Gujarat.



2020

COVID-19 Response

Emergency interventions to support education continuity for 23,000+ children through remote learning and digital resources.



2004

L&T Public Charitable Trust (LTPCT) is established to formalize Larsen & Toubro's commitment to social responsibility.

LARSEN & TOUBRO
Public Charitable Trust



2023

1.21 Million Lives Transformed:

Achievement of a significant milestone in impacting over a million lives through education, skill building, healthcare, and water management initiatives.

Skill India Alignment:

Vocational training at ANTTC aligns with India's National Skill Development Mission.



1.3 Million Lives



2019

Water Management:

Launch of large-scale Jeevan water initiatives, including solar lift irrigation systems and check dam construction in Vikramgad and other regions.



2017-18

Skill Development Expansion

Launch of the Anil Naik Technical Training Centre (ANTTC) in Gujarat to provide vocational training to youth and women.

Advanced Education Program:

Introduction of the Read India Advanced Program in Talasari, focusing on language and math skills for primary students.



2009

Women's Skill Development

Women's Skill Development programme to promote gender equality



2013

Education Initiative:

Launch of the Vidya Program, focusing on improving literacy rates and providing quality education to underprivileged children.



Bridging Gaps & Overcoming Barriers

LARSEN & TOUBRO
Public Charitable Trust

An in-depth look at how LTPCT overcomes the logistical, geographical, and socio-economic barriers to bring its programs to the most inaccessible regions



EDUCATION

Provide access to quality education for underprivileged children



LIVELIHOOD & SKILLS

Create opportunities for skill building among unemployed youth, women, and school dropouts



HEALTHCARE

Improve health outcomes through awareness programs and treatment access.



CLEAN WATER

Address water scarcity with innovative irrigation and sanitation solutions

Key Statistics

- **Communities Served:**
5 districts across Gujarat, Maharashtra & Tamil Nadu
- **Lives Impacted :**
1 Lakh + through education, healthcare, and clean water access

Expected Outcomes

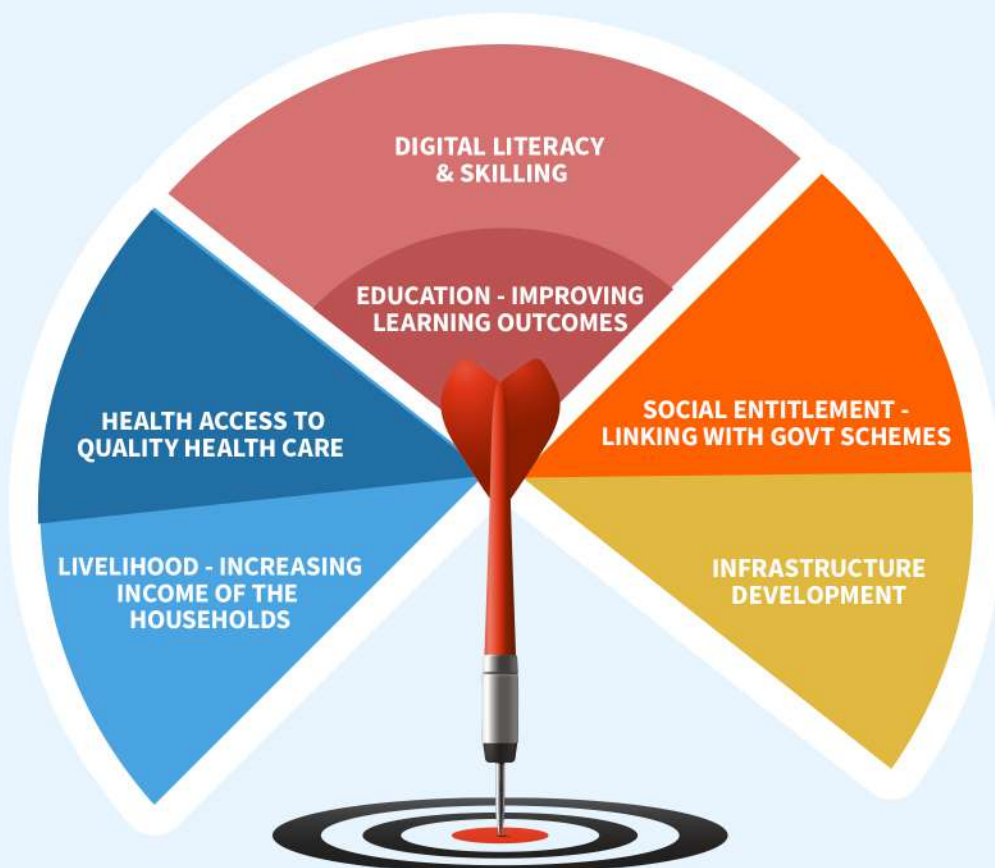
- Increased learning outcomes
- Reduced water scarcity and improved agricultural output
- Healthier communities with lower migration rates
- Sustainable economic growth through skill-based programs



CCDP

A FIVE-YEAR PLAN TO TRANSFORM REMOTE TALUKAS

Comprehensive Community Development Program (CCDP), is a structured, five-year initiative by LTPCT aimed at uplifting remote, underserved blocks through a multi-faceted development approach. Designed to bridge critical gaps in healthcare, education, water access, and economic opportunity, CCDP empowers communities to become self-sufficient and resilient. This program addresses the barriers in accessing basic services, especially in regions where literacy rates, healthcare access, and economic resources are limited. By implementing targeted interventions, CCDP serves as a critical bridge to reduce inequality and foster sustainable growth.





LTPCT AT A GLANCE

19 YEARS OF IMPACT

At Larsen & Toubro Public Charitable Trust (LTPCT), we are driven by a profound commitment to creating visible, sustainable change across India. Established to amplify social responsibility and foster development, our initiatives focus on four critical pillars: education, healthcare, skill building & livelihood and water management. These efforts align with our vision to uplift underserved communities and ensure holistic development for future generations.



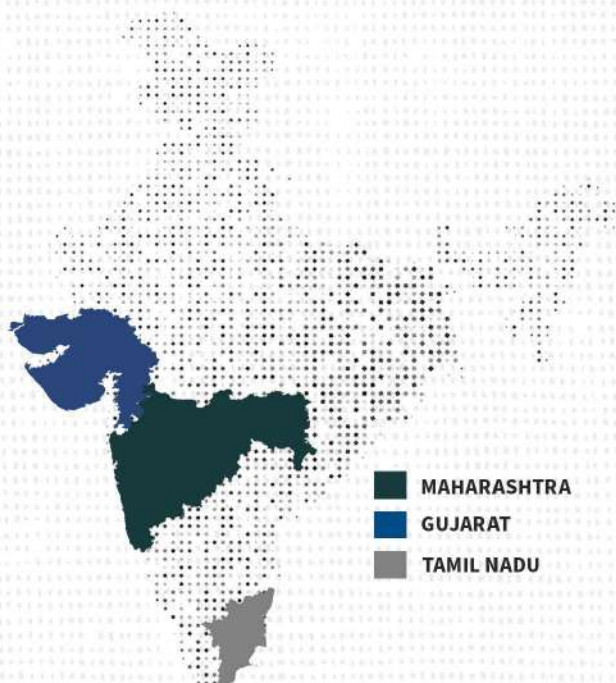
OUR VISION

To bring about sustainable development in society through well-directed activities in the fields of **skill building, water management, education, health, and holistic child development.**



OUR MISSION

EDUCATION	Provide access to quality education for underprivileged children.
SKILL BUILDING & LIVELIHOODS	Create opportunities for skill building among unemployed youth, women, and school dropouts.
HEALTHCARE	Improve health outcomes through awareness programs and treatment access.
WATER MANAGEMENT	Address water scarcity with innovative irrigation and sanitation solutions.



1.21 MILLION

lives transformed through interventions in education, healthcare, and livelihood programs.

Addressing critical issues such as literacy gaps, healthcare access, and water scarcity in regions with **tribal populations exceeding 90%, such as Vikramgad.**

Promoting self-reliance through localized skill-building initiatives and sustainable agricultural practices.

LTPCT is not just a charitable entity—it is a movement to inspire resilience and growth in India's most underserved communities. With every initiative, we are working toward a future where opportunity, dignity and growth are accessible to all.



MAPPING HOPE

Larsen & Toubro Public Charitable Trust (LTPCT) is unwavering in its commitment to driving meaningful change, focusing on regions where impact can be both profound and lasting.

WHAT IS AN ASPIRATIONAL BLOCK?

An aspirational block is a geographic area identified by the Government of India for its potential for transformative growth despite high levels of poverty, limited resources, and infrastructural gaps. These regions are often underserved and face barriers in areas like healthcare, education, and livelihood opportunities. The Government's Aspirational Block Program targets blocks like Vikramgad in Maharashtra to accelerate their development and reduce disparities through focused, data-driven interventions.



FACTS

Vikramgad in Maharashtra, for example, has been identified as an aspirational block due to its high poverty rates, limited infrastructure, and a predominantly tribal population, accounting for around 92% of its residents. Many communities here experience pressing issues like low literacy rates (around 63.78%), widespread water scarcity, and severe health and nutrition deficiencies, making Vikramgad a priority for comprehensive community development



 **VIKRAMGAD IN MAHARASHTRA**



VIKRAMGAD

FOSTERING TRANSFORMATION IN MAHARASHTRA

Vikramgad, designated as an aspirational block nestled in the quiet hills of Maharashtra, represents a region where daily life is an uphill struggle. **The community faces significant challenges, with limited access to education, healthcare, and clean water.** LTPCT has made Vikramgad a focal point for its development efforts, recognizing the urgency to address poverty, unemployment, and social stagnation that have long held the region back. By focusing on holistic solutions, LTPCT is tackling these issues head-on—upgrading schools, providing support for scholarships exams for underprivileged students, and delivering critical healthcare through mobile units. Vikramgad is now on the path to sustainable transformation, where livelihood development programs are empowering locals with new opportunities, allowing them to break free from the cycle of deprivation and build a future filled with promise.

LTPCT's approach to development in aspirational blocks like Vikramgad is both strategic and compassionate, targeting long-term improvements over a five-year period. This block-wise model allows us to focus intensely on critical areas, including healthcare access, clean water initiatives, and education, to create a sustainable infrastructure that empowers communities to thrive. For instance, water scarcity, a long-standing issue in Vikramgad, is mitigated through integrated water management practices such as irrigation projects and rainwater harvesting systems, significantly reducing the need for migration and enhancing agricultural output.

KHAREL - ANTTC

ANIL NAIK TECHNICAL TRAINING CENTRE - A HUB OF EDUCATION AND SKILL DEVELOPMENT



Kharel, Gujarat, is a shining example of LTPCT's commitment to addressing both education and skills development in marginalised communities.

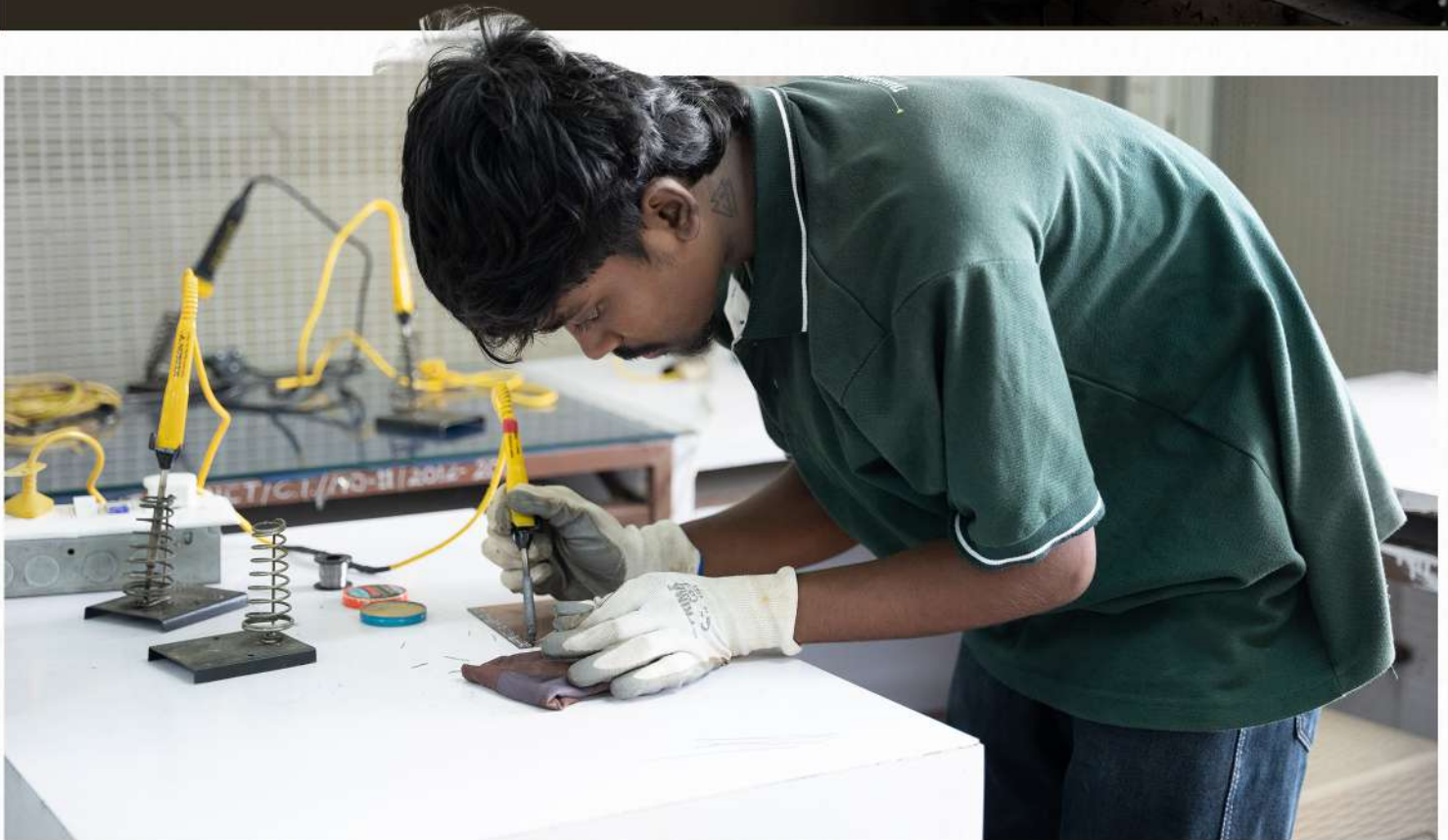


As a location home to the **Anil Naik Technical Training Centre (ANTTC)**, Kharel serves as a vital centre for school dropout youth who are eager to improve their lives through technical and vocational training. Since its establishment, ANTTC has enrolled over 2,000 students, providing essential technical and vocational training aimed at empowering youth to secure employment and achieve financial independence. Schools are being enhanced, teacher training is ongoing, and students are encouraged to pursue both academic and vocational paths.

The courses offered at ANTTC include

Electrician, Solar, Automotive, Tailoring and Beauty & Wellness

ensuring that students are well-equipped to enter the workforce. LTPCT's interventions at Kharel focus not only on vocational skills but also on enhancing school education and ongoing teacher training, promoting a holistic approach to learning.



From our perspective, investing in education and skill development is vital for several reasons:

Empowerment: Providing youth with practical skills helps them to break the cycle of poverty, enabling them to support their families and contribute positively to the community.

Economic Growth: By enhancing the skills of the local workforce, ANTTC contributes to the broader socio-economic development of the region, fostering an environment where businesses can thrive.

Sustainability: Through skill development, LTPCT helps create self-sustaining futures for individuals, which can lead to more stable communities less reliant on external economic factors.

ANTTC is playing a crucial role in transforming the educational landscape of Kharel, helping individuals build better self-sustaining futures while simultaneously contributing to regional growth and stability. 16



SUBIR

REVITALISING THROUGH COMPREHENSIVE DEVELOPMENT

In the remote aspirational block of Subir, Gujarat, seasonal migration is a harsh reality for many families. Subir is home to a **95% tribal population**, primarily consisting of the Bhil, Rabari, Sidhi, and Ahir communities with a **literacy rate of 74.8%**. The Bhils are the largest tribe, known for their expertise in archery and their deep knowledge of local terrain. The Rabari community, which has pastoral roots, primarily engages in dairy farming. The Sidhi people have a unique cultural heritage, having migrated from East Africa, while the Ahirs are known for cow herding and agricultural activities.

Subir faces significant challenges regarding water scarcity, with **96.7% of agricultural land un-irrigated**. The block has a total area of approximately 782 hectares, with around 756 hectares dedicated to agriculture, predominantly un-irrigated. Sustainable water management interventions are crucial, as much of the agricultural land remains vulnerable to seasonal droughts. The urgent need for improved water access and irrigation systems is highlighted by the reliance on seasonal migration, where families would leave in search of work for **wages as low as Rs. 250 per day**. Driven by necessity, residents have to leave their homes for months at a time, often travelling far to secure basic income. Recognizing this cycle of struggle, LTPCT's intervention in Subir has become a turning point. LTPCT's sustainable water management in Subir supports stable livelihoods by improving irrigation and clean water access, reducing migration pressures. Alongside this, digital skilling programs and the Science on Wheels initiative enhance education by fostering STEM engagement. Health initiatives focus on maternal and child care, providing essential services, nutritional guidance, and early childhood support. Together, these efforts drive holistic development, improving quality of life and building a resilient, self-sustaining community.



VANSDA

A JOURNEY OF HOLISTIC TRANSFORMATION

Nestled in Gujarat's tribal belt, Vansda is a region rich in natural beauty, surrounded by forests and hills, yet it faces significant socio-economic challenges. With over **90% of its population belonging to Scheduled Tribes**, including Bhils, Dhodias, and Gamits, the region struggles with low literacy rates, inadequate healthcare, and limited livelihood opportunities. The Bhils are known for their deep connection to the land and forest, while the Dhodias and Gamits have rich agricultural traditions but face barriers due to water scarcity and lack of resources. A majority of Vansda's agricultural land is un-irrigated, forcing dependence on rainfed farming and reducing productivity. Through solar lift irrigation systems, LTPCT is transforming agricultural productivity in Vansda, enabling farmers to cultivate up to three crops annually, including paddy, vegetables, and pulses. These systems reduce dependency on erratic rainfall and seasonal migration, allowing families to sustain livelihoods locally. Limited access to quality education leads to high dropout rates and minimal skill development. The Vidya program addresses educational gaps by introducing digital literacy initiatives, improving school infrastructure, and training teachers. STEM-focused initiatives like Science on Wheels bring interactive science education to tribal children, sparking curiosity and innovation. Most families rely on subsistence farming or daily wage labor, with few opportunities for economic growth. Programs like tailoring empower women and youth, helping them achieve economic independence. LTPCT also supports sustainable agricultural practices, providing training and access to modern farming techniques. Through mobile health units and community health programs, LTPCT addresses maternal health, child nutrition, and preventive care. These interventions have significantly improved health outcomes in the region.

LTPCT's holistic approach in Vansda has not only improved agricultural yields and reduced migration but also enhanced access to education and healthcare. By empowering local communities with skills, resources, and knowledge, LTPCT is fostering a resilient, self-sustaining Vansda, where families can thrive in harmony with their environment. Vansda's transformation underscores the power of community-driven development, blending innovation with cultural sensitivity to build a brighter future for all.





EMPOWERING MINDS THROUGH EDUCATION

The Vidyaa program creates opportunities for quality education in underprivileged communities, fostering curiosity and resilience among over 23,000 children. By integrating **STEM education** through a Hub-and-Spoke model, with science centers and mobile labs, it brings concepts like physics, biology, and space closer to rural classrooms. Over 700 teachers in Gujarat have been trained to deliver this mission effectively.

Initiatives like the **Second Chance Program** empower school dropouts, particularly women, to pass their 10th standard exams, building confidence and pathways to independence. Programs such as Science on Wheels, Young Science Leader Competition, and Promoting Sports in Schools nurture creativity, teamwork, and holistic growth.



By adopting a "life-cycle" approach, Vidya provides continuous academic support, including **Early Childhood Care & Education** and **Transitional Education**, ensuring marginalized children can succeed. Vidyaa bridges socio-economic gaps, empowering communities and promoting long-term social impact through the transformative power of education.







Early Childhood Care & Education

Focuses on enhancing foundational learning for preschoolers, impacting 45,000 children and renovating Anganwadi centers to create safe, engaging environments. Training Anganwadi Sevikas ensures effective early childhood care and community support.



E-Learning

Promotes online learning resources to increase digital literacy for children in remote areas, benefiting 30,000 students with access to quality education through technology.



Financial Literacy in Schools

Teaches students financial management and essential skills, including a Tally course for 25,000 students in grades 11 and 12.





60,000 STUDENTS IMPACTED

Schools

Result Improvement

Improves academic performance through targeted strategies, impacting 60,000 students across various schools.



Promoting Science in schools



SCIENCE

TECHNOLOGY

ENGINEERING

MATHEMATICS

Promoting Science in Schools

Engages **20,000 students in STEM education**, with **10,000 students** participating in the Science on Wheels mobile lab for hands-on learning and scientific exploration.

Young Science Leader Competition

Encourages scientific thinking among youth, **attracting 3,000 students to foster innovation and a competitive spirit.**

Teachers' Training

Enhances **teaching quality by training 5,000 teachers**, significantly improving classroom dynamics and student engagement.

Second Chance Program

Supports **2,000 school dropouts, especially young women**, by offering educational assistance to help them complete their 10th exams and empowering them with skills for future independence.



Digital Literacy

Enhances digital skills through basic programs like Microsoft Office, benefiting 50,000 students, preparing them for the modern workforce.



Transitional Education

Helps children transition smoothly from Anganwadi to formal schooling, ensuring a solid foundation for early academic success. 1000 children impacted so far



Remedial Support for Students

Equips children with essential life skills to navigate academic pressures and challenges, fostering effective coping mechanisms and promoting personal growth. 1000 children impacted so far.



Promoting sports in schools

Encourages active lifestyles and sportsmanship, impacting 3600 students through enhanced sports programs such as chess and marathons.



3600
STUDENTS



Code Unnati Program

A collaboration with SAP and Pratham InfoTech Foundation, this program promotes digital literacy across 255 schools in Navsari and Dang districts, reaching Grades 1-12. Students engage in Digital Melas, with 11 schools selected for a District-Level School Mela, showcasing their innovative digital models.





Aarogya

STRENGTHENING HEALTH AT THE GRASSROOTS

At L&T Public Charitable Trust (LTPCT), our Aarogya initiative is dedicated to delivering essential healthcare to some of India's most underserved communities, particularly in remote and tribal areas. Through mobile healthcare units and community-based health projects, we ensure that healthcare reaches even the most isolated populations. Our mobile clinics play a crucial role, providing routine check-ups, basic treatments, and preventive care, reaching over 1.3 million beneficiaries in regions with limited access to medical facilities.





We believe that collaboration is key to amplifying our efforts, which is why we partner with local healthcare providers, NGOs, and Government health initiatives to strengthen the healthcare systems in these areas. Arogya's initiatives contribute to a range of health goals, from maternal and child health to curable blindness and the prevention of non-communicable diseases (NCDs). Ultimately, our aim is not just to address immediate healthcare needs, but to foster lasting wellness, build resilience, and instill healthy behaviors within the communities we serve. Through Arogya, we remain committed to making healthcare accessible, affordable, and culturally relevant for everyone.



MATERNAL & CHILD HEALTH INITIATIVES

These initiatives focus on the first 1,000 days, particularly improving the use of Maternal and Child Health (MCH) services, reducing low birth weight (LBW) among infants, and addressing high-risk pregnancies, reaching a large number of mothers and children to support healthy pregnancies and early childhood development.

ADOLESCENT HEALTH

Targeting adolescents through school and community-based programs, this initiative promotes health awareness, counselling, and interventions to address the unique health needs of young people.

CURABLE BLINDNESS

This program is on vision care by conducting vision screenings for both adults and children to detect and treat preventable curable blindness, ensuring improved eye health for vulnerable populations.

CAPACITY BUILDING

Training health workers, Anganwadi workers, and community mobilizers is a key part of this initiative to strengthen local healthcare delivery, enabling better community health management and support.

Infrastructure Upgradation: This program enhances healthcare facilities by upgrading sub-centers and block training centres, improving infrastructure such as sanitation, water supply, and waiting areas to support better healthcare services.





INFRASTRUCTURE UPGRADATION

This program enhances healthcare facilities by upgrading sub-centers and block training centres, improving infrastructure such as sanitation, water supply, and waiting areas to support better healthcare services.

HEALTHCARE FOR ALL

By organising health camps focusing on detection and management of non communicable diseases such as diabetes, and anaemia screenings, and timely referrals for further disease management we reduce the gap in out of pocket expenses in healthcare for the underserved populations, including migrant workers, this initiative strives to ensure equitable access to essential healthcare services.

HEALTH SKILLING

LTPCT collaborates with Kotwalwadi Trust to enhance health skilling in underserved areas. This initiative focuses on training community health workers and local leaders in basic healthcare, first aid, and nutrition, equipping them to improve overall health outcomes in their communities. Through this partnership, LTPCT helps build local capacity for health and wellness, fostering sustainable development and better access to essential healthcare services.

COMMUNITY MENTAL HEALTH

PROJECT SWATAH

The SWATAH initiative is dedicated to mental health and well-being, catering to individuals across various age groups. Through counselling services, awareness sessions, and support networks.





BUILDING SKILLS, BUILDING FUTURES

The Uddyam program helps people develop skills so they can build steady, long-term jobs to support themselves and their families. Whether it's through farm-based or non-farm-based opportunities, Uddyam empowers people to break free from the cycle of poverty.

Uddyam's approach extends beyond vocational training—it supports local farmers, providing support with different interventions such as solar drip irrigation units, farm ponds, which provide economic opportunities in rural areas. By fostering entrepreneurship and offering technical guidance, Uddyam ensures that communities can build robust, self-sustaining economies.



VOCATIONAL TRAINING

The Vocational Training component of the Uddyam Program aims to equip individuals from underprivileged backgrounds with marketable skills that increase employability. Through partnerships with local industries around the Anil Naik Technical Training Centre (ANTTC), the program offers courses in various fields, including fabrication, tailoring, electrical work, and solar. The focus is on practical, hands-on learning, ensuring that participants are well-prepared to enter the workforce and secure stable, sustainable employment opportunities.





The Anil Naik Technical Training Centre

(ANTTC), established in 2006 by the Larsen & Toubro Public Charitable Trust (LTPCT) and supported by the Naik Charitable Trust, represents a significant step towards empowering marginalised communities in Kharel, Gujarat. This vocational training hub is dedicated to equipping school dropouts, unemployed youth, and women with practical skills needed for gainful employment. The centre spans 5 acres and is well-equipped with state-of-the-art facilities, offering 13 courses including NSQF-aligned labs, 40-seater classrooms with digital learning capabilities, and an auditorium with a capacity for 700, enabling a conducive learning environment for its students.



At ANTTC, education is rooted in practical knowledge, with courses that span a variety of in-demand trades such as Electrician, Automotive Service Technician, Welder, Beauty Therapist, and Tally Program. What sets ANTTC apart is our commitment to practical, hands-on training. Students appreciate this approach, as it creates a tangible connection to their learning and a marked difference from traditional educational systems. Each course includes a dedicated day (saturday) for **industry visits and workshops**, allowing students to experience real-world environments, understand company cultures, and grasp industry norms. This experiential learning cultivates confidence and prepares them for the workforce.



ANTTC aligns closely with India's National Skill Development Mission and the broader Skill India initiative, which aims to develop a future-ready workforce. By incorporating sector-aligned placement for every program and collaborating with Sector Skill Councils for certifications, LTPCT ensures that its training programs meet national standards and the evolving needs of the job market. The introduction of programs for women, such as Beauty & Wellness Therapist and Tailoring, has increased women participation and it reflects a commitment to gender diversity and empowerment. ANTTC has successfully attracted a broad spectrum of women participants and has broken down stereotypes that have historically limited women's participation in various trades like welding, automotive and solar programs encouraging more women to enter skilled professions.

Furthermore, ANTTC's Second Chance Program provides school dropouts an opportunity to reintegrate into the formal education system while pursuing vocational training, demonstrating a holistic approach to education. The program not only focuses on technical skills but also emphasises the importance of soft skills and digital literacy, which are critical in today's job market.



78%
PLACEMENT

RATE UNDER ANTTC'S TRAINING PROGRAMS

In essence, the initiatives at the Anil Naik Technical Training Center not only address the skills gap in the region but also contribute to sustainable livelihoods for individuals and their communities, particularly women.



■ LIVELIHOODS

The Livelihood program focuses on creating sustainable income sources for vulnerable communities by facilitating access to jobs and entrepreneurial opportunities. Uddyam works with individuals, particularly in rural areas, to help them develop small businesses or secure steady employment. For example, local farmers have been supported in bitter melon cultivation and jasmine farming, where they are provided with training on high-yielding varieties, pest management, and marketing strategies to increase their earnings from these crops. By connecting beneficiaries with local markets and industries, the program improves income levels and enhances economic resilience for families.



■ INSTITUTION BUILDING

Uddyam strengthens local organisations like self-help groups (SHGs) and cooperative units. Initiatives include jasmine cultivation and solar lift irrigation, fostering grassroots entrepreneurship and sustainable business models.



■ AWARENESS & MOBILISATION

Community outreach programs raise awareness about skill development, livelihoods, and government schemes. Workshops and seminars encourage participation and resource utilization for economic growth.

■ CAPACITY BUILDING

Training programs enhance skills in agriculture, entrepreneurship, and leadership. Farmers, youth, women, and community leaders gain the confidence and knowledge to sustain development activities.



■ FARM-BASED AGRICULTURE DEVELOPMENT

Uddyam improves farming productivity through training and technology. It promotes bitter melon and jasmine cultivation, crop rotation, and drip irrigation. Modern equipment, high-yield varieties, and crop diversification ensure food security and income stability.





■ WATER RESOURCE DEVELOPMENT

Solar lift irrigation systems, farm ponds, and rainwater harvesting enhance water availability. These measures support farming, reduce scarcity, and improve rural water access.

■ NATURAL RESOURCE MANAGEMENT

Uddyam focuses on forest conservation, soil health, and water management. Sustainable farming practices protect the environment and build resilience to climate change.



■ ANIMAL HUSBANDRY & LIVESTOCK MANAGEMENT

Animal Husbandry & Livestock Management
Goat breeding programs introduce disease-resistant breeds and better housing for livestock. Veterinary care, breeding techniques, and dairy cooperatives boost productivity and market access.



■ NON-FARM BASED ACTIVITIES

Vocational training in handicrafts, tailoring, and small-scale manufacturing diversified income sources. Uddyam helps establish small businesses in crafts, beauty, and food production, reducing reliance on agriculture. The Jan Sakhi program is one such initiative.

Jan Sakhi Program

EMPOWERING
WOMEN

The Jan Sakhi Program by LTPCT empowers underprivileged women by fostering skill education, health awareness, and entrepreneurship. Using a Hub and Spoke model, Jan Sakhis engage in tailoring, toy-making, and community awareness, boosting their income and independence.

IMPACT

- Strengthens market linkages and connects youth to skill-building programs.
- Enhances health, education, and livelihood outcomes in rural communities.

SUCCESS STORY

Neeru Behen, a Jan Sakhi, has doubled her income by transitioning from domestic help to tailoring and crafting school bags. With her newfound skills, she now supports her children's education and mentors other women, fostering a cycle of empowerment within her community. Her journey highlights the transformative impact of LTPCT's initiatives, which enable individuals to achieve financial independence and inspire change in others.



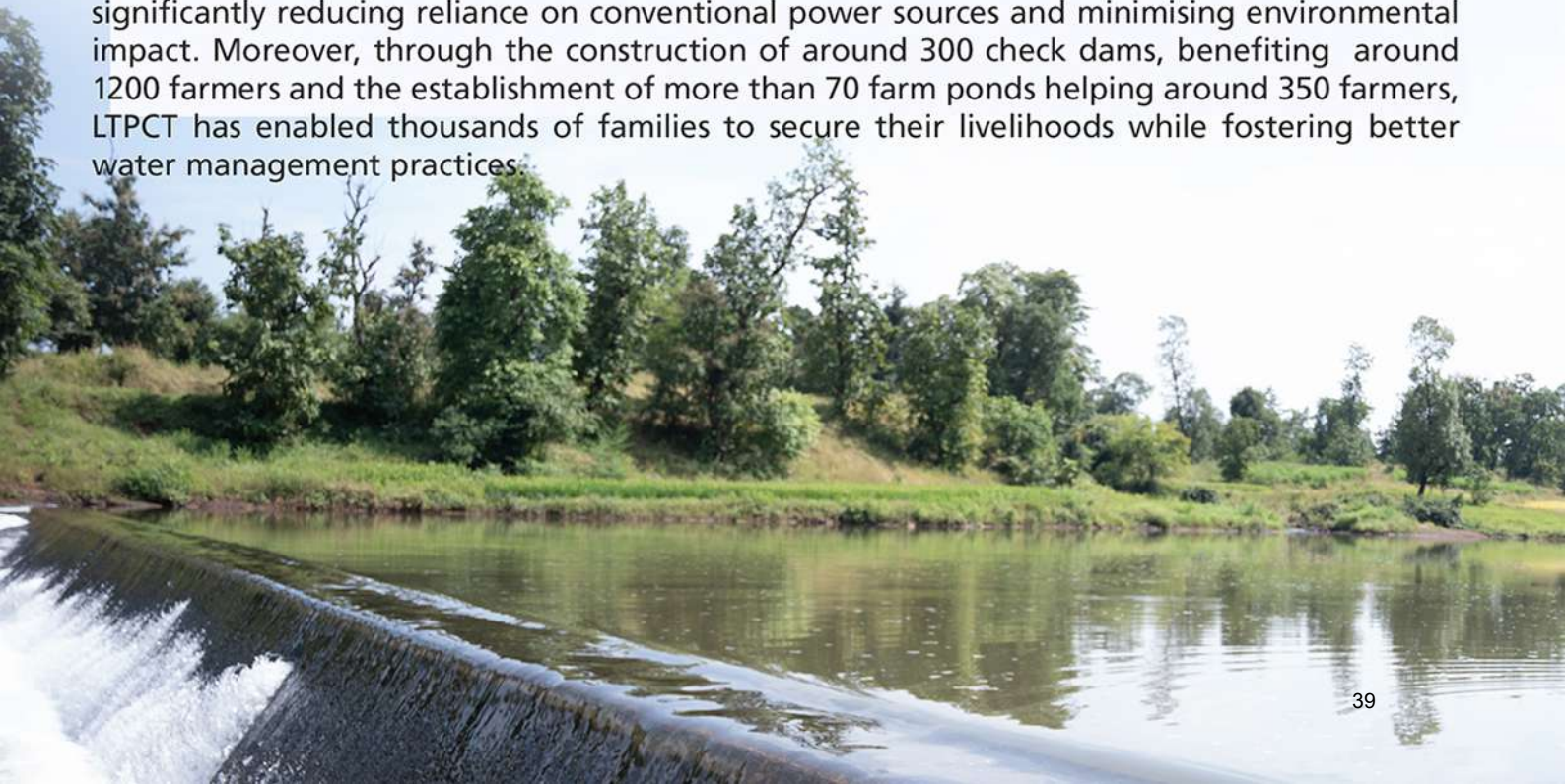


ENSURING ACCESS TO CLEAN WATER

Water is essential to every community, and the Jeevan program provides clean, reliable water sources to help people thrive. The initiative involves implementing Solar Lift Irrigation to support the cultivation of second crops and providing water directly to households through Water Distribution and Supply Systems. With a focus on water resources management, the program has made significant strides in transforming barren regions into thriving agricultural hubs. To date, LTPCT has successfully implemented over 70 solar lift irrigation systems, benefiting more than 2500 farmers. This intervention has revolutionized water accessibility in rural communities, enabling farmers to shift from cultivating just one crop annually to producing up to three crops per year. Farmers now grow diverse crops, including paddy, millets, and vegetables (both creeper and non-creeper varieties), significantly enhancing agricultural productivity and income. By providing a consistent and sustainable water supply, these systems not only improve yields but also empower farmers to make the most of their land throughout the year, fostering economic stability and food security.

2880
FARMERS
BENEFITED

These systems allow farmers to draw water from wells and sources using solar energy, significantly reducing reliance on conventional power sources and minimising environmental impact. Moreover, through the construction of around 300 check dams, benefiting around 1200 farmers and the establishment of more than 70 farm ponds helping around 350 farmers, LTPCT has enabled thousands of families to secure their livelihoods while fostering better water management practices.



The impact of the Jeevan program extends beyond immediate water access; it promotes sustainable agricultural practices that are crucial in today's climate-sensitive environment. By improving irrigation techniques and supporting farmers in adopting better agricultural methods, we have witnessed an **average yield increase of 30%** in crops across beneficiary communities. This has been particularly vital in regions like Maharashtra and Gujarat, where farmers have historically struggled with water scarcity.

LTPCT's water management initiatives have significantly enhanced access to clean water in underserved areas, leading to a 40% reduction in water-related diseases such as diarrhea and dysentery. These interventions include solar lift irrigation systems, improved sanitation facilities, and hygiene awareness campaigns, which collectively ensure safe water practices and healthier communities. By addressing the root causes of waterborne illnesses, LTPCT fosters long-term health benefits and reduces the burden on local healthcare systems.

576

FARMERS BENEFITTED
IN 2023-24

94

VILLAGES REACHED
IN 2023-24

26

SOLAR LIFT UNITS
INSTALLED IN 2023-24

1134

SOLAR PANELS INSTALLED
IN 2023-24

**106,975.2
LITRE**

FUEL SAVED OVER 8 MONTHS

**287,102.4
KG**

CARBON EMISSIONS REDUCED
OVER 8 MONTHS

SOLAR LIFT IRRIGATION PROJECT

This project aims to enhance irrigation facilities for farmers by utilising solar energy. The initiative focuses on providing lift irrigation systems powered by solar energy, which are particularly beneficial in areas where electricity is unreliable or unavailable. These systems use solar energy to pump water from rivers, lakes, or groundwater, lifting it to areas up to 3 kilometers near the river. This provides water to agricultural fields that would otherwise remain dry and unproductive, enabling farmers to irrigate crops in high, arid, or remote locations.

The solar-powered system helps reduce farmers' reliance on fossil fuels and electricity, leading to lower operational costs and promoting environmental sustainability. Farmers can now irrigate their lands more efficiently, increasing crop yield and ensuring a steady income. This innovation not only enhances agricultural productivity but also improves the livelihoods of farmers by providing them with greater control over their irrigation needs, even in challenging geographical areas. By lifting water to previously inaccessible areas, LTPCT's initiative is helping communities overcome barriers to sustainable farming.

The implementation of these systems not only supports agricultural productivity but also contributes to a healthier environment by reducing carbon emissions and fossil fuel consumption. The substantial number of beneficiaries indicates the program's effectiveness in transforming farming practices and enhancing the livelihoods of many families across the region.



287,102.4
KG



106,975.2
LITRES

Water Distribution & Water Supply Systems

LTPCT also focuses on enhancing water distribution and supply systems, ensuring that communities have access to safe and adequate water for domestic and agricultural use. This initiative helps to improve overall public health and quality of life, especially in rural and underserved urban areas. LTPCT also focuses on enhancing

Projects under this initiative include the construction of water supply infrastructure, such as pipelines, new borewells, solar water pump facilities, storage tanks to ensure efficient distribution of potable water. By addressing water scarcity and improving access, these systems have been crucial in supporting not only agricultural needs but also daily living requirements of communities.

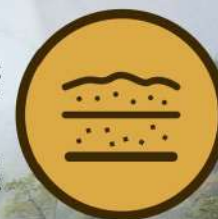
Soil Testing & Land Levelling



The Soil Testing and Land Levelling initiatives aim to enhance agricultural productivity and sustainability for smallholder farmers. These interventions are critical in optimizing land use, improving crop yield, and reducing environmental degradation.



- Provides farmers with insights into soil health, nutrient levels, and pH balance, enabling them to choose the right fertilizers and crops.
- Promotes sustainable farming by preventing overuse of chemical fertilizers, ensuring long-term soil fertility.



- Ensures uniform water distribution during irrigation, reducing water wastage and enhancing crop growth.
- Makes previously unproductive or uneven lands viable for farming, boosting agricultural acreage and income.

SOCIAL ENTITLEMENT PROGRAM

The **Social Entitlement Program** by LTPCT addresses the critical need to connect underserved communities to government welfare schemes and entitlements, tackling issues of exploitation and lack of awareness.

REACH

Blocks: 3
Gram Panchayats (GPs): 87
Villages: 176

LOCATIONS

Vikramgad, Maharashtra
Vansda & Ahawa, Gujarat

Key Government Schemes Addressed

The program focuses on critical government schemes that improve the quality of life for marginalized communities, such as:

e-Shram Card (for unorganized sector workers)

Ladki Behen Scheme (financial assistance for women)

Ayushman Bharat Health Card (health insurance coverage)

Caste Certificates (for social and educational benefits)



30,000

SCREENING
INDIVIDUALS



29,000

APPLICATIONS
SUBMITTED



26,000

SANCTIONED
APPLICATIONS



24,000

UNIQUE
BENEFICIARIES



10,000

TARGETED
ADDITIONAL
BENEFICIARIES

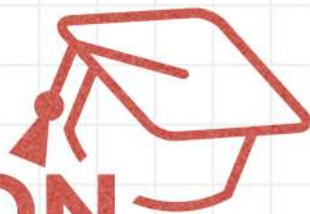


Capacity Building: Community Cadre Trained: 125 individuals

KEY INTERVENTIONS

- Awareness and Outreach
- Elimination of Middlemen
- Government Collaboration
- Stakeholder Engagement
- Documentation Support

EDUCATION



EMPOWERING FUTURE GENERATIONS

40

SCHOOLS
(KHAREL)

SCHOOL RESULT
IMPROVEMENT
PROGRAMME



SCIENCE
IN SCHOOLS

204 SCHOOLS,
11 MOBILE SCIENCE LABS,
37,566 STUDENT



692

TEACHERS' TRAINING

150

LEARNERS

SECOND CHANCE PROGRAM

DIGITAL LITERACY

VIKRAMGAD
15 SCHOOLS, 6000 STUDENTS
KHAREL
115 SCHOOLS

TRANSITIONAL EDUCATION

22 SCHOOLS
436 CHILDREN
(VIKRAMGAD)

REMEDIAL SUPPORT

6 SCHOOLS
333 CHILDREN
(VIKRAMGAD)

SPORTS IN SCHOOLS

24 SCHOOLS
1253 STUDENTS
(VIKRAMGAD)

CODE UNNATI

58 SCHOOLS
75,106 STUDENTS

ECCE (VIKRAMGAD)

100 MOTHERS
34 ANGANWADI CENTERS
539 CHILDREN

FINANCIAL LITERACY IN SCHOOLS

1250 STUDENTS FROM 28 SCHOOLS
(NAVSARI, VANSDA, DANG)

The above data pertains to the year 2023-24

HEALTHCARE



IMPROVING ACCESS TO HEALTH AND WELL-BEING

MATERNAL, CHILD, AND ADOLESCENT HEALTH (VIKRAMGAD, VANSDA, AND AHWA)

1545

ANTENATAL CARE (ANC)
MOTHERS

355

HIGH-RISK PREGNANT
MOTHERS

1020

POSTNATAL CARE
(PNC) MOTHERS

1093

FAMILY
INTERVENTIONS

816

UNDERWEIGHT CHILDREN

SCHOOL HEALTH INITIATIVES

7350

CHILDREN SCREENED

168

CHILDREN
COUNSELLED

4

DISABILITIES
IDENTIFIED

6

TEACHER TRAINING
SESSIONS



ACCESS AND DIAGNOSTICS

2921

DIABETES
SCREENINGS

280

HEALTH CAMPS
ORGANIZED

2930

ANAEMIA
SCREENINGS

2000

VISION
SCREENINGS (ADULTS)

11,527

VISION SCREENINGS
(CHILDREN)

MOBILE HEALTH CLINICS

Targeting 27 villages and a population of 6,500 with promotive, preventive, and geriatric care.

MENTAL HEALTH INITIATIVES (MUMBAI)

1,169

MENTAL HEALTH SCREENINGS

137

REFERRALS FOR SUPPORT

385

MEDICAL CONSULTATIONS

85

SUPPORT GROUPS

CAPACITY BUILDING & TRAINING

19

HEALTH WORKER
TRAINING SESSIONS

96

PARTICIPANTS
TRAINED



INFRASTRUCTURE DEVELOPMENT

- Upgraded 4 Sub-Centers: Including labour rooms, waiting areas, and water/sanitation facilities.
- Support for upgrading Block Health Training Center at Vikramgad

HEALTH SKILLING (KARJAT)

- Paramedical Courses for Tribal Women with 100% Placement Success.

SKILL DEVELOPMENT

BUILDING CAPACITIES FOR A BRIGHTER FUTURE

TOTAL NUMBER OF SKILL DEVELOPMENT TRAINING PROGRAMS CONDUCTED: 13

NUMBER OF PEOPLE TRAINED IN VOCATIONAL SKILLS: 1348

PERCENTAGE OF SUCCESSFUL JOB PLACEMENTS POST-TRAINING: 78%

NUMBER OF WOMEN TRAINED IN TECHNICAL COURSES: 437

PARTNERSHIPS WITH INDUSTRIES FOR PLACEMENT: 200

LIVELIHOOD ACCESS

ENSURING SUSTAINABILITY FOR ALL

44,220

BENEFICIARIES

8,844

HOUSEHOLDS

171

VILLAGES ACROSS 85
GRAM PANCHAYATS

171

NUMBER OF VILLAGES OR
COMMUNITIES PROVIDED
WITH CLEAN WATER

872.10

TOTAL LAND COVERED
IN ACRES THROUGH
COMMUNITY PROJECTS

26

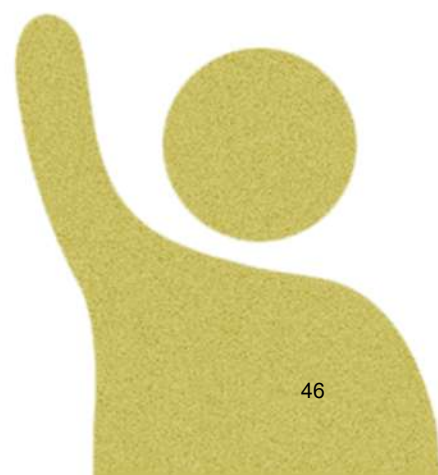
NUMBER OF SOLAR
LIFT IRRIGATION
SYSTEMS INSTALLED

3,780

VEGETABLE
PRODUCTION (IN TONS)

1238.21

LAKHS
TOTAL VEGETABLE SOLD
(IN RUPEES)



'From Fields to Freedom with LTPCT's Second Chance Program'

Urmila Gurunath Kothe, fondly known as 'Tai,' is a 26-year-old mother of two from Vikramgad Sakhare. Married young, her life revolved around long hours in the fields and caring for her family, leaving her dreams of education behind. But LTPCT's Second Chance Program reignited her aspirations, offering women like her a chance to complete their Class 10 Maharashtra State Board exams and transform their lives.

Balancing her household duties and farm work, Urmila attended classes from 12 to 3 pm, determined to reclaim her identity. Her first milestone was learning to sign her name, ending years of dependence on others for important documents. She even taught her 50-year-old mother-in-law to sign, sharing the empowerment she felt.

Beyond academics, Urmila gained digital literacy, learning to navigate WhatsApp, which became essential in her new role as Village Coordinator for Dadade Gram Panchayat. Overseeing 19 hamlets, she conducts surveys, ensures government schemes reach the right families, and raises awareness about irrigation solutions like farm ponds and desilting.

This journey transformed not just her skills but her confidence. Once confined to traditional sarees, Urmila now embraces salwar suits and dresses, reflecting her evolving self-image. Her dreams now extend to her children, envisioning her daughter as a doctor—a goal that once felt impossible.

Urmila's story is a testament to the power of education. With her newfound independence and vision, she inspires her community to believe in second chances and the ability to dream again





'Against All Odds: Lily's Fight for a Better Tomorrow'

In the modest streets of Navsari, Gujarat, 21-year-old Lily Agnel Rudri stands as a beacon of resilience. Born into a family battling poverty and abuse, her life has been shaped by struggles. Her mother, a former waste collector turned daily wage worker, displayed immense courage by filing a case against Lily's abusive, alcoholic father, setting a powerful example for her daughter.

Forced to leave school after the 11th standard to support her family, Lily took on responsibilities that belied her years.

At 18, Lily's life took a transformative turn when she joined the Solar Panel Technician Training program at the Anil Naik Technical Training Centre (ANTTC) in Kharel. As the only girl in a male-dominated classroom, she faced skepticism but won over her peers with her determination and warmth. Completing the course, she secured a job at Goldi Solar, earning a steady income of ₹13,500, all of which she selflessly contributes to her family.

Lily dreams of becoming an Army Officer but has faced setbacks due to her height. Yet, her spirit remains unbroken. She trains in kushti (traditional wrestling) and challenges societal norms, proving that gender is no barrier to ambition.

Empowered by LTPCT, Lily has become her family's primary breadwinner, inspiring young girls with her unwavering belief.

“Fight for yourself and your dreams. If I can do it, so can you.”



DARSHANA BEHEN'S JOURNEY FROM UNCERTAINTY TO HOPE

In Chonda, a village in the Vansda block, Gujarat, a 25-year-old, Darshana Behen Vinesh Bhai Gawda's story is one of courage and transformation. Married at 20, Darshana entered a multi-generational household, carrying the weight of family responsibilities. When she became pregnant for the first time, she faced uncertainty, unaware of the nutrition and care needed for a healthy pregnancy. Like many women in rural India, she navigated this crucial time without proper guidance.

Her life changed when LTPCT, in partnership with the Chetna Foundation, brought maternal health programs to her village. Through these programs, Darshana learned about the importance of nutrition, regular check-ups, and understanding her body's needs. **"When they explained the 1000 Days approach, it was like a light turned on for us,"** she recalls. For the first time, she understood how to take care of herself and her baby.

But this change didn't stop with Darshana. The program involved her entire family—her husband, parents, and even grandparents—helping them realize that a woman's health during pregnancy is a shared responsibility. **"We now go every month as a family for check-ups,"** her husband shares. **"Knowing we can monitor the baby's health has brought us peace of mind."**

In her second pregnancy, Darshana felt empowered. She knew what to expect, and her family stood by her every step of the way. Today, she's an advocate for maternal health in her community, encouraging other women to take charge of their well-being.

Darshana's story is a reminder of the power of education, support, and family unity. Thanks to LTPCT's healthcare programs, she went from uncertainty to confidence, and now, she's helping other women do the same. It's proof that when we reach the unreachable, lives change.



DARPAN SOLAR GROUP SHAPING TOMORROW

In a quiet village by the Gira River, nine women came together with a shared dream: to break free from a life of struggle and limited opportunity. For years, their livelihoods were tied to the unpredictable rains, leaving their fields dry for most of the year. The Gira River flowed nearby, but without the means to harness its water, they had little hope. Many thought about leaving for the city, but then LTPCT arrived, offering not just help but a fresh chance for a brighter future.

The journey began with a simple visit to a solar unit, where the women saw how renewable energy could change their lives. Inspired, they returned home with new hope. LTPCT stepped in to bring infrastructure—a borewell, a solar-powered water pump, and pipelines that reached every home within 100 meters. For the first time, they had a steady water supply. It wasn't just water; it was a lifeline.

With this new resource, the women transformed their barren fields. They could now grow crops twice a year instead of just once. Their yields doubled, and their incomes soared. **From ₹30,000 to ₹80,000** in just one season—a change they never imagined. ***“We’re not just surviving anymore, we’re thriving,”*** one woman said, her voice full of pride.

But the story doesn't end there. Recognizing the demand for water, the group decided to share their pump with neighbouring farmers, charging ₹20 per hour. They've saved ₹13,400 so far, and are planning to introduce drip irrigation to make every drop count.

With stable incomes, they're giving their children the future they dreamed of. One woman beamed,

“My daughter wants to be a doctor. For the first time, I truly believe it's possible.”

Darpan Solar Group's transformation is proof of what happens when people are given the tools and support to succeed. These women have found strength in each other, turning their dreams into reality and creating a self-sufficient, thriving community. **Their journey is a testament to the power of hope, hard work, and the belief that change is possible—no matter where you start.**



OUR PARTNERS

HEALTH

CHETNA Foundation, Ahmedabad
Child Help Foundation, Mumbai
Community Development Trust , Coimbatore
Hand In Hand, Kattupalli & Chennai
Institute for Exceptional Children, Mumbai
J.V. Gokal Charity Trust, Mumbai
Kotwalwadi Trust, Neral
Laxi Care Foundation, Surat
Prayas Trust, Chennai
Rotary Club of Bombay, Powai
SAMPARC Foundation, Mawal, Pune
Sneh Deep Trust, Mumbai
Vision Spring, New Delhi
WESTRIC Trust, Coimbatore
Wellcorp Trust, Kupkam
Prayas Trust, Chennai

HEALTH CENTERS

L&T Anti-Retroviral Therapy (ART) Center -
Koldongari, Andheri
L&T Health Center, Coimbatore
Prayas Medical Center, Chennai
L&T Health & Dialysis Center, Surat
L&T Health & Dialysis Center, Vadodara
L&T Medical Center, Lonavala
Nirali - A M Naik Charitable Healthcare Facility,
Powai

EDUCATION

Agastya International Foundation, Bengaluru
CHETNA Foundation, Ahmedabad
Diganta Swaraj Foundation, Nashik
Dr. Manibhai Desai Navchetana School
-Chondha
Naik Charitable Trust, Mumbai
Orion Education Society, Kolkata
Pratham Education Foundation, Mumbai
Pratham Infotech Foundation, Mumbai
SQ Planateria, Mumbai
Vipla Foundation, Mumbai
Malati Vaidya Smriti Trust

WATER & LIVELIHOODS

Access Development Services, Delhi
Aga Khan Rural Support Program, Dang
Agrinext Consultancy, Pune
Arpan Seva Sansthan, Udaypur
BAIF Development Research
Foundation-Gujarat
Haqdarshak Empowerment Solutions
Private
Limited, Bangaluru
Vrutti Impact Development, Bangaluru

SKILL BUILDING

Orion Education Society, Kolkata
National Skills Development Corporation,
Delhi

MONITORING & EVALUATION AND CAPACITY BUILDING

Ausra Health
Givegrant
Map my India
S2 Infotech
Social Lens Consulting Pvt Ltd
SYS Computer Foundation
Think Through Consultancy

With heartfelt gratitude, we thank our partners
for their unwavering support in making our vision a reality.



DISTRICT DANG



PALGHAR



NAVSARI

FUNDING PARTNERS

L&T Welfare Company Ltd



Summary of Expenditure Schedule - VIII

The Maharashtra Public Trusts Act, 1950

Name of the Public Trust: LARSEN & TOUBRO PUBLIC CHARITABLE TRUST

Registration No: E 22226

Balance Sheet As at March 31, 2024

FUNDS & LIABILITIES	Rs.	Rs.
Trusts Funds or Corpus		
Balance as per last Balance Sheet	2,899,830,028	
Corpus received during the year	38,009,520	
		2,937,839,548
Other Earmarked Funds		
(Created under the provisions of the Trust Deed or Scheme or out of the Income)		
Depreciation Funds		
Sinking Funds		
Reserve Fund		
Any other Fund		
Grant for CSR & Spent		
Grant for CSR - L&T Welfare Company Limited - FY 22-23	2,373,000	(1,016,000)
Spent for CSR - L&T Welfare Company Limited - FY 22-23	(3,389,000)	-
Grant for CSR - L&T Realty Developers Limited (CHI)	20,000,000	-
Spent for CSR - L&T Realty Developers Limited (CHI)	(20,000,000)	-
Grant for CSR - LTIMindtree Limited - FY 23-24	35,000,000	-
Spent for CSR - LTIMindtree Limited - FY 23-24	(35,000,000)	-
Grant for CSR - L&T Technology Services Limited - FY 23-24	5,000,000	
Spent for CSR - L&T Technology Services Limited - FY 23-24	(5,000,000)	(23,826,987)
Grant for CSR - Larsen & Toubro Limited - FY 23-24	80,425,438	
Spent for CSR - Larsen & Toubro Limited - FY 23-24	(104,252,425)	(14,569)
Grant for CSR - Redington - FY 23-24	2,801,426	
Spent for CSR - Redington FY 23-24	(2,815,995)	
Loans - Secured or Unsecured		
From Trustees		
From Others		
Liabilities		
For Expenses	72,549,826	
For Advances	10,000	
For Security Deposits Received	708,000	
For Sundry Credit Balances	32,700,237	
For Others	2,471,610	108,439,673
Income and Expenditure Account		
Balance as per last Balance Sheet	574,617,642	
Less :- Appropriation, if any		
Less :- Deficit as per Income and expenditure Account	11,271,989	
Add :- Surplus as per Income and expenditure Account		
		585,889,631
TOTAL		3,607,311,296

Summary of Expenditure Schedule - VIII

The Maharashtra Public Trusts Act, 1950

Name of the Public Trust: LARSEN & TOUBRO PUBLIC CHARITABLE TRUST

Registration No: E 22226

Balance Sheet As at March 31, 2024

PROPERTY AND ASSETS		
Immovable Properties - At cost		
Balance as per last Balance Sheet	2,899,830,028	
Additions during the year		
Less :- Sales during the year	38,009,520	
Depreciation up to date		2,937,839,548
Investments		
Mutual funds Schedule -1 A (Market value as on 31 March, 2024 Rs.36,68,06,994)	320,810,741	
Government of India Bonds Schedule - 1 B (Market value as on 31 March, 2024 Rs NIL)		
Bonds Schedule - 1 C (Market value as on 31 March, 2024 Rs.317,54,75,259)	3,036,753,807	
Investment in Fixed Deposit		
Provision for Diminution in value	2,674,057	
		3,360,238,605
Fixed assets Schedule -2		
Deposit		35,289,250
		509,590
Current Assets & Advances		
To Trustees		
To Employees		
To Contractors	3,481,745	
To Mutual Funds	-	
To Interest Receivable	81,694,071	
To Prepaid Expenses	1,574,852	
To Tax Deducted at Source & Self Assessment Tax	42,480,082	
		129,230,750
Cash and Bank Balances		
(a) In Savings Bank Account with HDFC Bank - Mumbai	58,683,452	
(a) In Savings Bank Account with HDFC Bank -CSR Mumbai	15,179,674	
(a) In Savings Bank Account with HDFC Bank - Surat	123,324	
(a) In Savings Bank Account with HDFC Bank - Vadodra	28,518	
(b) In Savings Bank Account with ICICI Bank - Mumbai	7,604,009	
(c) In Savings Bank Account with Dena Bank- Kharel	384,657	
	82,003,635	
(a) With the Trustee	-	
(b) With the manager	39,467	
		82,043,101
Income and Expenditure Account		
Balance as per last Balance Sheet	574,617,642	
Less :- Appropriation, if any		
Add :- Deficit as per Income and		
Less :- Surplus Expenditure Account	11,271,989	
TOTAL		3,607,311,296

Summary of Expenditure Schedule - IXC

The Maharashtra Public Trusts Act, 1950

Name of the Public Trust: LARSEN & TOUBRO PUBLIC CHARITABLE TRUST

Registration No: E 22226

Balance Sheet As at March 31, 2024

	Rs.	Rs.
I. Income as shown in the Income and Expenditure Account (Schedule IX)		260,014,498
II Items not chargeable to Contribution under Section 58 and Rules 32 :		
(I) Donations received from other Public Trusts and Dharmadas		
(ii) Grants received from Government and Local authorities		
(iii) Interest on Sinking or Depreciation Fund		
(iv) Amount spent for the purpose of secular education		
(v) Amount spent for the purpose of medical relief	76,060,783	
(vi) Amount spent for the purpose of veterinary treatment of animals	44,307,897	
(vii) Expenditure incurred from donations for relief of distress caused by Scarcity, drought, flood, fire or other natural calamity		
(viii) Deductions out of income from lands used for agricultural purposes :-		
(a) Land Revenue and Local Fund Cess		
(b) Rent payable to superior landlord		
(c) Cost of production, if lands are cultivated by trust		
(ix) Deductions out of income from lands used for non-agricultural purposes :-		
(a) Assessment, cesses and other Government or Municipal Taxes		
(b) Ground rent payable to the superior landlord		
(c) Insurance premia		
(d) Repairs at 10 per cent of gross rent of building.		
(e) Cost of collection at 4 per cent of gross rent of buildings let out		
(x) Cost of collection of income or receipts from securities, stocks, etc at 1 per cent of such income		
(xi) Deductions on account of repairs in respect of buildings not rented and yielding no income, at 10 per cent of the estimated gross annual rent		120,368,680
Gross Annual Income chargeable to contribution Rs -		139,645,818

FINANCIAL SCHEDULE - IX

The Maharashtra Public Trusts Act, 1950

Name of the Public Trust: LARSEN & TOUBRO PUBLIC CHARITABLE TRUST

Registration No: E 22226

Balance Sheet As at March 31, 2024

EXPENDITURE	Rs.	Rs.
To Expenditure in respect of properties		6,568,023
To Establishment Expenses		
To Remuneration to Trustees		
To Remuneration (in the case of a Math) to the head of the Math including his household expenditure, if any		
To Income Tax Prior Account-		
To Depreciation		6,573,031
To Loss on Sale of Securities (Net)		8,000
To Amount transferred to Reserve or Specific Funds		
To Expenditure on objects of the Trust		
(a) Religious		
(b) Educational		
(c) Medical Relief		
(d) Poverty Alleviation		
(e) Other Charitable Objects	76,060,783	
	44,307,897	
	71,565,305	235,593,454
To Surplus carried over to Balance Sheet	43,659,469	11,271,989
Total		260,014,498

INCOME	Rs.	Rs.
By Rent (accrued) (realised)		
By Interest		
On Securities	248,244,938	
On Others		
On Bank Accounts	967,912	
On Fixed Deposits (HDFC Limited)	92,459	
		249,305,309
By Income from mutual funds		
Gain on redemption of mutual funds	6,342,795	
		6,342,795
By Profit on Sale of Fixed asset		
By Donations in Cash or Kind		355.428
By Transfer from Reserve		
By Miscellaneous income		4,010,966
By Deficit carried over to Balance Sheet		
Total		260,014,498

Moving Forward Together

LARSEN & TOUBRO *Public Charitable Trust*

As we draw the curtains on the year 2023-24, LTPCT stands at the intersection of hope and possibility, inspired by the resilience of the communities we serve. Our belief that "areas can be small, but the impact of people must be huge" is embodied in the progress we've witnessed, particularly in Gujarat's tribal regions, where thousands of individuals have experienced meaningful growth. Every initiative we undertake tells a story of untapped potential. Take Lily, who transformed her future through vocational training at the Anil Naik Technical Training Centre, becoming a skilled electrician. Her journey not only changed her life but also inspired others to dream big. In Subir, sustainable water management has revived agriculture, enabling 700+ families to return home and thrive, free from seasonal migration. These efforts focus on long-term growth, cultivating resilience, and building a sustainable future.

At LTPCT, we know that change is a gradual process, marked by challenges. Yet it is in these challenges that we find our purpose: creating inclusive pathways for communities to rise and succeed. As we move forward, let us carry the light of these stories in our hearts. Together, we can weave a narrative of empowerment that resonates beyond borders, echoing the dreams and aspirations of countless individuals. Thank you for your unwavering support in this transformative journey. Let us continue to forge ahead, committed to change, and dedicated to building a brighter tomorrow for all.

LARSEN & TOUBRO

Public Charitable Trust



Larsen & Toubro Public Charitable Trust
Landmark (A), 3rd Floor, Suren Road
Near WEH Metro Station, Andheri East
Mumbai 400093



ltptct@larsentoubro.com



www.lnttrust.org