



# Evolution Empowerment Acceleration

Advancing  
TOGETHER



ANNUAL REPORT 2022-23

# TABLE OF CONTENTS



## 01 TABLE OF CONTENTS

## 02 CHAIRMAN'S NOTE

## 04 BOARD OF TRUSTEES

## 05 ABOUT LTPCT

Vision, Mission, Values, Areas of Intervention, Guiding Principles, Cross Cutting Themes

## 08 VIDYAA

Education that matters

## 24 UDDYAM

Access to Equitable Livelihood and Sustainable Skill Development

## 45 AAROGYA

Health that Strengthens

## 57 JEEVAN

Sustainable Management and Equitable Access to Water



## 63

## SUMMARY OF EXPENDITURE

Balance Sheet -  
Schedule VIII and IX C

## 60 STORIES OF ACCOMPLISHMENT

## 62 PARTNERS

*Dear Friends,*

It is with great pleasure that I present the annual report for the fiscal year 2022-23, encapsulating a year of remarkable progress and transformative initiatives undertaken by our dedicated teams. Our efforts align with our vision of Sustainable Development for Society, empowering lives through improved education and health by creating opportunities for underprivileged individuals to access quality education, skill-building, and healthcare.

Our commitment to sustainable development and empowerment has driven us to extend our programs to new regions, reaching out to the poorest of the poor and addressing the unique needs of diverse communities. This year has witnessed significant strides in our commitment to program evolution, empowerment, acceleration, and collaboration, shaping a positive impact on the lives of those we serve.

The expansion of our programs across Vidyaa - Education, WASH - Jeevan, Uddyam: Livelihood & Skill-building, and Aarogya - Health signifies our dedication to reaching the last mile.



**Mr. A. M. Naik**  
CHAIRMAN

“

Our approach remains "One inch breadth and One mile deep," emphasizing the importance of remaining focused yet delving deeply into our work. Throughout the year, our teams have worked tirelessly to bridge the gap between the requirements of marginalized sections and the harsh realities they endure.



**VIDYAA PROGRAM:** It has seen the introduction of impactful initiatives, including the Educational Engagement Program in Vikramgad, aimed at improving the transition from Anganwadi to formal schooling and addressing accessibility challenges. Similarly, the Second Chance program empowers school dropouts, particularly young girls and women, opening doors to higher education and livelihood opportunities. In Chondha Village, our intervention through the construction of 'Rajmata Jijabai Kanya Chhatralaya,' Girls Hostel, Gram Panchayat, and Community Hall, reflects upon our commitment to holistic development. The 'Learn and Teach' initiative, engaging retired teachers from Surat to enhance learning outcomes in Vidyaa - 40 Schools, exemplifies our innovative approach to education.

**JEEVAN PROGRAM:** In our commitment to accelerating growth opportunities, we have expanded initiatives under the WASH and Livelihood verticals. Building on the success of our WASH initiative in Maharashtra, we have extended our reach to Gujarat, focusing on Solar Lift irrigation, water source enhancement, and efficient utilization.

**UDDYAM PROGRAM:** In our livelihood efforts, the program focuses on active business development, governance, and leadership. Initiatives such as the establishment of a Cashew Processing Unit (CPU) and Warli units contribute to institutional development. Our Uddyam Skill Development initiative addresses the demand for skilled professionals in rural areas, fostering economic growth. We have also introduced a Health Skilling initiative in Neral, Karjat, offering a General Duty Assistant (GDA) Basic course.

**AAROGYA PROGRAM:** The SWATAH project in Mumbai is dedicated to community-based mental health, fostering well-being across various age groups. The Center for Special Children Project (CSC) further exemplifies our commitment to guiding disabled children through rehabilitation and nurturing their educational potential in urban slums and schools.



“

I applaud the outstanding contributions of every team member in transforming plans into tangible actions, yielding meaningful outcomes. The commitment of the ground team is warmly acknowledged, and their devotion resonates with the heartfelt appreciation of the marginalized and underprivileged individuals whom we support.

I extend deep gratitude to our partners for their steadfast belief and support in our vision, aimed at promoting visible and sustainable development in society through well-directed initiatives in the fields of vocational training, water management, holistic child development, and healthcare.



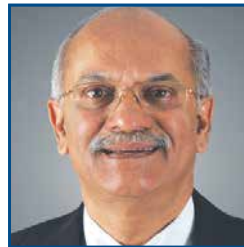
# BOARD OF TRUSTEES



**Mr. A.M. Naik**  
GROUP CHAIRMAN L&T,  
CHAIRMAN -LTPCT



**Dr. K J Kamat**  
MANAGING TRUSTEE  
LTPCT



**Mr. K. Ramakrishnan**  
FORMER VP,  
CORPORATE HR, L&T



**Mr. Atik Desai**  
CHIEF ADMINISTRATIVE OFFICER  
HAZIRA WORKS (HZW)



**Mr. R. Govindan**  
CORPORATE FINANCE &  
CHIEF RISK OFFICER



**Mr. T. Sriraman**  
VP & HEAD RESIDENTIAL  
BUILDINGS

## OPERATION TEAM

**Ms. Gayatri Mishra Oleti**  
HEAD OPERATION

**Mr. Narendar Idnani**  
FINANCE ADMINISTRATOR

**Ms. Jyoti Nimbhorkar**  
PROGRAM MANAGER,  
LIVELIHOODS

**Ms. Rucha Patki**  
PROGRAM MANAGER

**Ms. Supriya Kamble**  
PROGRAMME MANAGER &  
SECRETARY

**Mr. Rohan Pawar**  
ASSOCIATE

**Ms. Asawari Shiposkar**  
CONSULTANT IT

# ABOUT US



Under the leadership of Group Chairman Mr. A.M. Naik, Larsen & Toubro Public Charitable Trust (LTPCT) was established in 2004 with a vision to drive visible and sustainable societal development. LTPCT encourages employees to give back to the community and instills philanthropic values across the organization.

LTPCT represents a unique confluence of philanthropy and the execution capabilities of one of India's largest and most respected conglomerates. The Trust began its initiatives in locations such as Mumbai and the tribal block Talasari in Maharashtra's Palghar district, later expanding to Kharel, Naysari, and other regions. Since its inception, LTPCT has positively impacted the lives of hundreds of thousands of disadvantaged children, women, and youth across five states in India.

Working in collaboration with eminent NGOs, LTPCT aims to enhance scalability, achieve the organization's sustainability goals, and implement learnings to augment its reach and impact. The Trust ensures that the maximum number of disadvantaged individuals in its project areas gain access to education, water, livelihood and skill development, and healthcare.

With a focus on nation-building and making a meaningful difference, LTPCT continues to strive towards creating a better and more equitable society. By embracing innovation and technology, the Trust ensures effective resource utilization and empowers communities through the development of social infrastructure. LTPCT also places great emphasis on gender equality, actively promoting women's participation in various initiatives.

Working in collaboration with eminent NGOs, LTPCT aims to enhance scalability, achieve the organization's sustainability goals, and implement learnings to augment its reach and impact. The Trust ensures that the maximum number of disadvantaged individuals in its project areas gain access to education, water, livelihood and skill development, and healthcare.

## OUR VISION



To bring about sustainable development in society through well-directed activities in the fields of skill building, water management, education, health, and holistic child development.



## OUR MISSION

Provide access to quality education for underprivileged children

Create opportunities in skill building for unemployed youth & women

Provide access to healthcare through awareness building and necessary treatment

Create irrigated land, appropriate use of water and improved sanitation

## OUR VALUES



LTPCT thrives on the tenets and value system of RARE

**RESPONSIBILITY**  
**RESPECT**

**ACCESSIBILITY**  
**EXCELLENCE**

We believe in responsibly building a conducive ecosystem to provide access to quality Education, Water, Livelihood & Skill Development and Healthcare for the communities and tribal population to sustain and progress.

In the process, LTPCT aims to build a culture of respect and excellence to inspire and lead their people to create meaningful impact and drive positive change.

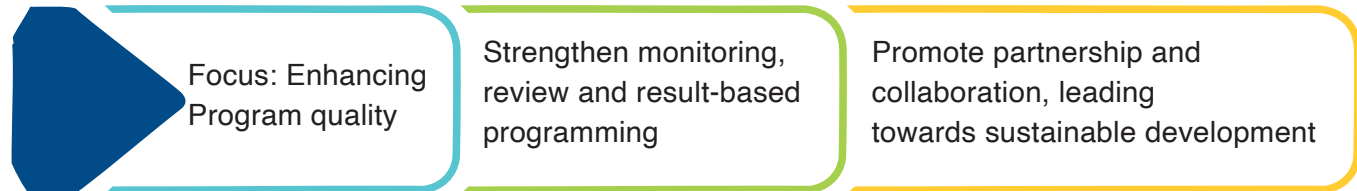


## OUR AREAS OF INTERVENTION

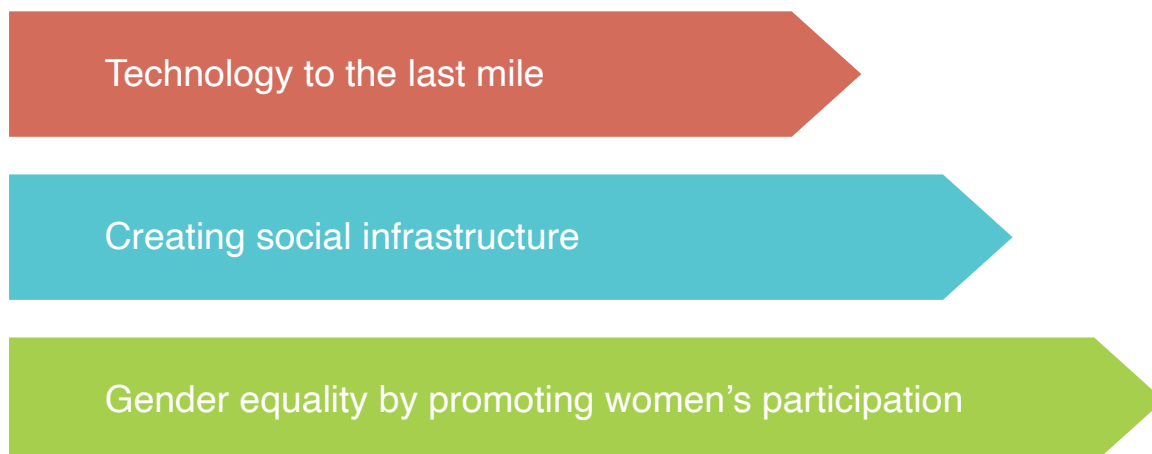
Over the years, LTPCT has aimed to bring about an active change in the communities through its focused interventions in the four basic but important areas of Education, Water, Livelihood & Skill Development, and Health. These areas of interventions are guided by principles of equality, sustainability and collaboration for better impact and outreach.



## GUIDING PRINCIPLES



## CROSS CUTTING THEMES





# EDUCATION THAT MATTERS



**Vidyaa's education program** focuses on the holistic development of students by sparking curiosity and creativity in both students and teachers. We provide access to quality education to enhance learning outcomes.

Vidyaa is committed to democratizing quality education and bridging socio-economic gaps. It aims to create an equitable future where every child can thrive and contribute to society. Our strategy focuses on educational empowerment and societal transformation, believing that investing in education is investing in the future. LTPCT is dedicated to providing access to high-quality education, enhancing learning outcomes, promoting scientific inquiry, nurturing creativity, and fostering innovation.

Recognizing diverse regional challenges, LTPCT crafts tailored interventions to address functional literacy and digital disparity, aiming to uplift communities and ensure better opportunities for the underprivileged.

LTPCT has collaborated with various partners, including Agastya for Science intervention, Pratham Education Foundation & Orion Education Society for the Second Chance Program, Diganta Swaraj Foundation for the Digital Skills Program, CHETNA Foundation and Vipla Foundation for Early Childhood Care and Education, and Remedial and Transitional intervention.

Additionally, LTPCT collaborates with individual subject matter experts in each area of intervention. Together, LTPCT implements Vidya Program across diverse locations, tailoring it to the specific needs of each geographical area.

---

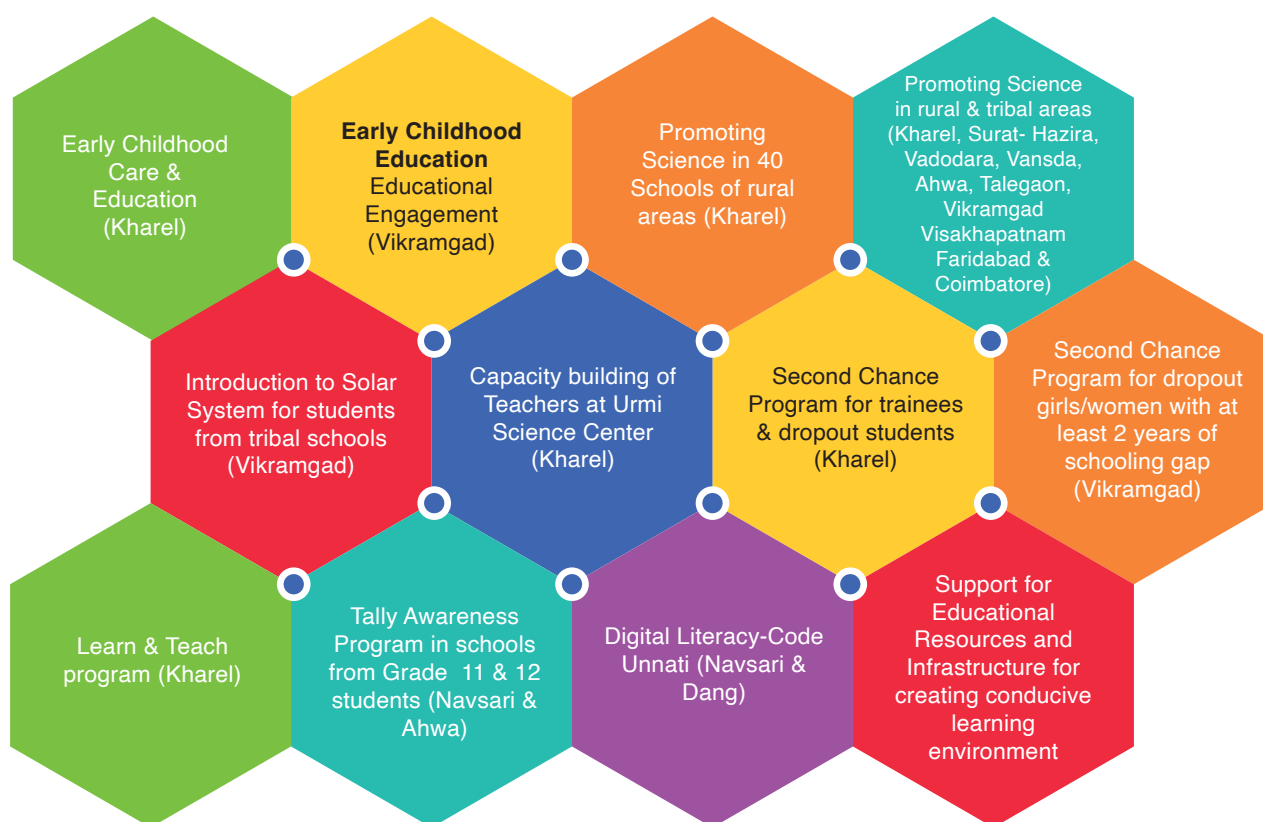
**LTPCT addresses regional, cultural, and community-specific challenges through tailored interventions focused on functional literacy and digital disparity. The initiatives aim to uplift communities by enhancing learning outcomes, improving classroom attendance, increasing digital inclusion, and fostering positive pedagogical changes through capacity building of teachers and Anganwadi workers. We also emphasize technology exposure for students and educators, heightened community involvement in child development, and supporting school dropouts to successfully complete class 10.**

## STRATEGIC APPROACH



LTPCT is committed to bridging educational gaps and uplifting communities through strategic initiatives. By conducting surveys, consulting experts, and engaging grassroots stakeholders, we support educational institutions in providing conducive learning environments. Our efforts empower adolescents, youth, schools, and Anganwadi centers, focusing on early child care, primary and upper primary education, teacher training, and nurturing scientific and digital literacy for holistic development.

### INTERVENTIONS WITH LIFE-CYCLE APPROACH



## EARLY CHILDHOOD CARE & EDUCATION PROGRAM (KHAREL, NAVSARI, GUJARAT) **PRE-PRIMARY FROM 3-6 YEARS**



### GOAL

Ensuring development of motor, socio-emotional, linguistic and cognitive skills of 3 - 6 years old children and prepare them for schooling and learning. This involves providing capacity building and hand-holding support to Anganwadi workers and helpers. It also aims to raise awareness among parents about effective parenting practices.



AIM	TARGET AREA	COLLABORATION
The central aim of the program is to empower young children, from marginalized backgrounds, by ensuring their access to secure and nurturing learning environments that support holistic development.	14 villages of Gandevi Block, Navsari, Gujarat, encompassing 41 Anganwadi centers.	LTPCT in collaboration with CHETNA Foundation and with support from Naik Charitable Trust is working on ECCE project in convergence with the Integrated Child Development Scheme (ICDS), health and education departments of the government of India. Early Child Care Education (ECCE) project was officially launched on 25th February 2023 at Endhal Primary School in Navsari.

## TOTAL BENEFICIARIES

## NAVSARI

CHILDREN (DIRECT)

767

INDIRECT

Anganwadi Workers (AWWs), Helpers, Accredited Social Health Activists (ASHAs), parents, mothers of the children, community members, Panchayat members, and others involved in the project.

## BASELINE SURVEY IN GANDEVI (OCT-NOV 2022)

CONDUCTED BY LTPCT &amp; CHETNA FOUNDATION

VILLAGE PROFILE SURVEY ANALYSIS-DEMOGRAPHIC OVERVIEW

AWCs COVERING

767

CHILDREN (0-6 YEARS OLD)

1,404

**GENDER  
IMBALANCE  
AND LOW  
ATTENDANCE**

AWC  
ATTENDANCE  
(3-5 YEARS)  
**60%**

**Reasons for low attendance in (3-5 years)**

Migration, Preference for private schools

**Reasons for low attendance in Older Children (5+ years)**

Complexities with school eligibility, Use of AWCs after school hours and Children attending private schools

### PRIMARY OBJECTIVES OF SURVEY



Assess Developmental Milestones of children aged 3-6 in Anganwadi Centers. Evaluate Nutritional Status of children in 41 AWCs and Obtain Parents' Perspectives on AWC services.

**Approach** ➡ Systematic data collection using various tools and techniques

### PROBLEM & SOLUTION

Key interventions designed to address the survey results highlighting inadequate learning outcomes at the 9th standard, inadequate development of language, social, cognitive, and motor skills, and the negative impact of parental behaviors on children's well-being and education include ➡

Engagement  
with students  
from early  
educational  
stages

Activities and  
interventions  
to enhance  
development  
al skills

Awareness  
programs  
for parents

The target populations include one AWC in a migrant area and 40 AWCs in tribal communities. Challenges were met with inclusive and supportive initiatives designed to their unique needs.



## OVERVIEW

The Early Childhood Care and Education (ECCE) initiative focuses on establishing strong connections with mothers as primary educators, training Anganwadi workers to engage parents, and involving community elders and Panchayat Samiti members. Data analytics are incorporated to guide evidence-based decision-making, while interactive games designed to improve numeracy and literacy skills add an innovative dimension to the project, making learning a more engaging and enjoyable experience. To ensure relevance and effectiveness, context-specific teaching materials have been developed, tailored to the unique needs of the community, thus fostering a holistic and inclusive approach to ECCE.

The Vidyaa-ECCE project focuses on enhancing early childhood development, care, and pre-primary education within Anganwadi centers, specifically in the Gandeви block. Key components include educational and nutritional interventions, motor skills development, socio-emotional growth, pre-reading and writing skills, and language skill improvement. Activities include renovating centers, community engagement events, health camps, menstrual management lectures, and establishing kitchen gardens. This supportive ecosystem aligns with regional strategies to prepare children for a seamless transition to primary school, empowering them for future success.

### COMMUNITY PARTICIPATION

➔ 428 MEMBERS PARTICIPATED IN GRAM BAITHAK.

### HEALTH INITIATIVES

➔ HEALTH CAMPS WERE CONDUCTED ACROSS ALL 41 ANGANWADI CENTRES (AWCS) AND 8 CLUSTERS IN GANDEVI BLOCK, WITH SUPPORT FROM NIRALI HOSPITAL NAVSARI AND VIDYAA ECCE TEAM.

### TRAINING & DEVELOPMENT

➔ 41 AWWs COMPLETED A FIVE-DAY CLASSROOM TRAINING PROGRAM. THE TRAINING INCLUDED DEMONSTRATIONS OF ECCE ACTIVITIES BY VIDYAA ECCE TEAM.

### SUSTAINABLE LIVING

➔ 41 KITCHEN GARDENS DEVELOPED IN 19 AWCS & ONE CHILDREN'S HOME.

## EDUCATIONAL ENGAGEMENT PROGRAM (VIKRAMGAD)

### (EARLY CHILDHOOD EDUCATION - TRANSITIONAL & REMEDIAL)



### TARGET AREA

Villages Vasuri, Utavali, Alonde, Khoste, and Moh are within Alonde area of Vikramgad Block, Palghar district, Maharashtra.

### COLLABORATION

LTPCT, in partnership with Vipra Foundation, is actively engaged in an Educational Engagement Program at Vikramgad. The initiative started in July 2022.



## OVERVIEW

Educational Engagement Program targets the transition from Anganwadi to formal schooling, ensuring a smooth educational journey for young children. It encompasses various key components, beginning at the grassroots level with an emphasis on Anganwadi centers, which are pivotal hubs for early childhood education in communities

### TRAINING FOR ANGANWADI TEACHERS

Equipping 34 Anganwadi Sevikas with essential skills in early childhood development, health, nutrition, and school readiness through a comprehensive five-day program.

### TRANSITIONAL LEARNING IN SCHOOLS

Collaborating with the Vipla Foundation to implement transitional learning in 24 schools in Utavali (Vikramgad), focusing on intensive training for teachers, curriculum development for the 6-8 year age group based on NEP 2020 recommendations, training and mentoring of Grade 1 and Grade 2 teachers, identification and support for students falling behind, improvement of teaching quality, engagement in co-curricular activities, and assessment of children's progress.

### PATANG REMEDIAL CENTERS

Establishing centers in specific schools to provide personalized academic support, to students facing academic challenges especially in subjects like math and language. These centers act as a lifeline for students needing extra support to succeed academically.

### EDUCATIONAL RESOURCES

Distribution of curated educational materials for Anganwadis, Transitional classrooms, and Remedial classrooms. Community engagement through village outreach events, addressing early childhood topics and promoting collaboration and support within the community.

### HOLISTIC DEVELOPMENT

Introduction of extracurricular activities such as chess training sessions for Zilla Parishad teachers and schools enriches educational experiences and promote values such as sportsmanship and critical thinking.

## A RECENT THIRD-PARTY SURVEY CONDUCTED IN ALONDE VILLAGE PROVIDED INSIGHTS INTO SEVERAL ASPECTS

**Coverage** ➡ 34 Anganwadi centers and 24 schools in Alonde Beat.

**Findings** ➡ Enrolment data, infrastructure details, and teacher information were assessed.

**Problem** ➡ Highlighted the significant issue of migration in targeted intervention areas.

**Solution** ➡ Integrated education intervention in Vikramgad.

## TOTAL BENEFICIARIES

## VIKRAMGAD

PERSONALIZED ACADEMIC SUPPORT  
**316**

TRANSITIONAL CLASSROOMS  
**24**

REMEDIAL CLASSROOMS  
**24**

REMEDIAL CENTERS  
**6**

TOTAL ANGANWADIS  
**34**



# PROMOTING SCIENCE IN 40 SCHOOLS OF RURAL AREAS

## SCIENCE (KHAREL) PRIMARY SCHOOLS FROM 6TH TO 10TH STD



### AIM

To spark curiosity and foster a creative spirit in students and teachers, the aim is to generate interest in science and alleviate the apprehension associated with it through hands-on exposure to curriculum-based models, activity-based learning, and the implementation of new pedagogical approaches.

### URMI SCIENCE CENTER



#### Location

Kharel, serving Urban & Semi-Urban Areas

#### Collaboration

Agastya International Foundation

#### Model

Hub-and-Spoke



Established in 2010, Urmi Science Center addresses the scarcity of science facilities in public schools, particularly in rural areas. Located in urban and semi-urban areas, it serves as a pivotal hub for interactive science learning. The center supports nearby schools with science models and encourages students to conduct low-cost experiments. Beyond benefiting students and teachers, the center attracts a diverse audience, offering an immersive educational experience filled with wonder and excitement.

The center prioritizes 40 Vidya schools and extends its invitation to other schools in need of science education. Its Science Program features over 100 interactive experiments and models covering Chemistry, Physics, Biology, Astronomy, Ecology, and Math. New initiatives include labs for the Young Instructor Leadership Program, an Innovation Hub, Jumbo Model, and Teacher Training Program.

Every day, the center hosts over 60 children for a free 4-hour science exposure, gradually expanding to include other subjects and engaging with 70–80% of the 40 schools it serves. Recently, the center organized an Exposure Visit for MSL1 & MSL2 teachers from Vikramgad, Maharashtra, involving educators from 42 schools.

**Innovation Hub (IH):** Stimulates experiential learning, instills a design thinking mindset, and improves problem-solving skills among students in one school. In FY 22-23, 502 students were covered under IH.

### URMI SCIENCE CENTER

**Young Instructor Leadership (YIL) Program:** YIL program peer-to-peer learning by training students with leadership potential to mentor peers. This initiative spans across 16 schools, benefiting 598 students, aiming to cultivate leadership skills and self-esteem.

### TOTAL BENEFICIARIES

### KHAREL

SCHOOLS COVERED

**40**

BENEFITING STUDENTS

**12,379**

TEACHERS INVOLVED

**40**

## YOUNG SCIENCE LEADERS (YSL)

B

AIM	OBJECTIVE	COLLABORATION
Increase access to practical science education and bridge gaps in learning opportunities.	Enhance students' curiosity and creativity through engaging in science projects and model making, fostering the 4Cs: Curiosity, Creativity, Confidence, and Caring.	L&T Public Charitable Trust and Naik Charitable Trust, in collaboration with Agastya International Foundation and district education authorities launched YSL Program which is an annual competition organized by LTPCT for students at Kharel.



### OVERVIEW

YSL has gone beyond traditional model-making, guiding economically disadvantaged students from government schools through research and innovation processes. Mentors from L&T's Hazira manufacturing complex inspire and support students, fostering hands-on learning, creativity, critical thinking, and problem-solving skills. Projects are selected based on students' interests, encouraging exploration and innovation beyond traditional model making, with a focus on Teaching-Learning Material (TLM) competition. This approach enhances students' understanding of scientific concepts and develops valuable skills for their future. It also eliminates fear, promoting a confident learning environment. The program aims to spark curiosity, foster creativity, and nurture leadership skills among participants.

### TOTAL BENEFICIARIES

KHAREL

TOTAL  
SCHOOLS

130

TOTAL  
PARTICIPANTS

218

SCIENCE ON WHEELS PROGRAM  
SCHOOLS STUDENTS

29

2648

## YOUNG INSTRUCTOR LEADERSHIP (YIL)

C

### OVERVIEW

YIL, launched on June 9, 2022, in 16 primary schools, serves 500 students in grades 6-8. It focuses on developing leadership, problem-solving, life skills, communication, and age-appropriate computer proficiency. In its third year, students engage in practical learning through visits to banks, police stations, factories, and hospitals. To facilitate experiential learning, Mobile Science Lab (MSL) units are deployed to distant schools, while the Urmi Science Center, situated near other schools, enriches the learning experience.

### OBJECTIVE

To transform the conventional teacher-student dynamic by fostering peer-to-peer learning and leadership qualities among student.

### TOTAL BENEFICIARIES → SCIENCE FAIR

KHAREL

SCHOOLS

3

MODELS DEMONSTRATED

30

PARTICIPANTS

50

Additionally, 5 schools visited the fair, involving 488 students.

INNOVATION HUB (IH)



OVERVIEW

The Innovation Hub, launched in 2022, is a specialized program for 9th-grade students in schools located around 5 km apart. The program lasts for one year, consisting of 16 sessions held every two weeks, each lasting 2 hours. These sessions cover different aspects of Design Thinking such as problem identification, empathy, ideation, design, and prototyping. Targeting 9th-grade students ensures a focused approach to cultivating an innovative mindset. Science acts as the basis for innovation, guiding students through brainstorming to prototyping solutions. Pre- and post-assessments are conducted to measure students' development in innovative thinking and problem-solving skills.

**OBJECTIVE** To promote innovation through Design Thinking.

TOTAL BENEFICIARIES KHAREL

SCHOOLS PARTICIPATED	TOTAL PARTICIPANTS	TOTAL STUDENTS	MODELS CREATED
2	80	636	40

Additionally, 7 other schools visited the Innovation Hub fair, indicating a broader impact on a larger student population.

INNOVATION HUB (IH)



OVERVIEW

LTPCT plays a crucial role in supporting the scientific promotion initiatives of YUVIKA (ISRO) in science. Through its commitment to education and outreach, the trust encourages and facilitates participation in scientific programs. This initiative aims to foster and cultivate young minds' interest in science.

TOTAL BENEFICIARIES NAVSARI

70 STUDENTS REGISTERED FOR YUVA'S SCIENTIFIC PROGRAMS, WITH ONE SELECTED FOR ISRO'S PRESTIGIOUS CAMP.

PROMOTING SCIENCE IN RURAL AREAS IN COLLABORATION WITH AGASTYA INTERNATIONAL FOUNDATION (KHAREL, SURAT- HAZIRA, VADODARA, VANSDA, AHWA, TALEGAON, VIKRAMGAD, VISAKHAPATNAM, FARIDABAD AND COIMBATORE)



LTPCT has collaborated with Agastya to implement science interventions across multiple locations in India through the outreach initiative, Science on Wheels (Mobile Science Lab).



Equipped with scientific tools and resources, the lab facilitates hands-on learning. Experienced instructors visit government schools, reaching underserved children and teachers, offering face-to-face interactions and valuable experiences. The initiative includes activities such as Science Fairs, Camps, Teacher Training, Young Instructor Training, Community Engagement, and Project-Based Learning to foster a dynamic educational environment.

## TOTAL BENEFICIARIES

## ACROSS MULTIPLE LOCATIONS

SCHOOLS  
COVERED

**14**

TOTAL  
CHILDREN

**3,539**

So far, 255 schools covered,  
benefiting 47,688 students.

## PROMOTING SCIENCE IN TRIBAL AREAS

(AHWA ,VANSDA AND VIKRAMGAD)



Mobile Science Labs have expanded to 20 schools in Ahwa, 20 schools in Vansda (Dist. Navsari), and 14 schools in Vikramgad (Dist. Palghar). This initiative addresses challenges like limited resources and infrastructure in these areas. By introducing interactive science education, the Program enhances students' access to practical learning and promotes scientific literacy, supporting national and state goals for a knowledge-based society and quality education.

## CAPACITY BUILDING OF TEACHERS OF 40 SCHOOLS ➔

### TEACHER'S TRAINING



## GOAL

To promote hands-on experimental learning and to bring in transformation from the traditional model of "Teacher Teaching Children" to a more interactive approach of "Teacher Facilitating Children."

## OVERVIEW

The Subject-Specific Teachers Training Programs provide tailored training for science, mathematics, and English teachers, focusing on deep subject understanding and innovative teaching methods. The science program emphasizes practical application and creative thinking, while mathematics training includes modern techniques, particularly beneficial for tribal students. The English program aims to enhance language proficiency and teaching skills. Make-Your-Own-Lab (MYOL) kits are provided for hands-on scientific experiments, ensuring accessibility and cost-effectiveness. Transitioning to virtual learning during the pandemic, the program developed interactive virtual training and diverse teaching materials, including videos, an e-book, and online refresher courses, contributing to comprehensive teacher development.



42 teachers from 40 schools underwent a 2-day Hands-On training at Urmi Science Center.



33 teachers from 33 schools participated in the Young Instructor Leader Program training.



35 teachers from 35 schools attended a 4-day 'Make Your Own Lab' training at Agastya's Kuppam Campus.



The Block Resource Center provided on-demand training to 175 teachers.



Exposure programs to Surat and Vikramgad Mobile Science Vans involved 43 and 50 teachers, respectively, in 1-day training sessions at Urmi Science Center.



57 primary school teachers, and 52 secondary school teachers of Science Van School from Dang, received training.

## TOTAL BENEFICIARIES

## FROM MULTIPLE LOCATIONS

SCHOOLS COVERED

**450**

TEACHERS INVOLVED

**450**

## PLANETARIUM EDUCATION PROGRAM (VIKRAMGAD)



LTPCT, in collaboration with SQ Planetarium, launched an educational initiative in Vikramgad's tribal region focused on the solar system. The program targets underprivileged students, addressing accessibility and awareness challenges. It offers tailored astronomy education integrated with entertainment for different grade groups. Strategies include assessing students' knowledge levels, conducting customized shows, direct student engagement, and assessments. The mobile planetarium initiative tackles infrastructure, language, and transportation barriers. Effective practices involve student participation, teacher collaboration, and ensuring accessibility. The Program has positively impacted student interest and awareness of space science.



Engaged 6202 students (3262 girls and 2940 boys) and 80+ teachers and community members in Vikramgad with interactive planetarium shows.



Provided virtual journeys through the cosmos to 14 zilla parishad and Ashram Schools in Vikramgad, offering basic knowledge of astronomy.



Covered diverse space topics including space shuttles, the ISS, space telescopes, and celestial objects to impart basics of space science.



Integrated advanced curriculum for higher grades, exploring complex subjects in alignment with students' syllabus.



Upcoming tailored content for the next year will include Chandrayaan landing in 3D, Earth's origin, moon phases, etc.



Introduction of Augmented Reality (AR) to enhance learning by overlaying digital information, offering an immersive experience.

## LEARN & TEACH (L&T) PROJECT FOR 40 VIDYAA SCHOOLS

### OVERVIEW

Engaging retired teachers, particularly those recognized for their educational excellence, as resource persons is crucial for enhancing teaching methods and practices. Their mentorship and training empower headmasters and teachers, improving learning outcomes for second-chance students in challenging subjects like Science, Math, and English, ultimately preparing them to prepare them for 10th exams. Over the span of a year, the project comprised eight 90-minute sessions guided by resource teachers from Surat.

### GOAL

Improve learning outcomes for 40 Vidya Schools, this involves engaging retired and proficient teachers from Surat, particularly National/State level awardees recognized for their educational contributions.

### TARGET AREA

Second Chance students and teachers in Kharel

### TOTAL BENEFICIARIES

### KHAREL

VIDYAA SCHOOLS PARTICIPATED

**36**

TOTAL TEACHERS

**36**

Sessions were conducted at Urmi Science Center as part of a Teachers Training program. Additionally, they participated in a session at the Young Science Leader Competition, all aimed at improving learning outcomes for students encountering academic difficulties.

## SECOND CHANCE PROGRAM FOR TRAINEES /STUDENTS OF ANIL NAIK TECHNICAL TRAINING CENTER (KHAREL)

### TRAINEES /STUDENTS 16YR+ DROPOUTS

### OVERVIEW

LTPCT's Second Chance Program aims to fulfill the demand for secondary school certificates in industries by focusing on students enrolled in trade courses or graduates from ANTTC. The program has two main objectives: addressing low learning levels leading to high dropout rates and facilitating re-entry into the traditional school system after dropping out. The initiative seeks to integrate the Second Chance program with vocational courses at ANTTC, which provides vocational training to school dropouts and unemployed youth, enhancing their employability. The National Institute of Open Schooling (NIOS) was chosen to facilitate Grade 10 exams.

Alongside academic completion, LTPCT also endeavors to train students in soft skills such as presentation ability and conversational skills. The objectives include preparing students of Anil Naik Technical Training Center for NIOS and preparing trainees to appear for Gujarat Board exams who have failed in less than three subjects to obtain secondary schooling certificates and improving their soft skills for personal and professional growth. The approach consists of two models: the Main Course under NIOS, focusing on the primary academic curriculum, and the Foundation Course, which supplements NIOS with additional support in subjects like English, Maths, and Life Skills, thereby enhancing students' success in obtaining their secondary education certificates.



## GOAL

To provide opportunities to school dropout trainees of ANTTC, Kharel and dropout learners from the community around for inclusive learning and flexible access to quality school education and skill development.

### TARGET AREA

School dropouts aged 16 years and above are eligible, regardless of the duration since they stopped attending school or the grade in which they dropped out.

### TOTAL BENEFICIARIES

### KHAREL

### NIOS BOARD AND GUJARAT STATE BOARD (10TH-GRADE EXAMINATION) STUDENTS ENROLLED

40

## SECOND CHANCE PROGRAM (VIKRAMGAD)

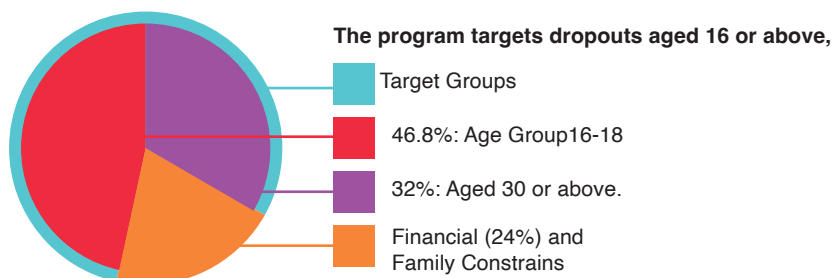
### TRAINEES /STUDENTS 16YR+ DROPOUTS

### AIM

To provide school dropouts young girls and women, another chance at completing their secondary education. It aims to enable them to successfully pass the Class 10 Maharashtra State Board examinations. The model of implementation addresses the educational barriers of accessibility of the learners. The program is meant to provide an impetus for tribal girls and women to explore opportunities for higher education and livelihood.

### SITUATION ANALYSIS

The analysis of dropout grades and reasons highlighted systemic and social barriers, particularly affecting girls and women, resulting in a significant number of dropouts occurring at the 8th grade level. Talwada cluster in the northwestern part of Vikramgad was identified as having a high concentration of dropouts.



In response to the need to address dropout rates among girls and women, LTPCT collaborated with Pratham to launch the Second Chance program in FY 2022-23. The program team engaged local stakeholders and conducted multiple home visits to inform dropouts about the program, successfully mobilizing 117 potential learners and establishing five clusters.



## TOTAL BENEFICIARIES

## VIKRAMGAD

TOTAL STUDENTS **72**

They all had joined for job security (They are supposed to be at least 10th pass).

**13** Anganwadi Sevikas**3** Anganwadi Helpers**8** ASHA workers**4** Krishi Sakhis**1** Community Resource Person

## PROGRAM PHASES

**1 FOUNDATION COURSE (FC)**

Teaches basics for secondary school, covering English, Mathematics, Marathi, Hindi, Science, Social Science, and Life Skills.

**2 MAIN COURSE (MC)**

Focuses on Grade 10 board exam prep, using interactive methods like activity-based learning, group work, and self-learning through homework. Includes co-scholastic modules on Life Skills, Career Counseling, Health, and Menstrual Hygiene.

**3 ADAPTATION TO POST-COVID ENVIRONMENT**

Hybrid teaching mode with in-person community classes and online resources for academic and co-scholastic modules, facilitated by experts and the Pradigi App.

**2022-23 BOARD EXAMINATION (10TH GRADE)**

TOTAL PARTICIPANTS  
**117**

MARRIED

**48**

UNMARRIED

**24**

PASSED STUDENTS  
**65**

Analysis of Mock Tests 1 and 2 indicated improved performance in the 51%-75% range across subjects.

Faculty provided additional support, identified areas for improvement, and discussed strategies with learners.

## UNIQUE SESSIONS

In response to the need to address dropout rates among girls and women, LTPCT collaborated with Pratham to launch the Second Chance program in FY 2022-23. The program team engaged local stakeholders and conducted multiple home visits to inform dropouts about the program, successfully mobilizing 117 potential learners and establishing five clusters.

The Second Chance Program in Kharel is designed to provide inclusive learning and flexible access to quality school education and skill development for school dropout trainees of Anil Naik Technical Training Center and other dropout learners from the surrounding community. Eligibility is open to school dropouts aged 16 years and above, irrespective of the duration since they left school or the grade at which they discontinued their education.

On the other hand, the Second Chance Program in Vikramgad focuses on offering a renewed opportunity for school dropout young girls and women to complete their secondary education, emphasizing accessibility barriers in the implementation model. It specifically aims to empower tribal girls and women, motivating them to pursue higher education and livelihood options after successfully passing the Class 10 board examinations.

## TALLY AWARENESS PROGRAM IN SCHOOLS

(NAVSARI, AHWA)

OBJECTIVE	TARGET AREA
To enhance the skill sets of students at the right age required for a successful career in industries/corporates.	11th and 12th grade students from 20 schools in the Gandevi block, 5 schools in the Vansda block (Navsari District), and 5 schools in the Ahwa block (Dang District).

### OVERVIEW

This program was introduced in FY21-22 to complement formal education with vocational and skill-related training, recognizing the importance of such training for enhancing employability. This year, in response to requests from 10 high schools in Vansda and Ahwa, LTPCT expanded its Tally Awareness Program in these regions, which is financially supported by L&T Technology Services. Collaborating with schools that already had computer labs, either owned by the school or provided by LTPCT through its School Digital Literacy program (supported by SAP India & operated by Pratham Infotech Foundation), the Tally Awareness Program aims to equip students with essential skills for the evolving job market.

### TOTAL BENEFICIARIES

### KHAREL

**STUDENTS  
COMPLETED COURSE  
(11TH & 12TH STD)**

NAVSARI  
**695**

AHWA  
**162**

## DIGITAL LITERACY-CODE UNNATI (NAVSARI, DANG)



SAP, L&T Public Charitable Trust and Pratham InfoTech Foundation are jointly running Code Unnati Program to promote digital literacy with 255 schools across Navsari and Dang district. Pratham Infotech provides Digital Literacy training to students from grade 1 - 12. Also organised Digital Mela were organised in all schools of Code Unnati where students participated and presented their Digital Models. Out of 255, 11 schools were chosen for the District Level School Mela.

## SUPPORT FOR EDUCATIONAL RESOURCES AND INFRASTRUCTURE DEVELOPMENT (NAVSARI, DANG, VIKRAMGAD)



### GOAL

To provide basic needs to schools for conducive environment with infrastructural support



1

### SUPPORT FOR EDUCATIONAL RESOURCES

#### **DIGITIZATION OF VIDYAA SCHOOLS**

The digitization process at Vidya Schools involves implementing smart classrooms with Interactive Flat Panel (IFP) panels and OPS for interactive and visual learning. This includes animating difficult concepts, creating digital resources, and using a centralized attendance management system with facial and smart card-based tracking. Benefits include live monitoring, quick recognition, and reduced paperwork, enhancing efficiency in tracking attendance for both students and staff. To date, an Interactive Flat Panel has been set up in one school, Attendance Machines have been deployed in four schools, 1 KVA Online UPS has been positioned in all four schools, 1600 Smartcards have been distributed among the four schools, and an 8 Port Switch + Rack has been implemented in each of the four schools.

#### TOTAL BENEFICIARIES

KHAREL

CHILDREN

**1598**

SCHOOLS

**4**

#### **EDUCATIONAL RESOURCES SUPPORT (CHONDHA)**

The Educational Resources initiative at Dr. Manibhai Desai School in Chondha benefitted 269 students by enhancing co-curricular activities, expanding the library with over 500 books, and providing remedial literacy and math classes using Khan Academy for Grade 9. Digital literacy was improved with 10 new desktops and offline platforms like Kolibri. Digital learning started for Grade 11 science and will extend to Grade 9.

An open-access computer room became popular, and communicative English classes for Grades 9 and 11, along with expert-led sessions for Grades 10 and 12, were successful. Budget redirection enabled the purchase of science and math kits for Grade 9, and weekly hands-on science classes utilized a mobile science van. The sports program was enhanced with new equipment storage and an anticipated table tennis table.

## DIGITAL SKILLS LAB INITIATIVE (VIKRAMGAD)

### GOALS

Reduce digital disparity by providing digital access and quality training to students, teachers, and the community at the last mile to build a digitally inclusive society. Promote digital inclusion and e-learning.

### OVERVIEW

LTPCT, in collaboration with Diganta Swaraj Foundation (DSF), has launched Digital Skill Labs to bridge the digital divide in remote areas, focusing on Vikramgad in Palghar district, Maharashtra. This initiative provides digital access and training to students, teachers, and the community, aiming to reduce digital disparity and the gender gap in education. The project involves setting up computer labs, training local youth as instructors, and engaging the community.

The curriculum includes digital literacy, Microsoft Office Suite, internet research, and digital creativity using innovative methods like gamified learning and virtual reality. Despite challenges such as lab setup, maintenance, low student learning levels, and limited class availability, proactive planning and collaboration ensure effective implementation and sustainability.

## TOTAL BENEFICIARIES

## VIKRAMGAD

### ESTABLISHED COMPUTER LABS

15

### TRIBAL STUDENTS

6,315



## SUPPORT FOR INFRASTRUCTURE DEVELOPMENT

### GIRLS' HOSTEL

LTPCT has launched a major project in Chondha village, Vansda block, Navsari District, constructing the 'Rajmata Jijabai Kanya Chhatralaya' girls' hostel, a Gram Panchayat, and a Community Hall in collaboration with L&T Hazira and BAIF SLD. The hostel, inaugurated on February 16, 2023, by Shri Kunwarjibhai Halapati, can accommodate 120 students and aims to support girls from marginalized tribal communities in Navsari and Dang districts by providing a conducive living environment for education and career development.

The initiative addresses critical social needs, including quality education for the tribal community, gender gap reduction, and creating a supportive learning environment. Additionally, the new Gram Panchayat and Community Hall meet the social, economic, and cultural needs of the local people, with plans to organize meetings and training sessions for Gram Panchayat members on Panchayat Raj.

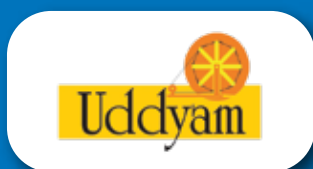
### RENOVATION OF HALPATI BOY'S HOSTEL

Gujarat region, specifically the Halpati tribal belt, grapples with challenges such as poverty and migration. Halpati tribe are marginal cultivators and landless agricultural labourers. Their Families frequently relocate, causing significant hardships for students and often resulting in a high dropout rate. LTPCT refurbished the Halpati Kumar Chhatralay in Kharel aiming to address these issues and provide a better educational environment for the local children. Currently, 30 children have benefited from this initiative.





# ACCESS TO EQUITABLE LIVELIHOOD



## PRIMARY EFFORTS WITHIN THIS INTERVENTION ENCOMPASS ➡

- a. Natural Resource Management
- b. Farm Based  
Agricultural Development  
Livestock Management
- c. Non-Farm Based

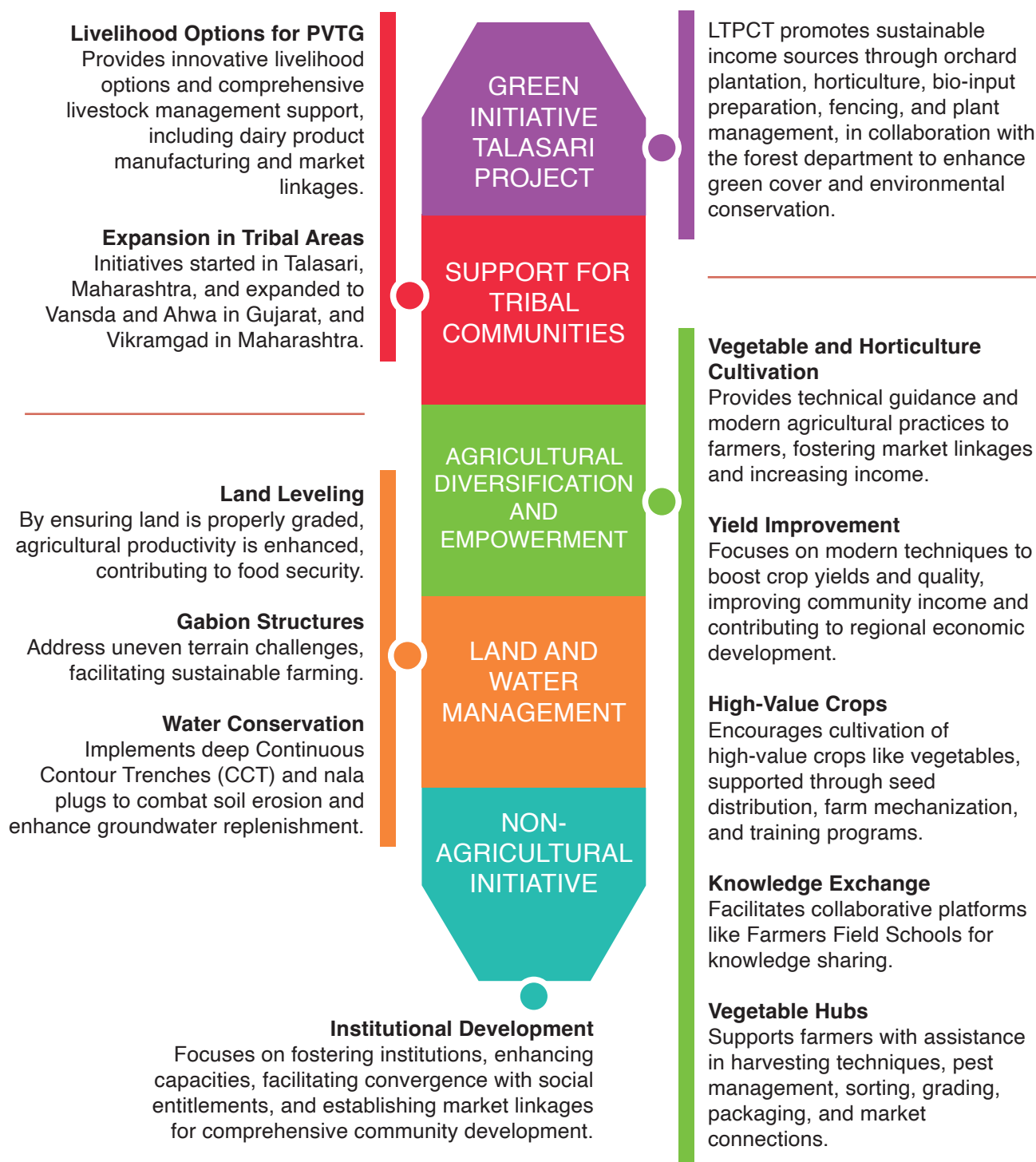
Agriculture is crucial to India's economy, contributing 15-20% to the GDP, yet challenges persist, especially for tribal and migrant populations. Despite abundant agricultural land, 60-70% of the population works in farming, often on small, fragmented plots of less than 2 hectares, leading to limited access to resources and technology. Around 10-15% of rural Indians have no land, depending on wage labor and facing higher poverty risks. Seasonal migration for agricultural work affects labor dynamics and output. India's tribal communities, with unique cultural and agricultural practices, require inclusion in sustainable development. Agriculture is vital for 65-70% of the rural population's livelihoods.

LTPCT focuses on empowering marginalized communities, emphasizing livelihoods and skill development to help farmers overcome challenges and enhance their socio-economic status. The strategy includes raising awareness, community mobilization, institution building, capacity enhancement, and infrastructure development, particularly in water management and soil conservation. Collaboration with stakeholders, including private enterprises, is essential for expanding export-import opportunities.

LTPCT focuses on engaging with rural and tribal communities in India, where agriculture and land ownership are vital for livelihoods. Farmers in these areas often own small plots and face challenges such as limited irrigation facilities, leading to difficulties in cultivating multiple crops year-round. This results in seasonal migration for alternative income. Water scarcity and financial constraints hinder the adoption of irrigation technologies, making these communities dependent on monsoon rains and highlighting their vulnerability. Despite efforts to provide amenities and promote modern farming techniques, there is still a lack of awareness and adoption of innovative agricultural practices.

To address water conservation, LTPCT employs various strategies including building check dams and promoting diverse water harvesting structures like solar-based lift irrigation, flex-net drip irrigation, rain pipes, and farm ponds. These methods are essential for harnessing and preserving water resources, particularly in drought-prone areas reliant on rainfall.

## LTPCT FOCUSES ON VARIOUS INITIATIVES TO OPTIMIZE AGRICULTURAL PRODUCTIVITY AND PROMOTE SUSTAINABLE PRACTICES. THESE EFFORTS INCLUDE ➡



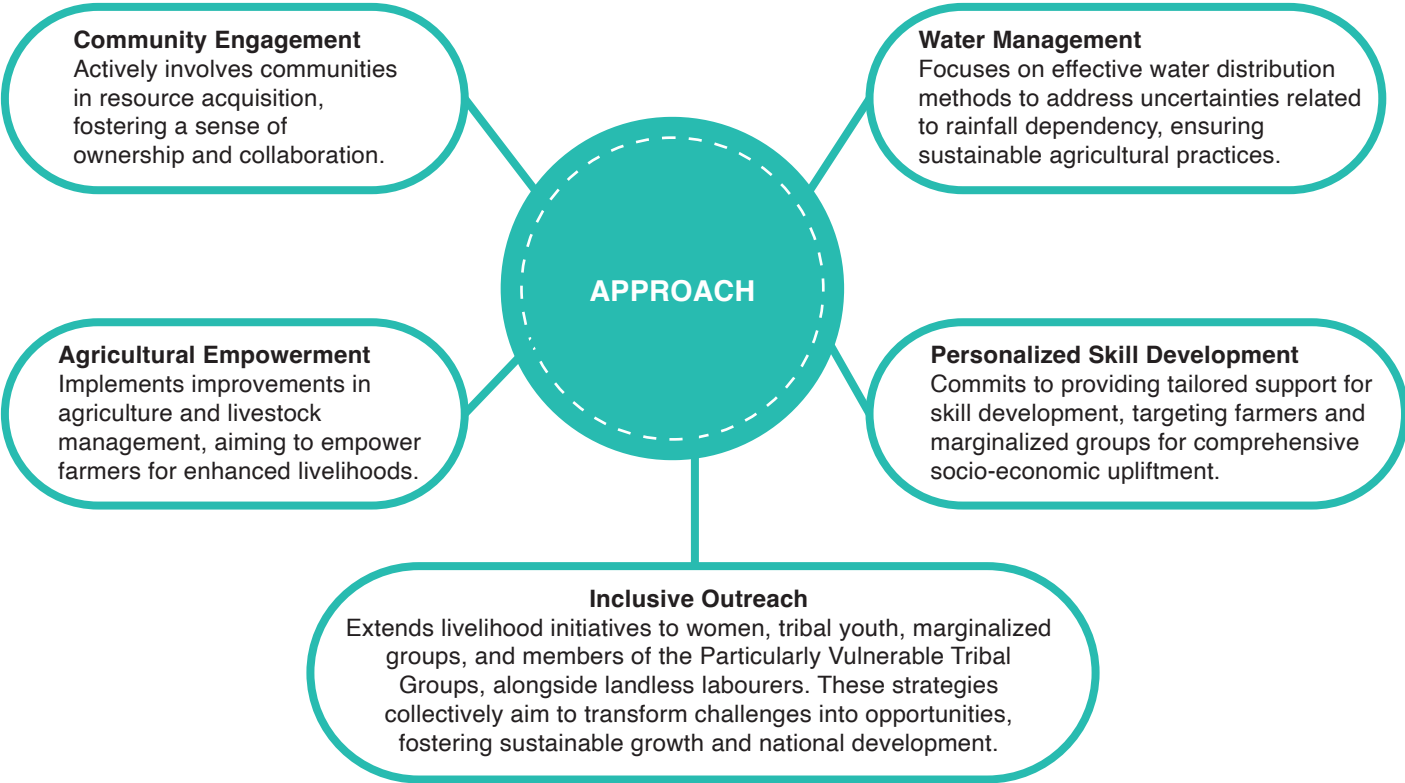
# CHALLENGES FACED BY RURAL & TRIBAL COMMUNITIES

<b>LACK OF COMMUNITY AWARENESS</b>	1	Community members lack awareness about tailored interventions, both farm and non-farm based, as well as available schemes and their utilization. Additionally, they have limited understanding of the documentation process and lack support for accessing these schemes.
<b>MIGRATION FOR INCOME</b>	2	Communities constantly move in search of income opportunities due to limited accessibility to resources.
<b>LIMITED RESOURCE ACCESSIBILITY</b>	3	Essential resources like land, water, and seeds are difficult to access, hindering sustainable agricultural practices.
<b>RAINFALL DEPENDENCE</b>	4	Relying solely on rainfall for agriculture leads to uncertainty and economic instability due to unpredictable weather patterns.
<b>AGRICULTURAL PRODUCTIVITY GAPS</b>	5	Disparities in productivity due to outdated techniques and poor livestock management perpetuate poverty and impede economic progress.
<b>SKILL DISPARITIES</b>	6	Limited opportunities for personalized skill development result in expertise gaps, particularly among farmers and marginalized groups, hindering the adoption of modern practices.
<b>GENDER DISPARITIES IN LIVELIHOODS</b>	7	Women in rural areas face restricted access to livelihood opportunities, including participation in agriculture and non-farm activities.
<b>EXCLUSION OF TRIBAL YOUTH AND MARGINALIZED GROUPS</b>	8	Obstacles prevent tribal youth and marginalized communities from accessing interventions, widening economic disparities.
<b>VULNERABILITY OF LANDLESS LABORERS</b>	9	Landless laborers are vulnerable to economic shocks and lack consistent livelihood opportunities, necessitating targeted interventions for upliftment.
<b>LIMITED OUTREACH TO PARTICULARLY VULNERABLE TRIBAL GROUPS (PVTG)</b>	10	Specialized outreach strategies are required to address the unique socio-economic needs of Particularly Vulnerable Tribal Groups and ensure their inclusion in development efforts.
<b>RESISTANCE TO CHANGE</b>	11	Traditional practices and resistance to adopting new farming techniques hinder the implementation of effective interventions.
<b>ENVIRONMENTAL SUSTAINABILITY CONCERNS</b>	12	Balancing agricultural productivity with environmental sustainability is challenging, as unchecked practices can lead to soil degradation and water resource depletion.
<b>EXPLOITATION BY LOCAL MIDDLEMEN</b>	13	Ambiguity and false information spread by local middlemen contribute to exploitation within communities.



STRATEGY:

By implementing the following strategies, we aim to address the needs of the most vulnerable populations in targeted rural and tribal areas while fostering collaboration among stakeholders and ensuring the sustainability and scalability of our interventions.





## NATURAL RESOURCE MANAGEMENT



In pursuit of sustainable agricultural practices, LTPCT has successfully implemented a range of initiatives designed to enhance natural resource management. Key interventions include the establishment of check dams, the deployment of solar lift irrigation systems, and the implementation of drip irrigation infrastructure. These strategic measures empower farmers by providing them with the tools to increase the frequency and extent of cultivation. The overall impact includes promoting crop diversification and significantly boosting agricultural productivity.

The application of these initiatives is specifically executed in Dang region of Gujarat, where LTPCT collaborates with Aga Khan Rural Support Program (India) as the implementation partner. In Vansda block of Gujarat, our trusted partner for implementation is BAIF Development Research Foundation.

### WATER RESOURCE DEVELOPMENT (DANG, VANSDA)

A

In regions characterized by the scarcity of water, such as Dang and Vansda, local communities have actively supported initiatives aimed at improving irrigation practices. These efforts encompass the promotion of diverse water harvesting structures, including solar-based lift irrigation, flex-net drip irrigation, and farm ponds. To ensure the sustainability of these practices, the maintenance of irrigation infrastructure has been a priority, with a focus on check dam desilting to support optimal water storage. Recognizing that many of these infrastructure developments are novel concepts for the local population, LTPCT has organized multiple training sessions to enhance community understanding and ensure effective implementation, along with ownership of the project.

#### CHECK DAMS REPAIRED AND DESILTING

VANSDA

CHECK DAMS  
REPAIRED

4

STORAGE CAPACITY  
INCREASED

9,984,362 liters

FARMERS  
BENEFITED

51

LAND  
IRRIGATED

83 acres

#### DRIP IRRIGATION

VANSDA

TOTAL  
BENEFICIARIES

125

TOTAL  
HOUSEHOLDS

25

TOTAL  
VILLAGES

5

LAND  
COVERED

28.52 acres

**EFFICIENCY IMPACT** → INCREASED IRRIGATION EFFICIENCY OVER 57 ACRES

#### SOLAR LIFT IRRIGATION (SOUTH GUJARAT)

VANSDA

UNITS  
INSTALLED

6

FARMERS  
BENEFITED

105

LAND  
COVERED

78.9 acres

BARREN LAND  
TRANSFORMED

19.05 acres

## WATER DISTRIBUTION SCHEME (PVTGs)

## CHONDA

HOUSEHOLDS  
REACHED

75

INDIVIDUALS  
BENEFITED

375

MASONRY FIELD  
OUTLETS INSTALLED

25

BENEFICIARIES GAINED  
ACCESS TO CLEAN WATER

125

LAND  
COVERED  
62.5 acresSCHOOL CHILDREN  
BENEFITED  
196 at Chondha school

## CHECK DAM DESILTING AND RENOVATION

## DANG

CHECK  
DAMS  
DESILTED

7

STORAGE  
CAPACITY  
INCREASED  
99,84,362 litersTOTAL  
FARMERS  
BENEFITED

255

TOTAL  
LAND  
IRRIGATED  
84.25 acres  
by 51 farmersSECOND  
CROP  
CULTIVATION  
35.1 acres  
by 25 farmers

## DRIP IRRIGATION, BENEFICIARIES

## DANG

TOTAL  
BENEFICIARIES

275

TOTAL  
HOUSEHOLDS

55

TOTAL  
VILLAGES

13

LAND  
COVERED  
32.75 acres

## SOLAR LIFT IRRIGATION

## DANG

UNITS  
INSTALLED

6

FARMERS  
BENEFITED

77

INDIVIDUALS  
BENEFITED

385

LAND  
COVERED  
129.88 acres

BARREN LAND TRANSFORMED INTO PRODUCTIVE AGRICULTURAL AREAS ➔ 12 ACRES

## FARM PONDS

## DANG

FARM PONDS  
COMPLETED

16

LAND UNDER  
IRRIGATION  
22.5 acresFARMERS  
BENEFITED

45

FISH  
HARVESTED1,523 kg  
sold by 7 farmersINCOME  
GENERATED

Rs. 2,02,559

IN COLLABORATION AGA KHAN, ACTIVITIES ARE BEING CARRIED OUT ➔ 14 PONDS.

## SOLAR LIFT IRRIGATION

## VIKRAMGAD

UNITS  
INSTALLED

3

FARMERS  
BENEFITED

41

INDIVIDUALS  
BENEFITED

225

LAND  
COVERED  
85 acres

BARREN LAND TRANSFORMED INTO AGRICULTURAL LAND ➔ 5 ACRES

SOIL AND WATER CONSERVATION (DANG)

B



In the targeted project regions, addressing the challenges posed by uneven or hilly agricultural land, water drainage issues, soil erosion, and inefficient irrigation practices has been pivotal. The implementation of strategic measures has proven instrumental in overcoming these challenges and contributing to sustainable agricultural development. Land leveling emerges as a significant intervention, effectively expanding the cultivable area and mitigating the constraints associated with uneven topography. Additionally, the utilization of gabions structures in lower areas, where multiple drainage lines converge, stands out as a durable solution to combat soil erosion.

The adoption of deep Continuous Contour Trenches (CCT) has yielded substantial benefits by reducing runoff rates, thereby enhancing percolation and groundwater levels. Complementary to this, the construction of nala plugs across drainages has facilitated water storage, improved percolation, enhanced soil moisture, and significantly reduced soil erosion. These measures collectively highlight the project’s success in addressing critical issues related to soil and water conservation. To ensure the sustained impact of these initiatives, village-level training sessions were conducted, sensitizing communities to the importance of soil and water conservation.

The training sessions emphasized the relevance and methods of implementing conservation structures, encouraging active community participation and community contribution through collective labor towards their development. This approach ensures the protection of cultivable land and fosters a sense of ownership and responsibility within the community.

SOIL AND WATER CONSERVATION DANG

NALA PLUGS	CONTOUR TRENCHES	GABION STRUCTURES
8 plugs	1,867 meters installed	50 built

LAND TRANSFORMATION DANG

LAND LEVELED	FARMERS BENEFITED
68 acres	543

WATER MANAGEMENT DANG

DRIP IRRIGATION ADOPTION	WATER SAVED
70% water savings	2,36,362 cubic meters

COMMUNITY IMPACT DANG

COLLABORATIVE EFFORT	AREA COVERED
125 farmers involved	118.3 acres in South Gujarat villages



FARM BASED

A

Under this section, LTPCT endeavors to enhance agricultural practices, improve yield quality, and optimize livestock management. A crucial component involves providing essential irrigation infrastructure to farmers, leading to increased cultivable land. By integrating modern agricultural techniques, the project aims to boost crop yields, enhance produce quality, and elevate community income. LTPCT is actively engaged in promoting agricultural diversification initiatives, encouraging farmers to explore high-value crops, especially vegetables. Through comprehensive support encompassing seed distribution, and farm mechanization, farmers are empowered to engage in both creeper and non-creeper cultivation practices under this program. Implementation partners that have supported this initiative in BAIF in Vansda, Ahwa are AKRSP & VRUTTI in Vikramgad.

CREEPER BASED VEGETABLE CULTIVATION (VANSDA, AHWA, VIKRAMGAD)

Farmers are receiving support in diversifying their cultivation methods, with a specific emphasis on the cultivation of creepers. A significant number of farmers have embraced creepers through self-support and adoption, facilitated by the assistance of collection centres to make the selling more systematic.

TOTAL BENEFICIARIES

VANSDA

FARMERS ENGAGED	TOTAL BENEFICIARIES	LAND COVERAGE	IVY GOURD YIELD
533 (300 new, 233 seasoned)	2,665 individuals	62.12 acres	1,080 kg

TOTAL BENEFICIARIES

AHWA

FARMERS SUPPORTED	INDIVIDUAL BENEFICIARIES	LAND CULTIVATED
131 96 new, 35 existing	480	550 farmers cultivated 16.37 acres



## NON- CREEPER BASED VEGETABLE CULTIVATION (AHWA, VANSDA, VIKRAMGAD)



### TOTAL BENEFICIARIES

#### VANSDA

FARMERS ENGAGED

**750**

CULTIVATION METHOD

**NON-CREEPER AND CREEPER VEGETABLE**

TOTAL LAND AREA

**93.75** acres

RABI PULSES/OILSEEDS DEMONSTRATION

**250** farmers

### TOTAL BENEFICIARIES

#### AHWA

FARMERS ENGAGED

**96**

CULTIVATION METHOD

**NON-CREEPER AND CREEPER VEGETABLE**

INDIVIDUAL BENEFICIARIES

**480**

TOTAL LAND AREA

**16.37** acres

### TOTAL BENEFICIARIES

#### VIKRAMGAD

PADDY DEMONSTRATIONS

**644** farmers

AGRICULTURAL CROP DEMONSTRATION

**200** farmers  
**10,000** individuals

TOTAL LAND AREA UNDER AGRICULTURE DEMONSTRATION

**29.25** acres

## HORTICULTURE DEVELOPMENT (VANSDA, VIKRAMGAD, TALASARI)

Horticulture cultivation was promoted as it empowers farmers by diversifying crops, enhancing income, and promoting sustainable agriculture. It provides a resilient and profitable alternative, improving livelihoods and fostering agricultural resilience.

### TOTAL BENEFICIARIES

#### VANSDA

FARMERS ENGAGED

**300**

TOTAL TURNOVER

**Rs. 15 lakhs**

DIFFERENT ACTIVITIES

**MANGO NURSERY MANAGEMENT, FERTILIZER AND SEED SALES**

## TOTAL BENEFICIARIES

## VIKRAMGAD

## GREEN INITIATIVE

**16,000**

plants distributed

**2,000**

farmers

## HORTICULTURE EFFORTS

Each family received

**8** plants**3** mango**3** cashew**2** drumstick trees

## FRUIT TREE PLANTATION SCHEME

**124** proposals submitted**94** proposals sanctioned**Rs. 75.2 lakhs**

total turnover

## TOTAL BENEFICIARIES

## TALASARI

## FARMERS COVERED

**2,029**

## PLANTS CULTIVATED

**16,232**

## FARMER PRODUCER ORGANIZATION (FPO)

Cashew Processing Units (CPU) set up

Benefiting 2500 households (12,500 beneficiaries)

28 farmers trained through BAIF at VRUTTI office

## AGRICULTURAL EXTENSION INITIATIVES (AHWA, VIKRAMGAD)



In a concerted effort to transform rural landscapes, our agriculture and allied initiatives aim to empower farmers through sustainable practices and mechanization. From digital awareness for farmers to innovative government schemes to skill-building programs, we promote holistic growth for communities and cultivate a resilient agrarian future.

## THRESHING MACHINES DISTRIBUTION

## AHWA

## TOTAL BENEFICIARIES

**24** farmers

## TOTAL TURNOVER

**Rs. 1.48 lakhs**

## AGRICULTURAL TRAINING BENEFICIARIES

AHWA

SESSIONS  
CONDUCTED

747

COLLECTION  
CENTERS SET UP

2

TOTAL  
VILLAGES

14

INDIVIDUAL  
FARMERS

96

## CROP MANAGEMENT TRAINING

AHWA

FARMERS  
TRAINED

747

FOCUS

CREEPER & NON-CREEPER  
VEGETABLE CULTIVATION, RABI CROPS

## DIGITAL AND FINANCIAL LITERACY

VIKRAMGAD

SESSIONS CONDUCTED

627

BENEFITED INDIVIDUALS

1,625

## FARMERS PRODUCER GROUPS (FPGs)

VIKRAMGAD

FORMATION BENEFICIARIES

364

PIT DIGGING SESSIONS BENEFITED

2,000 farmers

## MULTIPLE AGRICULTURAL TRAININGS

VIKRAMGAD

BENEFICIARIES

1,143 farmers

TOPICS

PADDY MANAGEMENT, PEST CONTROL,  
SEEDLING NURSERY MANAGEMENT

## FIELD VISITS AND DEMONSTRATIONS

VIKRAMGAD

FARMERS BENEFITED 200

## SUSTAINABLE PRACTICES

VIKRAMGAD

BENEFICIARIES

117 farmers

INITIATIVES

DRIP AND MULCHING DEMONSTRATIONS, SOP  
ENFORCEMENT, INNOVATIVE CULTIVATION METHODS

## LIVELIHOOD INTERVENTIONS

VIKRAMGAD

AWARENESS  
MEETINGS

117 farmers

FAMILIES IDENTIFIED

250 FOR AGRICULTURE AND  
ALLIED ACTIVITY DEMONSTRATIONS

## FARMER FIELD SCHOOL ORGANISED

VIKRAMGAD

PURPOSE ➔ CONTINUOUS LEARNING AND IMPROVEMENT



### INSTITUTION SUPPORT

Institutions such as the Water User's Group (WUG), SHG Group, Gram Vikas Mandal (GUM) Farmer Producer Group (FPG), and Farmer Producer Organization (FPO) play a pivotal role in offering ongoing support. In Dang, a Farmers' Field School has been established as a central hub for coordinating agricultural and animal husbandry training sessions and workshops. This collaborative platform brings together farmers, enabling mutual learning and knowledge exchange with visiting experts.

### GREEN INITIATIVE (REGIONS OF DANG, VIKRAMGAD)

The Green Initiative Talasari Project represents a progressive stride towards establishing an alternative and sustainable source of income for deserving families. The primary objective of this project is to furnish an additional income stream, with a particular focus on benefiting farmers. During the year, we have provided guidance to farmers, imparting knowledge on orchard plantation, horticulture plant nurturing, bio input preparation, indigenous fencing techniques, and overall plant management practices to ensure their well-being.

Prior to the implementation of the project, we equipped farmers with both direct and indirect information on various aspects, including planting saplings, digging pits, selecting suitable materials for pit filling, determining watering frequency, applying appropriate fertilizer inputs, and implementing protective fencing measures. Under the Green Initiative in the regions of Vansda, Dang, and Vikramgad, the project collaborates closely with the forest department to safeguard and augment green cover. Plant distribution to numerous households (HH) is a key aspect of this initiative, contributing significantly to environmental conservation, biodiversity enhancement, and the promotion of sustainable living within communities.

### PLANT DISTRIBUTION BENEFICIARIES

#### DANG

#### COLLABORATION WITH FOREST DEPARTMENT

TOTAL PLANTS  
DISTRIBUTED

**3619** Plants of Diverse Species, including  
Fruits and Forest Plants

HOUSEHOLD  
BENEFICIARIES

**520**

#### ENVIRONMENTAL SUSTAINABILITY INITIATIVE

TOTAL PLANTS  
DISTRIBUTED

**10,000**

INDIVIDUAL  
BENEFICIARIES

**501**

### INITIATIVE TO INCREASE GREEN COVER

#### VIKRAMGAD

TOTAL PLANTS  
DISTRIBUTED

**16,000** initially

TOTAL  
FARMERS

**2,000**

TOTAL  
VILLAGES

**26**

THE COMMITMENT TO EXPANDING AND PRESERVING GREEN SPACES CONTINUED WITH THE DISTRIBUTION OF A TOTAL OF **32,754** plants.



## LIVESTOCK MANAGEMENT

B



LTPCT is actively introducing innovative livelihood options for Particularly Vulnerable Tribal Groups (PVTGs), focusing on diversifying their income sources. Through this initiative, the project offers comprehensive livestock management support to the community, providing beneficiaries with dairy product manufacturing machines and establishing market linkages. Dairies are directly intervened with their members, focusing on improving cattle productivity. Collaborations with Vashudhara Dairy and Sumul Dairy involve capacity building on management practices and milk processing. Pashu Sakhi from villages is included in training to monitor and guide the community of tribals living in Dang.

## CATTLE DEVELOPMENT CENTER

VANSDA

HOUSEHOLDS  
BENEFITTED

86

ARTIFICIAL  
INSEMINATIONS (AI) CONDUCTED

394

## MILK DAIRY UNIT

VANSDA

DAILY MILK  
COLLECTION

60 liters

PRODUCTS  
MADE

6

TOTAL TURNOVER  
IN 4 MONTHS

1.75 lakhs

INDIVIDUAL  
BENEFICIARIES

100

HOUSEHOLDS  
BENEFICIARIES

10

## TRAINING SESSIONS

FOOD PRODUCTS LIKE SHRIKHAND, PANEER, GHEE, PEDDA, CURD, AND BUTTERMILK

## MACHINERY SUPPORT

CREAM SEPARATOR AND PACKAGING MACHINE.

## FINANCIAL PERFORMANCE

VANSDA

GROSS PROFIT

Rs. 0.22 lakhs

NET PROFIT IN 8 MONTHS

Rs. 0.15 lakhs

## LIVELIHOOD SUPPORT

VANSDA

INTRODUCED SMALL RUMINANT  
-BASED LIVELIHOOD OPTIONS

20 PVTG families

GOATS  
PROVIDED

4

BUCKS  
PROVIDED

1

## COLLABORATIVE TRAINING

NARHAI DAIRY UNIT SUPPORTED BY 10 SHG MEMBERS  
WITH UPSKILLING TRAINING IN COLLABORATION WITH TEPLU.

## LIVESTOCK SUPPORT

DANG

PROVIDED  
TWO GOATS

**28** households

DISTRIBUTED  
COWS AND CALVES

**33** households

## FODDER DISTRIBUTION

SUPPLIED NAPIER GRASS FODDER TO **35** FARMERS FROM UNDERPRIVILEGED SECTIONS.

## COMMUNITY STRENGTHENING

STRENGTHENED SELF-HELP GROUPS (SHGS) AND VILLAGE INSTITUTIONS.

## EDUCATIONAL SESSIONS

CONDUCTED PASHU SHIKSHA SESSIONS IN THE TRIBAL REGION.

## NON-FARM BASED



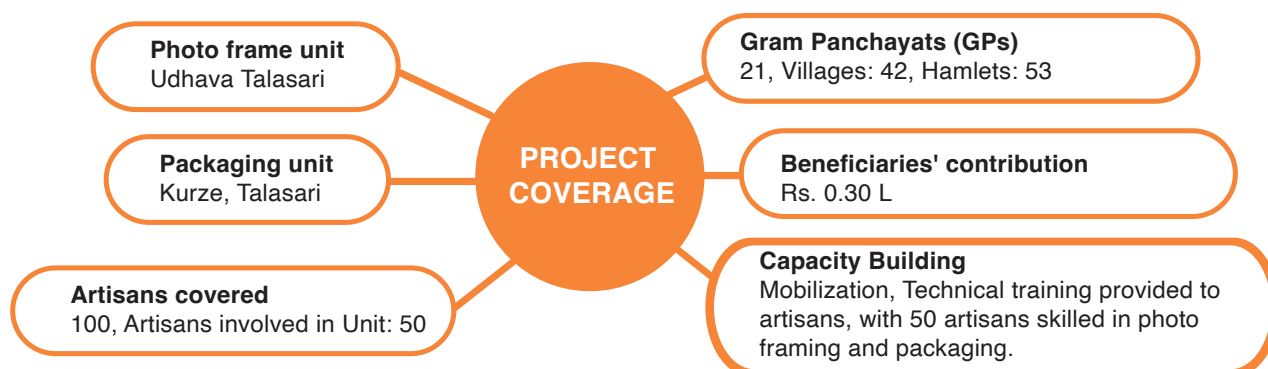
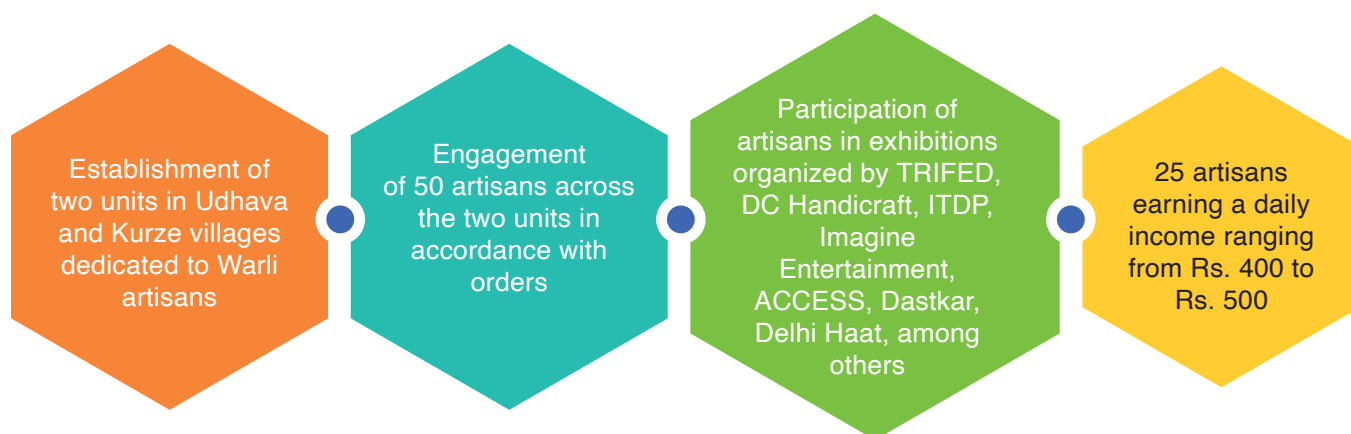
## WARLI ARTISANS (PHOTO FRAMING AND PACKAGING UNIT)

A

Project Uddyam aims to enhance the income of artisans in Talasari by focusing on creating an ecosystem for institution building, capacity development, and market linkage, with an emphasis on empowering women artisans. The initiative strives to establish Talasari as the first model convergence block by preserving its traditional art and culture. Key interventions include cadre training, formation of Producer Groups (PGs), exposure visits, buyer-seller meets, and new product development. Mobilization efforts involve engaging with young people, convincing artisans to join PGs, and supporting skill enhancement. Despite challenges, the project team has provided work orders to women and artisans, facilitated Artisan Cards, and built social capital. Institution building, particularly through producer groups and cadre training, emphasizes the benefits of collective work, division of labor, and adherence to timelines.

LTPCT actively engages in strengthening business development, governance, and leadership through initiatives focused on appropriate institutional development. LTPCT has established 2 Warli units, engaged in collaborative efforts for market tie-ups, and facilitated various skill enhancement workshops in partnership with stakeholders. The project is executed in collaboration with Access Development Services (ADS), pursuing a dual goal through the mobilization of producer groups and the diversification of market linkages. This approach not only elevates the quality of artisanal products but also significantly enhances their income.

## KEY INTERVENTIONS



## TOTAL BENEFICIARIES

TALASARI



EMPLOYMENT OPPORTUNITIES ➔ **YEAR-ROUND EMPLOYMENT CREATED FOR ARTISANS**

## FINANCIAL SUCCESS

TALASARI

Successful sale of Warli art wooden and photo products

TOTAL SALES

**Rs. 3.85 lakhs**

NET PROFIT

**Rs. 2.31 lakhs**

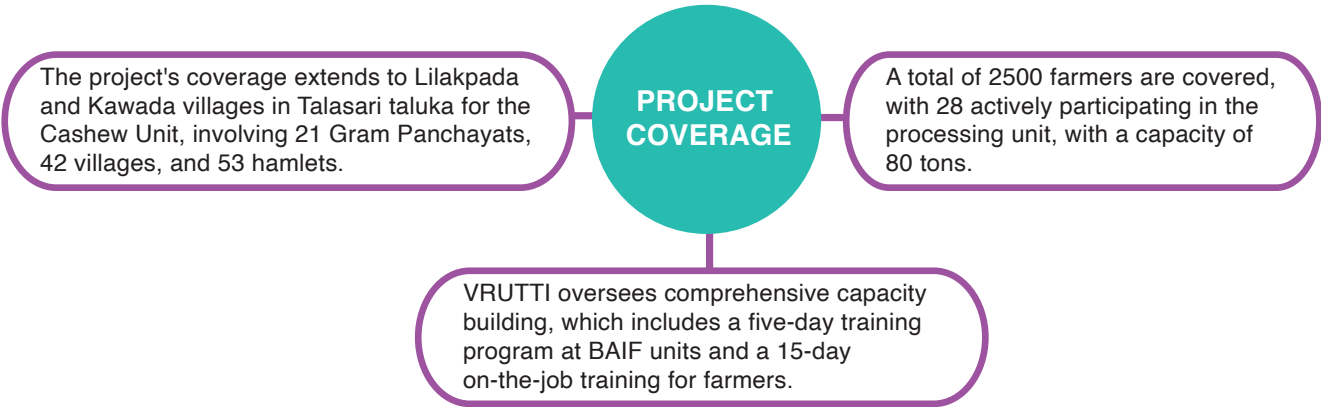
CASHEW PROCESSING UNIT

B



In collaboration with BAIF and VRUTTI, LTPCT is implementing the Livelihood Development Program in Talasari region of Palghar district. The focus is primarily on building institutions, such as establishing a Cashew Processing Unit (CPU). The program involves crucial interventions, encompassing resource mobilization, setting up processing units for steaming, cutting, drying, peeling, grading, and packing, forming market connections, institutional development, and capacity building.

As part of these initiatives, VRUTTI oversees the unit with technical assistance from BAIF. During the fiscal year 2022-2023, we identified 2,500 farmers with cashew trees, linking them to a Farmer Producer Company (FPC) / Farmer Producer Organization (FPO). Training was also provided to 28 farmers, including both males and females. The FPO collaborates with various stakeholders for market linkages, resulting in these 28 farmers now earning daily incomes ranging from Rs. 150 to Rs. 200.



TOTAL BENEFICIARIES			TALASARI
TOTAL CASHEWS PRODUCED	FINANCIAL CONTRIBUTIONS	CASHEWS SOLD	REVENUE GENERATED
875 kg	Rs. 6.5 lakhs	595 kg	Rs. 3.97 lakhs
<div><div>↑</div><div>INCREASED</div><div>SUSTAINABLE INCOME FOR CASHEW PLANTATION FARMERS EMPLOYMENT OPPORTUNITIES IN THE PROCESSING UNIT</div></div>			

SALES CHANNELS

Exhibitions, NGO melas, and collaborations with L&T, LTPCT, Silvassa, and BAIF



JANSAKHI UNIT (KHAREL)



**Promoting Women's Empowerment**  
This model creates an ecosystem for underprivileged women, emphasizing skill education, health, business development, and overall empowerment. The program envisions mobilizing communities, providing livelihood support, strengthening market linkages, and improving social, educational, and health outcomes.




**Jansakhi model is a comprehensive program aimed at promoting women's empowerment, entrepreneurship, and convergence.**

**Income Generation**  
The Hub and Spoke model aim to increase income among Jansakhis through entrepreneurship support and referral work, involving home tailoring, stuffed toys, festive work, community awareness, and connecting unemployed youth to skill-building programs.

PROJECT OVERVIEW

The Anil Naik Technical Training Center (ANTTC), established in 2006 in Kharel, Gujarat, is dedicated to providing vocational training to school dropouts and marginalized youth. In collaboration with the National Skill Development Corporation, ANTTC focuses on capacity building and inclusion through initiatives like the 'Jansakhi' platform, which supports women alumni during financial challenges. ANTTC's Yojana Kendra promotes start-up entrepreneurship and life skill development through awareness campaigns. The approach includes forming producer groups, self-help groups, financial planning, and promoting sustainable enterprises through value chain development across various sectors.



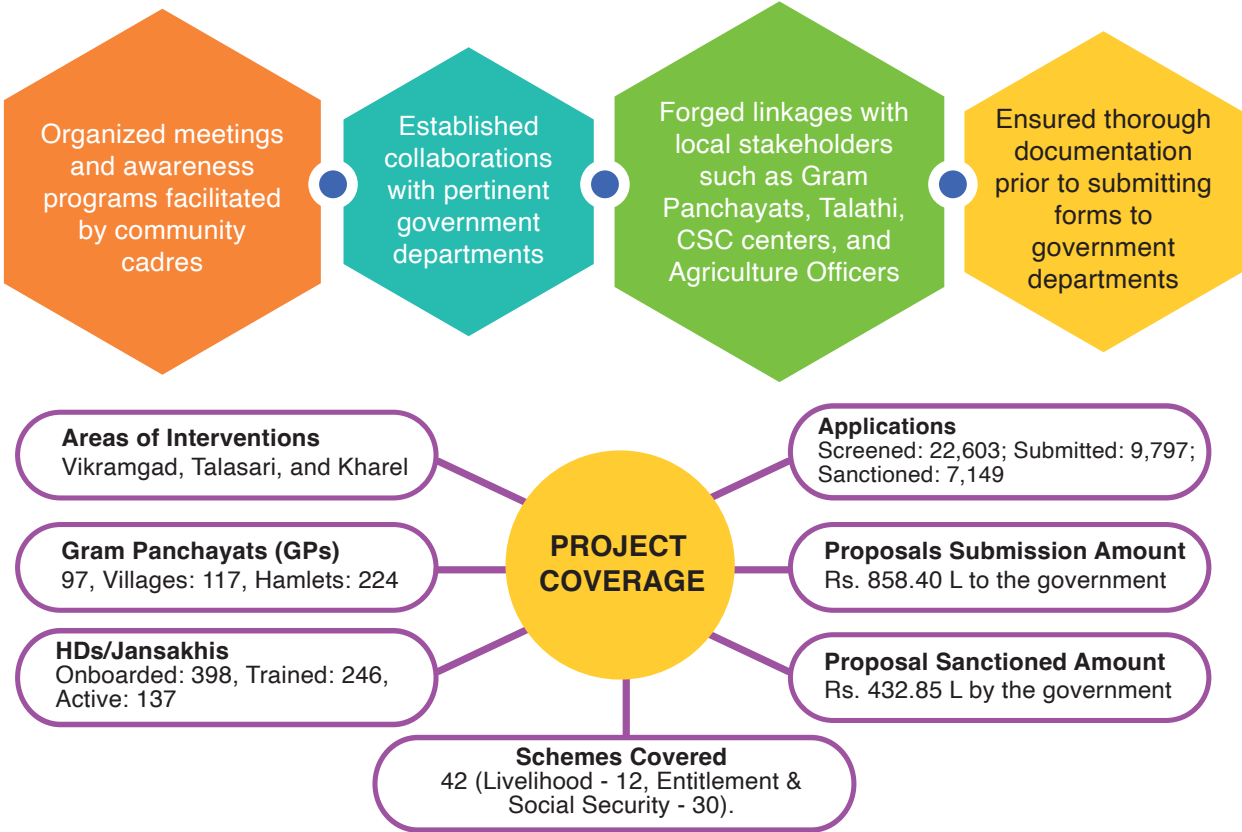
 CHALLENGES	 SOLUTION	 ACTIVITIES
At ANTTC, the team identified challenges, including a low literacy rate among women, low per capita income, early marriages, domestic abuse, and unemployment. The 'Jansakhi' model aims to address these issues by providing skill-based training and creating income-generating opportunities for women.	The 'Hub and Spoke' model is designed to uplift Jansakhis through entrepreneurship and access to social entitlements support, community awareness, and skill-building. It identifies various income sources, such as student referral schemes, small business setups, Jan Yojana Kendra, Asani pads sales, festive work, and connections to industry partners. The distribution model involves procuring product materials based on orders, establishing a dedicated storage unit for material storage, distributing materials among Jansakhis based on working capacity, conducting quality checks during product receipt, and packing and dispatching products as per requirements.	Jansakhi participants underwent training on various topics, including digital literacy, soft skills, entrepreneurship, government schemes, PoSH (Prevention of Sexual Harassment), and health and hygiene. The training aimed to equip them with the necessary knowledge and skills to become proficient micro-entrepreneurs. Workshops on Bamboo crafting, Warli art, and Rakhi making were held at ANTTC in Kharel.

CONVERGENCE INITIATIVE



PROJECT OVERVIEW

The Convergence Initiative, a crucial aspect of LTPCT Project Uddyam, is dedicated to enhancing Social Entitlement by seamlessly connecting government programs with the people of Vikramgad, Talasari, and Navsari. This initiative aims to bridge the gap between citizens and various welfare schemes, fostering collaboration with relevant government departments and local stakeholders.



TOTAL BENEFICIARIES

KHAREL, VIKRAMGAD, TALASARI

COMMUNITY ENGAGEMENT  
**137** cadres

GOVERNMENT SCHEMES  
**22,603** individuals

DIRECT IMPACT  
**7,149** individuals

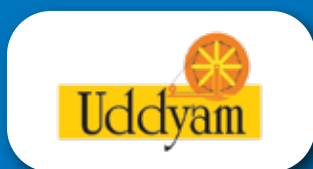
GOVERNMENT COLLABORATION

EFFECTIVE COLLABORATION WITH GOVERNMENT AGENCIES

CITIZEN ENGAGEMENT

INCREASED CITIZEN INQUIRIES ABOUT WELFARE SCHEMES

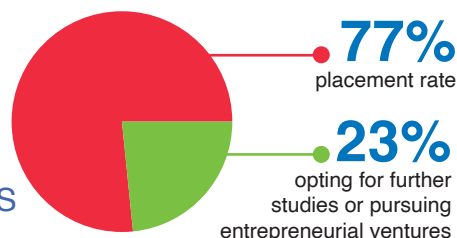
# ACCESS TO SKILL BUILDING



**LTPCT's Uddyam Skill Development initiative addresses the growing demand for skilled professionals in rural areas, fostering economic growth and individual prosperity.**

Committed to reaching marginalized sections, the program actively engages with those facing socio-economic challenges, providing essential skills to youth and women from economically disadvantaged backgrounds for sustainable livelihoods.

TRAINED  
OVER  
**60,000**  
INDIVIDUALS



Anik Naik Technical Training Center which was established in 2006, began with rural skills training, evolving from agromechanics, rural electricians to a diverse range of trades, including welding, fitting, solar, apparel, beauty, Tally and office assistantship. We introduced women-centric vocational courses, acknowledging the need for skilled professionals, and actively promote gender diversity within its center, resulting in positive shifts in industry norms. Eventually, LTPCT recognized that there were college dropouts in addition to school dropouts, so introduced the office assistantship and Tally programs financially supported by L&T Technology Services (LTTS) along with Digital Literacy Program to cater to both groups.

Aligning with NSDC accreditation and partnering with various organizations has tackled challenges, including gender stereotypes, to ensure broader enrolment. Employability enhancement efforts incorporate mandatory soft skills and digital literacy, along with collaborations for certifications with Sector Skill Councils and eminent industries. Stipends and residential facilities are provided for youth from remote tribal areas. Industry partnerships focus on Strong industry ties, high placement ratios, and expanding infrastructure reflect upon program success as well as addressing gender stereotypes, and promoting gender equality as cross-cutting themes. Engagement with companies for industry insights, events for student-employer interaction, and continuous improvement through feedback contribute to program success. Strategic collaborations with diverse industries facilitate hands-on training and employment opportunities, fostering growth and empowerment.

The initiatives at ANTTC - Kharel Skill Development Center are in collaboration with Orion Educational Society aiming to meet the demand for skilled workers in Navsari and neighbouring areas, ensuring sustainable livelihoods, especially for women.



# ANIL NAIK TECHNICAL TRAINING

## SKILL DEVELOPMENT CENTER (KHAREL)



Established in 2006 by LTPCT and supported by Naik Charitable Trust, the Anil Naik Technical Training Center (ANTTC) in Kharel focuses on empowering school dropouts, unemployed youth, and women through vocational training and entrepreneurship programs. The ANTTC campus spans 5 acres and includes an auditorium with a capacity of 700, residential facilities for 108 boys and 90 girls, NSQF-aligned labs, and 40-seater classrooms well equipped with Digital Learning available for each trade. Courses

offered at ANTTC include Electrician, Field Technician for Home Appliances, Automotive Service Technician, Welder, Fitter Fabrication, Solar Lighting Technician, Solar PV Manufacturing Technician, Beauty Therapist, Sewing Machine Operator, Office Assistantship, and Tally Program. The Second Chance Program based on National Institute of Open Schooling and Gujarat State Board is an opportunity for the school drop of trainees of mainstreaming into formal education. The training approach involves sector-aligned placement, certified instructors, practical labs, and Sector Skill Council evaluations.



**"SELF-EMPLOYED TAILOR TRAINING"** program spans three months, focusing on creating customized dresses, covering tasks such as measuring, cutting fabric, sewing with standard machines, and making alterations based on customer preferences.



**"ASSISTANT BEAUTY THERAPIST"** program is a comprehensive three-month training covering Beauty & Wellness, Skin Care, Hair Care, and Spa Advanced skills. It emphasizes responsibilities like Beauty Therapy, Health & Hygiene, Safety, and knowledge of Beauty Products.



**DIGITAL LITERACY PROGRAM**, Course of Computer Concepts supported by L&T Technology Services, s including school dropouts and unemployed individuals. It aims to make them digitally literate, aligning with the Government of India's digital empowerment initiative. The program covers five digital competency categories: Information Management, Communication, Collaboration, Digital Media, and Internet Tools. This initiative not only imparts essential computer skills to the trainees but also enhances their confidence and improves their prospects for better job opportunities. NASSCOM's assessment and certification further validate the acquired knowledge. The Digital Literacy Training aligns with the Government of India's goal of making one person in each household digitally literate.



**ADDRESSING THE EMPLOYMENT NEEDS** of 12th-grade graduates in Navsari district, Gujarat, the Office Assistantship program trains young individuals in Kharel for roles such as Office Assistant. Emphasizing key skills like communication, organization, record-keeping, computer proficiency, and basic accounting, the program spans three months.



TOTAL BENEFICIARIES

KHAREL

ANTTC STUDENTS  
481

specializing in various technical fields such as Auto Mechanics, Welder, Fitter, Electrician, Solar Panel Technician, Beauty, and Apparels have completed the course.

HOSTEL FACILITIES



Anil Naik Technical Training Center based at Kharel has gained credence over a period of more than 15 years. The need assessment studies of Navsari and Dang, where LTPCT has recently entered, have established need of opening new employment avenues for the youth from these remotest tribal areas, which are otherwise not available in their vicinity. With the vision of providing an equal gainful livelihood opportunity to the youth from these areas through skill building; hostel facilities were introduced at the center in the year 2022-23.

Residential facilities, accommodating 429 trainees aged 15-32, serve as vital platforms for marginalized youth, to access skill-building opportunities. The facility with the majority of trainees (392) belonging to the Scheduled Tribes (ST) community, the hostel has effectively addressed the needs of those who lack access to educational and skill-building resources in their hometowns. Through its inclusive environment, the hostel fosters collaboration among trainees from diverse backgrounds and experiences, preparing them for the multicultural workforce. By offering skill-building programs and hands-on experiences, the hostel equips students with the necessary tools for success in the job market, empowering them to pursue fulfilling careers and contribute meaningfully to society.

TOTAL BENEFICIARIES

KHAREL

STUDENTS FROM  
DIFFERENT DISTRICTS  
429

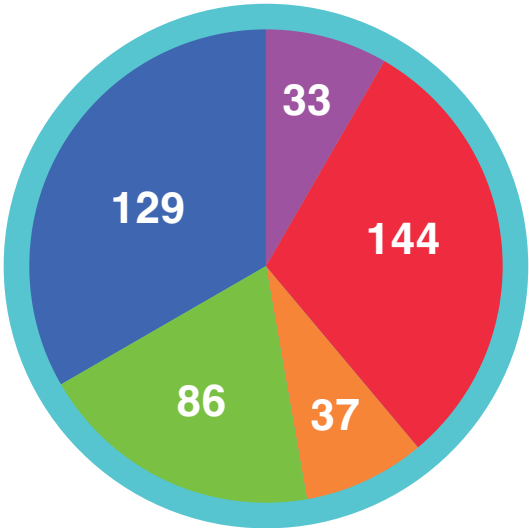
- TOTAL (429)

DANG

VANSDA
- TAPI

VALSAD

OTHER DISTRICTS





# HEALTH THAT STRENGTHENS



**Health is wealth;** this age-old understanding remains the corner-stone of the **‘Aarogya’ program.**

Although crucial to human existence, health displays a concerning pattern of unequal distribution among the masses. India, renowned for its cultural diversity, also deals with disparaging access to healthcare facilities. 'Aarogya' program' aims to reach the underprivileged sectors, and enhance health care through a diverse range of interventions.

LTPCT has identified a range of challenges, including inadequate access to healthcare in rural and tribal areas, a deficient system and skills, technological and funding constraints, and insufficient awareness and affordability. In recognition of these health needs, our 'Aarogya' program adopts a comprehensive approach to achieve the United Nations' Sustainable Development Goal #3, "Good Health and Well-being." This initiative strives to make the goals of ensuring a healthy life and promoting well-being for all, at all ages, both attainable and affordable.

**The initiatives under Aarogya program are built around the principles of preventive, curative, promotive health care for the disadvantaged sections of society and includes:**

**Community  
Health  
Centres**

**Health  
Promotion**

**Mobile  
Health  
Units**

**Health  
Infrastructure**

## COMMUNITY HEALTH CENTRES (CHC)



LTPCT Community Health Centres (CHCs) are categorized as a tier between Primary Health Centres (PHC) and Community Health Centres, established by the government. These centres are designed to provide comprehensive and primary healthcare services to a specific geographic area or community.

CHCs offer a range of interdisciplinary services, encompassing primary care, diagnostics, and remedial services, playing a pivotal role in promoting health and well-being at the grassroots level. Their primary focus areas include routine health check-ups, immunizations, maternal and child health services, treatment of common illnesses, and the management of chronic diseases. They adopt a holistic approach, providing preventive, promotive, curative, and rehabilitative care.

To ensure the effective achievement of targeted outcomes and impact, CHCs extend their reach through Multi-Speciality Units, Mobile Health Units, health promotion and awareness programs, screening camps, and specialized maternity and child care services.

LTPCT Community Health Centres (CHCs) are strategically set up at eight locations spanning three states, contributing to enhanced healthcare accessibility. This geographical spread ensures that diverse communities in **Maharashtra, Gujarat, and Tamil Nadu** have local access to the essential healthcare services provided by these CHCs.

### TOTAL BENEFICIARIES

2021-22

**2,61,094**

DIFFERENCE

**42,683** ▲

2022 - 23

**2,18,411**

### ACROSS MULTIPLE LOCATIONS



Maharashtra ➔ **Mumbai (Andheri & Powai), Pune (Lonavala)**



Gujarat ➔ **Vadodara & Surat**



Tamil Nadu ➔ **Chennai, Coimbatore, & Kuppam Village**

### AN OVERVIEW OF ACTIVITIES ACROSS ALL COMMUNITY HEALTH CENTERS (CHCS) ➔

**Vadodara:** Relocated to a larger facility, offering expanded diagnostic services (sonography, X-ray, pathology) and dental services. Added consultation services in gynaecology, dermatology, and counseling. 2 Mobile Medical Vans cover all regions of Vadodara, providing free consultations and medications to patients.

**Surat:** Maintained dialysis, multispeciality OPD, and diagnostic services. Conducted capacity building for staff in handling emergencies.

**Lonavala:** Introduced psychiatric consultation services, supported local Anganwadi and police with basic diagnostic and consultation services.



**Nirali Hospital (A. M. Naik Charitable Health Care Facility):** The center continues to provide essential services for special needs children, contraception, pediatric immunization, and has performed 63 free cataract surgeries. Cases of anemia and diabetes referred from various community medical camps are treated without charges. The center has also expanded its services to include oral contraceptives. Additionally, the Center actively supports the special initiatives of LTPCT – Center for Special Children, offering medical, therapeutic, and counseling assistance at no cost to children with special needs.

**Chennai:** Upgraded with additional OPD services, supporting Anganwadi with ICPD in various initiatives.

**Coimbatore:** Introduced dental services, continued work under Ante Natal Care and Public-Private Partnership. Expanded the Mobile Health Unit with a second unit for unreached areas at the request of the Coimbatore Public Health Department.

**Kuppam:** Underwent a partner association change but continued operations under the new collaboration.

## MULTI-SPECIALITY CENTERS (MSCs)



### Dialysis & Antiretroviral Therapy (ART)s

Catering to diverse health needs with dedication, Multi-Speciality Centers (MSCs) have maintained their commitment to the intensive needs of patients. The low or no-cost initiative has made 'Health Care' easily accessible to underprivileged sections, impacting their lives at multiple levels and leading them towards a better living standard with full dignity and heightened optimism.

### AN OVERVIEW OF ACTIVITIES ACROSS ALL MSCs INCLUDES ➡

**Surat:** L&T Health and Dialysis Center in Surat offers quality healthcare facilities and services at affordable rates, covering a range from dentistry to dialysis. It includes medical consultations supported by high-end diagnostic radiology and pathology services. This unique center under LTPCT conducts health skill training programs in four streams: dialysis technician, laboratory technician, operation theatre technician, and Cath lab technician. 7446 dialysis were carried out covering 58 patients.

**Vadodara:** L&T Health & Dialysis Center in Vadodara, a unit of LTPCT, was established on August 13, 2013, with the vision of providing medical facilities to the underprivileged community of Vadodara at concessional rates. The center operates with 12 dialysis beds, 9 OPD specialities, and super specialities, along with an in-house pharmacy and outsourced laboratory. It operates independently, particularly in dialysis and mobile health services, distinguishing itself from other health centers. Moreover, it is the first center after L&T ART Center to have a full-time pharmacist managing both the center's pharmacy and mobile health units.

**Nirali Hospital:** 3446 dialysis were carried out covering 110 patients.



**Andheri:** Established through a PPP project in collaboration with Mumbai District Aids Control Society (MDACS) and National AIDS Control Organization (NACO), it plays a crucial role in supporting the government's efforts to combat HIV/AIDS. The Anti-Retroviral Therapy Center continued providing services for people living with HIV/AIDS and received a total of 55 new cases this year. As a special initiative, the center initiated ongoing group counseling sessions, with counselors conducting about 80 sessions covering various topics essential for life skills. Through this project, patients are provided with free consultation and counseling services. It also offers free blood investigations, including basic blood tests, CD4, and VL testing, as well as X-ray, sonography, and CBNAAT for diagnosing TB in HIV/AIDS patients.

**Chennai:** Larsen & Toubro Coimbatore Health Center, was established in January 2012 near L&T Coimbatore Campus. The center focuses on delivering high-quality primary healthcare at affordable costs, primarily targeting the vulnerable sections of society in Madukkarai Block and the South Zone of Coimbatore Corporation. Services offered include outpatient care, pathology, a vision center, Pradhan Mantri Bhartiya Janaushadhi Kendra, and a Mobile Health Unit. Specialized consultations in Gynecology, Pediatrics, ENT, and Dermatology are available, along with counseling services covering nutrition, reproductive health, and psycho-social support, provided by qualified professionals. During the year, 4106 dialysis were carried out covering 29 patients.

## TOTAL BENEFICIARIES

## ACROSS MULTIPLE LOCATIONS

PATIENTS

**197**

DIALYSIS SESSIONS

**149,980**

## MOBILE HEALTH UNITS(MHUs) AND CAMPS



Mobile Health Units reach the underprivileged population in urban and rural areas in three states Gujarat, Maharashtra, and Tamil Nadu. These units and health camps aim to provide easy and better access to people in remote villages, offering free-of-cost services within a radius of 25-30 kilometre.

## LTPCT COLLABORATED WITH VARIOUS ORGANIZATIONS IN DIFFERENT REGIONS, INCLUDING ➡

- J. V. Gokal Charitable Trust -Vikramgad, Karjat, Talegaon, Lonavala
- Social Action for Manpower Creation (SAMPARC) -Talegaon
- Weaker Section & Tribal Rehabilitation Charitable Trust (WESTRIC ) -Coimbatore
- Hand in Hand India-Kuppam, Chennai
- Laxi Care Foundation -Surat
- Centre For Health Education, Training and Nutrition Awareness (CHETNA)-Vansda

## GLIMPSES OF MHUs RUN IN DIFFERENT REGIONS ➔

**Vikramgad:** Providing healthcare services to women, adolescents, pre-school children, and the elderly at their doorsteps in selected villages. Twenty-nine villages in Palghar district benefit from the MHU initiatives, with over 12,000 individuals receiving direct services annually.

**Karjat:** Focusing on delivering healthcare services directly to women, adolescents, pre-school children, and the elderly at their doorsteps in 24 villages.

**Surat:** Successfully organized 304 camps in villages on the peripheries of Surat city, reaching a total of 16,163 direct beneficiaries.

**Vadodara:** Two Mobile Health Units conducted 588 medical camps, reaching 59,564 beneficiaries, serving both urban slums and villages on the peripheries.

**Vansda:** MHU started functioning in July 2022, covering 12 villages and 17480 population.

**Chennai:** Conducted 140 camps in Chennai slums, benefiting 14,373 individuals.

**Coimbatore:** Second MHU, arranging 391 general medical camps with a total of 36,257 beneficiaries.

**Kuppam:** The MHU team in Katupalli, under Kuppam CHC, conducted health camps and

awareness programs, reaching 18 villages in Pazhaverkadu block of Thiruvallur district, benefiting 15,663 beneficiaries.

**Pune (Lonavala, Mawal and Talegaon):** These MHUs cater to about 38 villages of Mawal block of Pune covering about 15000 population.



## TOTAL BENEFICIARIES

## ACROSS MULTIPLE LOCATIONS

IN 2021-22

1,65,169

IN 2022 - 23

1,41,840

INCREASE

23,329 ▲

## COMMUNITY HEALTH PROJECTS



## COMMUNITY HEALTH AND CURABLE BLINDNESS CONTROL PROJECT FOR TRIBAL COMMUNITIES (VIKRAMGAD) A



LTPCT, with support from Larsen and Toubro Welfare Company, is executing the Community Health and Curable Blindness Control Project, aiming to ensure access to care for curable blindness in the tribal community within the Vikramgad block in Palghar, Maharashtra. The project aims to provide quality eye care services at the doorsteps of the tribal community, conduct screenings for vision deformities to identify and address eye health issues, enhance the quality of life by offering improved vision treatment, and prevent blindness. It has a special focus on school children to address their unique eye care needs and organizes specialized camps within the community to ensure broader outreach and accessibility.

### TOTAL BENEFICIARIES

### VIKRAMGAD

EYE  
SCREENINGS

**5,009**

EYE  
GLASSES FREE

**3,558**

CATARACT  
SURGERIES

**1000**

Repaired and upgraded **Rotary Eye Hospital in Talwada**, including the renovation of the operation theatre and patient wards to accommodate 40 patients (20 male and 20 female), along with support for medical and surgical equipment.

## MATERNAL AND CHILD HEALTH PROJECT IN TALWADA (PHC), VIKRAMGAD B



LTPCT, in collaboration with the J.V. Gokal Charity Trust, is executing a Maternal and Child Health Project in Talwada (PHC), Vikramgad. The project aims to enhance the registration for Antenatal Care (ANC) and ensure comprehensive ANC services, decrease the incidence of low-birth-weight infants, minimize the count of high-risk mothers in the project vicinity, and enhance the nutritional well-being of Severe Acute Malnutrition (SAM) children. During the year, 67 main Anganwadis and 14 mini Anganwadis were covered from Talwada PHC area.

**IMPROVING ANC REGISTRATION  
AND SERVICES**TOTAL  
BENEFICIARIES**2,864**TOTAL  
VISITORS**10,247****REDUCING LOW  
BIRTH WEIGHT**TOTAL  
BENEFICIARIES**1,481**TOTAL  
VISITORS**2,829****REDUCING HIGH-RISK  
PREGNANCIES (HRP)**TOTAL  
BENEFICIARIES**574**TOTAL  
VISITORS**607****IMPROVING NUTRITIONAL STATUS  
AMONG SAM CHILDREN**TOTAL  
BENEFICIARIES**261**TOTAL  
VISITORS**239****SENSITIZING ADOLESCENTS TOWARDS  
FAMILY LIFE EDUCATION (FLE)**TOTAL  
BENEFICIARIES**3,226**TOTAL  
SESSIONS**50****COMMUNITY AWARENESS SESSIONS**

Throughout the year, Community Mobilizers conducted health, nutrition, and personal hygiene awareness sessions on various occasions, including Immunization Activity, Manav Vikas Diwas, Breastfeeding Awareness for ANC/PNC mothers, and Health Hygiene Awareness for ANC/PNC mothers.

HEALTH EDUCATION  
DAY SESSIONS**409**SUB HEALTH  
CENTERS**6**TOTAL  
BENEFICIARIES**8,044****SPECIAL ACTIVITY INITIATIVES**

Sensitization Sessions on ANC Care for formally unwed couples had 22 participants.

HAND WASHING  
SESSIONS**162**BREASTFEEDING  
AWARENESS**160**POSHAN MAH  
PEOPLE INVOLVED**853**



## CAPACITY BUILDING AND TRAINING WORKSHOPS FOR FRONTLINE HEALTH WORKERS

A workshop on Health, Hygiene & Nutrition aspects for Frontline Health Workers in Talwada, including ASHAs, AWWs & ANMs, **was attended by 147 participants.**

## CAPACITY BUILDING CUM TRAINING OF VILLAGE HEALTH SANITATION & NUTRITION COMMITTEE (VHNSC)

ATTENDEES FOR GRAM  
PANCHAYAT LEVEL MEMBERS

**136**

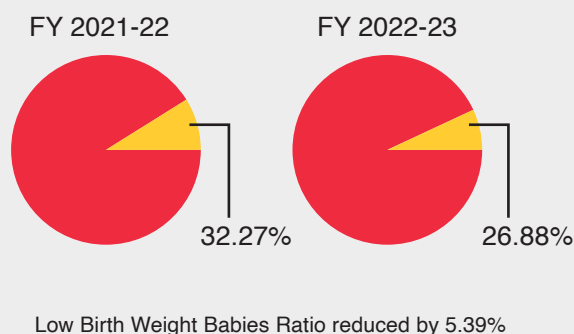
ATTENDEES FOR  
WORKSHOP

**147**

## PEDIATRICIAN CAMP AT PHC (TALWADA)

The A Pediatrician camp was initiated due to the absence of pediatrician services at PHC **benefiting 381 children.** The MCH project team, with the help of ASHAs and AWWs, mobilizes SAM/MAM and other children for health check-ups. The camp provides free services, and transportation is facilitated by PHC.

- 919 ANC registrations were successfully completed.
- Efforts to reduce HRPs resulted in 274 normal deliveries out of 294.
- At the end of the fiscal year, 18 SAM children are receiving regular guidance and education.



## MATERNAL AND CHILD HEALTH PROJECT IN VANSDA (NAVSARI) AND AHWA (DANG)



L&T Public Charitable Trust and CHETNA India, in collaboration with ICDS and the Health Departments of Vansda block in Navsari district and Ahwa block in Dang district, organized a "Poshan Mela" in villages. The primary aim was to raise awareness about the significance and necessity of nutrition, liberating common people from the adverse effects of malnutrition by promoting locally available traditional foods. The event also sought to enhance women's understanding of health and nutrition through various games and activities.

TOTAL BENEFICIARIES

VANSDA (NAVSARI) AND AHWA (DANG)

WOMEN PARTICIPATION	VILLAGES COVERED	<b>Tamasha</b> Local drama, community-wide awareness	TOTAL VILLAGERS ATTENDED
1,286	55		11,000

The Sarpanchs, village leaders, Anganwadi Workers, Accredited Social Health Activists, and Auxiliary Nurse Midwives were completely involved in facilitating different games. Women found the mela enjoyable and educative, describing it as a fantastic learning experience imbued with fun, thus fostering a conducive learning environment and mindset among villagers.

Furthermore, various group counseling sessions were conducted, addressing parents of undernourished children and focusing on women's health. International Women's Day, Nutrition Week, Breastfeeding Day, among many others, were also celebrated as part of these endeavors.

The **Mobile Medical Unit (MMU) successfully covered 15 villages** in Lachhakdi, Vansda, providing essential healthcare services. The MMU is dedicated to providing diagnostic, curative, and preventive health services, with a special focus on maternal and child health, treatment of common ailments, and services such as OPD consultations, home-based care for diarrhea, information dissemination on menstruation, and Hb testing.

A comprehensive capacity-building program has been implemented, covering **99** health frontline workers, including ANMs, ASHAs, and AWWs.

PROJECT SWATAH → COMMUNITY-BASED

MENTAL HEALTH PROGRAM (MUMBAI)



LTPCT, in collaboration with the Institute for Exceptional Children, implements Project SWATAH—a community-based mental health project operating in Tunga Village, Powai, Mumbai. Its primary goals include promoting awareness, destigmatizing mental health, and empowering individuals to recognize when and where to seek help. SWATAH actively supports communities by sharing knowledge and providing training for community leaders, frontline workers, and caregivers. The project is dedicated to promoting the well-being and mental health of individuals across various age groups.

## PROJECT SWATAH (MENTAL HEALTH)

This project collaborates with Anganwadis, schools, self-help groups, doctors, nurses, community health volunteers (CHVs), Mohalla Committee, police personnel, senior citizens, Mitra Mandals, and community-based organizations within Tunga.

The collaboration involves implementing a range of interventions such as individual counseling sessions, group awareness sessions on mental health well-being, Mental Health Awareness and Screening Camps, and a Mental Health Mela.

**The Objectives:** Raising awareness about the interconnectedness of mental and physical health, educating the community on stress symptoms and coping mechanisms, ensuring accessibility to health and mental health services, and establishing supportive community channels for program assistance.

During the year, physical screening triage for clients was organized, including various awareness camps such as Cancer Awareness and Mental Health Awareness. Health camps in schools were conducted for students from Jr. Kg to grade 10, and a special Health Screening Camp took place on World Oral Health Day, among other initiatives.

### TOTAL BENEFICIARIES

### MUMBAI

COMMUNITY MEMBERS WERE MADE AWARE OF MENTAL HEALTH WELL-BEING

**3333**

EDUCATED ABOUT MENTAL HEALTH TRIGGERS AND COPING STRATEGIES

**4490**

PEOPLE AVAILED HEALTH AND MENTAL HEALTH SERVICES

**155**

COMMUNITY CHANNELS WERE CREATED FOR PROGRAM SUPPORT

**16**

## CENTER FOR SPECIAL CHILDREN (CSC) PROJECT

E



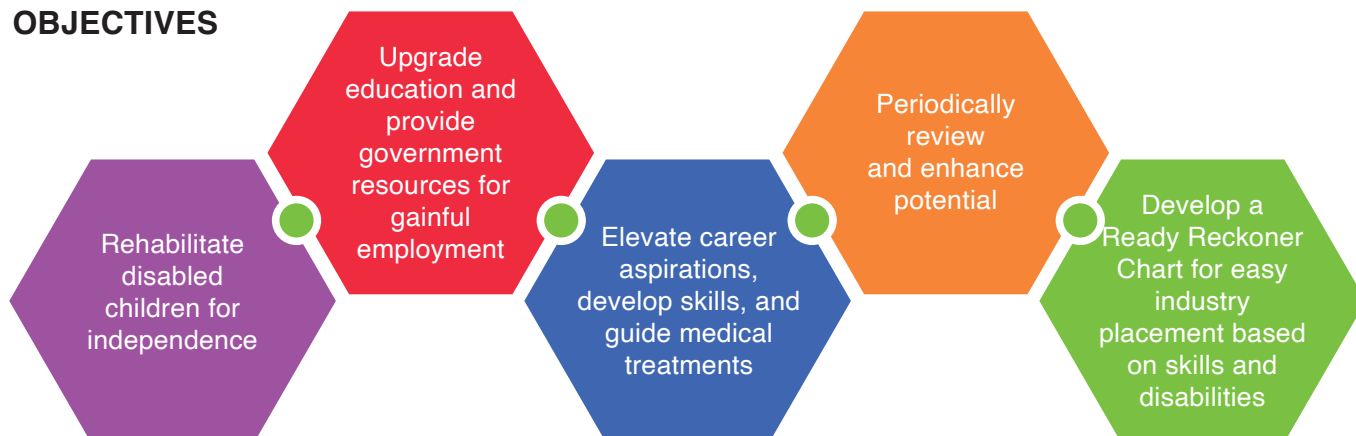
Guiding disabled children for better rehabilitation, evaluating abilities, connecting children for treatment, and fostering educational capabilities.

URBAN SLUMS & SCHOOLS IN MUMBAI, WITH AN INITIAL FOCUS AROUND POWAI

### OVERVIEW

The Persons with Disabilities Act of 1995 reinforces affirmative action, empowering individuals with disabilities. While government schemes address disability, access remains a challenge. In an effort to provide early intervention for children up to 10 years old, addressing challenges and enhancing educational outcomes, LTPCT, in collaboration with Sneh Deep Trust, is implementing the Center for Special Children Project (CSC). The project's primary goals include raising awareness within underprivileged communities and improving the health and educational levels of disabled children through annual reviews and guidance. The overall purpose is to maximize the abilities of these children, increasing their opportunities for employment or entrepreneurial success.

## OBJECTIVES



## DETAILS

Establishing a Child Disability Guidance Center in Powai



## STRATEGIES

- Conducting meetings with departments at Nirali Hospital, schools, and community organizations.
- Implementing health check-up plans in schools, starting with private schools and expanding to municipal and tribal schools.
- Developing awareness leaflets, advocating collaboration with schools, and engaging community leaders.
- Maintaining continuous coordination with government centers and institutions in the field.

### Strategies for Assessment/Diagnosis

Preparing the center with required manpower and equipment for exclusive services.

Branding the space, consolidating services under one roof for diagnosis and assessment.

Conducting screening camps at the village level.

### Treatment Plan

Identifying a team of doctors, including existing doctors from Nirali and partners.

Providing advice, treatment, and assistance in procuring prosthetics or undergoing surgical interventions.

Assessing educational levels and periodically reviewing progress.

Maintaining a database of rehabilitation centers and available benefits for disabled individuals.

## TOTAL BENEFICIARIES OF NIRALI'S OPD AND OUTREACH CAMPS

MUMBAI

AWARENESS PROGRAMS  
CONDUCTED IN SCHOOLS

42

COMMUNITY  
CAMPS

12

TOTAL  
CONSULTATIONS

84

10

RECEIVED  
SUBSIDIZED  
PROSTHETICS

1 ANKLE-FOOT PROSTHESIS

6 SPECTACLES FOR LOW VISION PATIENTS

3 HEARING AIDS



Furthermore, **64 children received free or subsidized investigations**, physiotherapy, and other interventions. Those requiring speech therapy or other therapies were referred to various hospitals and foundations, including **Nirali Hospital in Andheri East, MBA Foundation in Chandivali Andheri, Mangla Hospital, Wadia Hospital in Parel, Ajnihh in Bandra West, and ReLiva.**

## HEALTHCARE SKILLING COURSES IN COLLABORATION F WITH KOTWALWADI TRUST (NERAL-KARJAT, RAIGAD, MAHARASHTRA)



To enhance healthcare skilling courses, our initiative focuses on upgrading course content, training facilities, and upskilling trainers. The General Duty Assistant (GDA)-Basic initiative has been introduced to equip individuals with the skills necessary for quality patient care in nursing homes and hospitals. Through this initiative, there is a collective effort to contribute to the improvement of healthcare skills in the region.

While providing skills training, it is imperative to upskill the present human resource and upgrade the training facilities for imparting best quality training. Hence, **'Ausra Health'** an agency in health sector was invited to provide technical support to Kotwalwadi Trust. **The primary objective is to broaden the impact of these courses by providing comprehensive knowledge and technical assistance.** To address these objectives, the project encompasses diverse activities that touch upon different facets of the skilling program. This includes refining course contents, setting job role standards, upgrading training facilities, establishing a center grading matrix, conducting trainer assessments, evaluating Training of Trainers (TOT) in domain knowledge, computer/IT skills, soft skills, and training delivery skills, as recommended by Healthcare Sector Skill Council (HSSC) ensuring compliance with Skill India standards. The initiative also delves into skilling processes, conducting manpower assessments, and evaluating materials/equipment availability.

### GENERAL DUTY ASSISTANT (GDA) COURSES ➡

In collaboration with Kotwalwadi Trust, skill-building courses aimed at creating employment opportunities and raising awareness about first aid in rural communities were conducted. These courses are affiliated with Skill India, NSDC, and Health Sector Skills Council, specifically the Subsector of Allied Health and Paramedics.

The General Duty Assistant (GDA) courses, encompassing both basic and level-4 training, **attracted a total of 161 participants.** The introduction of 6 months basic GDA course during the year, endorsed by NSDC and designed for school dropout women provides them a second chance to upskill and earn through home care assistance jobs. Goals of the outreach initiative included reaching remote areas in Karjat, Murbad, and Khalapur taluka, and also from Palghar district empowering tribal women, providing training to enhance financial conditions and self-sustainability, maximizing job placements for students, facilitating home care assistance for seniors and patients, and fostering awareness in the community about first aid and health certification.

TOTAL TRAINEES	<b>161</b>	<b>GDA LEVEL - 4</b>	<b>Total 131 trainees, 80 trainees are placed (61%)</b>
		<b>BASIC GDA</b>	<b>Total 30 trainees, 24 trainees are placed (80%)</b>

INCOME OF GDA - LEVEL 4 TRAINEES

**Rs. 4,000 - 10,000 per month**

INCOME OF BASIC GDA TRAINEES

**Rs. 10,000 to 20,000 per month**



# SUSTAINABLE MANAGEMENT AND EQUITABLE ACCESS TO WATER



Water, as the lifeblood of nature, can aptly be referred to as 'Jeevan'. Although our planet is predominantly 'blue,' with over 70% covered in water, the portion suitable for sustaining life is a mere 1%. The 'green' ecosystems depend on the sustainable utilization of this precious 'blue' resource. The sustainable use of water plays a pivotal role in fostering overall development. Rural and tribal regions consistently face the most significant challenges in dealing with water scarcity.

Rainwater, ground/surface water, and equitable water distribution remain the three essential components of the water triangle. The increasing call for collective efforts in sustainable water resource management is backed by undeniable statistical evidence. Livelihoods are significantly reliant on water, a fact particularly evident in rural and tribal communities. To enhance livelihood, which can eventually create a positive impact on the overall growth and development of the unprivileged; water availability holds the key. Public-private partnerships wield the power to drive exceptional initiatives, leading to desirable outcomes and facilitating a smooth transition into an empowering impact.

## CHALLENGES



Geographical  
terrain issues



Low water table  
due to rainwater  
runoff



Lack of  
structures for  
saving and  
storing  
rainwater



Resource  
scarcity for  
micro-irrigation

## STRATEGIC APPROACH

LTPCT adopts a dual strategy in its WASH interventions. The initiatives involve implementing Solar-Based Irrigation to support the cultivation of second crops and providing water directly to households through Water Distribution and Supply Systems. The approach for the JEEVAN intervention encompasses establishing prototypes in specific geographical rural and tribal regions. This is achieved by leveraging all available resources and collaborating with the community, NGOs, government entities, and other stakeholders. After evaluating the impact and ensuring its effectiveness, the initiatives are then expanded to reach a broader audience and provide widespread benefits.

## INTERVENTIONS

In rural India, where agricultural success hinges on seasonal rains and natural water sources, LTPCP has led transformative efforts to tackle these persistent challenges. Their initiatives encompass the construction of check dams, borewells, drip irrigation systems, farm ponds, and solar lift-irrigation projects, crucial for ensuring reliable water access for both household needs and local agricultural enterprises. Beyond mere infrastructure development, LTPCP adopts a holistic approach, understanding the importance of augmenting tribal farmers' household incomes. These integrated projects not only bolster agricultural productivity but also foster community well-being. Collaborating closely with implementation partners, LTPCP strives to make a meaningful and sustainable impact on rural livelihoods.



ENSURING ACCESS TO WATER FOR BOTH HOUSEHOLD NEEDS AND AGRICULTURAL PURSUITS, FOSTERING SUSTAINABLE GROWTH AND DEVELOPMENT THE FOLLOWING INTERVENTIONS ARE UNDERTAKEN

Access to Improved and Sustained Water Resources and Usage

Engaging Farmers with Sustainable Agricultural Practices

Solar Lift Irrigation Project

Empowering Community with Training and Capacity Building

## SOLAR LIFT IRRIGATION PROJECT



This intervention aims to achieve, strategic use of sustainable technology, cost-cutting measures, and promotion of eco-friendly farming practices. Solar-powered irrigation system not only reduces electricity expenses but actively contributes to curbing carbon emissions, fostering a healthier environment in tribal areas. The primary objective continues to be the upliftment of farmers' income in regions with scarce water resources, employing sustainable technology, cutting costs, and promoting an eco-friendly farming approach. Our collaborative efforts with Vrutti on the "Solar Powered Lift Irrigation System" initiative in Talasari represent a significant stride toward modernizing farming practices. Specifically tailored for second crop irrigation.

Building on the success of our WASH initiative in Talasari block of Palghar district, Maharashtra, we've extended our reach to Gujarat, partnering with the Aga Khan Rural Support Program in Ahwa Block of Dang District and collaborating with BAIF in Vansda Block of Navsari District. Our emphasis remains on crafting interventions that align with community needs, enhancing water sources, and promoting efficient utilization.

### 'SOLAR POWERED LIFT IRRIGATION SYSTEM' IMPLEMENTED IN THE FOLLOWING HAMLETS IN GUJAR & MAHARASHTRAAT ➡

#### TALASARI

BOBIPADA, DONGARIPADA, HADALPADA, PATILPADA, VADUPADA, PATILPADA, LILAKPADA, VALHAYIPADA, GAVTHANPADA, DOLHARPADA,

#### AHWA BLOCK

UMARPADA, TEMRUNGHARTA, BORKHAL, GAYKHAS, CHAVADVEL, CHOKAYA

#### VANSDA BLOCK

NIRPAN, KANADHA, MOLAAMBA

### OBJECTIVES

- Enhancing second crop irrigation, aiming to bring modern and scientifically validated farming practices to farmers. This initiative is expected to enhance productivity and improve crop quality.
- Our focus is on tailoring interventions to community needs, enhancing water sources, and promoting efficient utilization in Gujarat too.
- Key interventions include borewell recharge and the promotion of sustainable practices such as drip irrigation and the repair of check dams to support second crop cultivation in the region.

## TOTAL BENEFICIARIES

## ACROSS MULTIPLE LOCATIONS

TOTAL  
BLOCKS

3

TOTAL  
VILLAGES

15

TOTAL  
FARMERS

746

FARMER  
GROUPS

43

SOLAR UNITS  
INSTALLED

30

PUMPING  
STATIONS

40

PANELS

1134

FUEL SAVED  
IN 8 MONTHS

106975.2 litres

CARBON EMISSION  
REDUCED IN 8 MONTHS

287102.4 kg

	PALGHAR	DANG	NAVSARI
SOLAR UNITS COVERAGE	16	10	4
GRAM PANCHAYATS, VILLAGES	7,7	2,5	3,3
BENEFICIARIES (FARMERS > GROUPS)	481>29	184>10	81>4
AGRICULTURAL LAND (ACRES)	250.4	171	78.21
CROPS CULTIVATED	Chilli, Okra, Tomato, Brinjal, Radish etc.	Vegetables, Channa, Paddy, Millets	Chilli, Okra, Tomato, Brinjal, Radish etc.
PUMP STATIONS	26	10	4
SOLAR PANELS	763	274	97
DAILY FUEL SAVING (LITERS)	293.94	96.49	55.3
CO2 EMISSIONS REDUCTION (KG)	754.13	293.93	148.2

## WATER DISTRIBUTION AND WATER SUPPLY SYSTEMS



This initiative involved constructing essential components like a new borewell, solar water pump, pipelines, storage tanks, and distribution pipelines – all within a 100-meter radius of each residence. Geographical surveys were conducted to identify suitable locations for borewells and check dams, guaranteeing a consistent water supply. Crucially, the entire process unfolded with active community participation, involving residents in decision-making, implementation, and ongoing maintenance. This approach underscores LTPCT's dedication to making a lasting positive impact on the communities it serves.



## STORIES OF ACCOMPLISHMENT

### INTERVENTION: VIDYAA



#### STUDENT'S NAME **Suchita Nitin Baraf**

SCHOOL	ZP Gavitpada School, Gavitpada
GRADE	5th
LOCATION	Maharashtra

Suchita Nitin Baraf, a fifth-grade student at ZP Gavitpada School, initially struggled with language and mathematics, feeling left behind as her peers advanced. Words seemed to jumble up, and numbers danced confusingly on her page.

Determined to overcome these challenges, she enrolled in remedial classes offered by the Educational Engagement Program at Vikramgad. These classes provided her with the focused support she needed, allowing her to slowly unravel the complexities of her subjects with the help of patient teachers.

Her dedication extended beyond academics as she actively participated in extracurricular activities, including reading, essay, and speech competitions, as well as drawing contests. Under the guidance of Mr. Gharat, the school principal, Suchita's skills in reading, writing, and mathematics improved significantly. Her growing confidence in her abilities exemplifies the transformative impact of tailored educational support and holistic learning approaches on students' overall development.

### INTERVENTION: UDDYAM - SKILL BUILDING



#### TRAINEE'S NAME **Shubham Maheshbhai Patel**

AGE	17 years
TRADE	Fitter
LOCATION	Gujarat

Shubham Maheshbhai Patel, a 17-year-old from Gujarat, demonstrated remarkable resilience and determination in the face of financial adversity. Born into a struggling family, he made the tough decision to leave his studies to support them.

Despite these challenges, his aspirations for a better future remained strong. His turning point came when a friend introduced him to the Anil Naik Technical Training Center (ANTTC), where he eagerly enrolled in the Fitter Trade program. At ANTTC, under the guidance of skilled instructors, he developed his technical skills and deepened his understanding of the trade.

Upon completing his training, he secured a position as an operator at Sahaj Solar Pvt. Ltd. with a starting salary of Rs. 1,50,000/- LPA. This achievement not only brought him financial independence but also provided hope for his family. Shubham's journey from adversity to success exemplifies the transformative power of education and opportunity. His story serves as an inspiration, showing that with hard work and determination, one can overcome challenges and achieve great success.

## INTERVENTION: AAROGYA



**PATIENT'S NAME:** Mrs. Kannammal

AGE	62 years
GENDER	Female
PROCEDURE	Ophthalmology-Eye Surgery
LOCATION	Coimbatore

During a routine visit to Senrampalayam, a remote village in Coimbatore, the Mobile Medical Unit (MMU) team encountered Mrs. Kannammal, a 62-year-old woman struggling with cataracts in both eyes.

Her condition, which she had endured for years, severely impacted her vision and daily activities, necessitating frequent assistance from her family. Upon examination, the MMU team deemed her a suitable candidate for cataract surgery. They explained the procedure to her and her family, ensured informed consent, and provided counseling and support to allay any apprehensions. The surgery, performed at a premier hospital in Coimbatore, was successful, and her vision improved progressively over the ensuing weeks with proper post-operative care and follow-up visits.

The intervention significantly enhanced Mrs. Kannammal's quality of life. She regained her independence, restored her visual acuity, and resumed performing daily tasks unaided. She expressed profound gratitude to the L&T Public Charitable Trust and WESTRIC Trust, the NGO partner that facilitated her much-needed treatment. Additionally, this case raised awareness about cataracts and ocular health within the community, while also imparting education and training to local healthcare professionals, thereby bolstering their capacity to deliver quality eye care.



## OUR PARTNERS

### HEALTH

CHETNA Foundation, Ahmedabad  
 Child Help Foundation, Mumbai  
 Community Development Trust, Coimbatore  
 Hand In Hand, Kattupalli & Chennai  
 Institute for Exceptional Children, Mumbai  
 J.V. Gokal Charity Trust, Mumbai  
 Kotwalwadi Trust, Neral  
 Laxi Care Foundation, Surat  
 Prayas Trust, Chennai  
 Rotary Club of Bombay & Powai  
 SAMPARC Foundation, Mawal, Pune  
 Sneh Deep, Mumbai  
 Vision Spring, New Delhi  
 WESTRIC Trust, Coimbatore

### HEALTH CENTERS

L&T Anti-Retroviral Therapy (ART) Center -  
 Koldongari, Andheri  
 L&T Health Center, Coimbatore  
 Prayas Medical Center, Chennai  
 L&T Health & Dialysis Center, Surat  
 L&T Health & Dialysis Center, Vadodara  
 L&T Medical Center, Lonavala  
 Nirali - A M Naik Charitable Healthcare Facility,  
 Powai  
 L&T Health Center, Kattupalli Kuppam - Wellcorp

### EDUCATION

Agastya International Foundation, Bengaluru  
 CHETNA Foundation, Ahmedabad  
 Diganta Swaraj Foundation, Nashik  
 Dr. Manibhai Desai Navchetana School  
 -Chondha  
 Naik Charitable Trust, Mumbai  
 Orion Education Society, Kolkata  
 Pratham Education Foundation, Mumbai  
 SQ Planateria, Mumbai  
 Vipla Foundation, Mumbai



### WATER & LIVELIHOODS

Access Development Services, Delhi  
 Aga Khan Rural Support Program, Dang  
 Agrinext Consultancy, Pune  
 Arpan Seva Sansthan, Udaypur  
 BAIF Development Research  
 Foundation-Gujarat  
 Haqdarshak Empowerment Solutions Private  
 Limited, Bengaluru  
 Vrutti Impact Development, Bengaluru

### SKILL BUILDING

Orion Education Society, Kolkata  
 National Skills Development Corporation, Delhi

### MONITORING & EVALUATION AND CAPACITY BUILDING

Ausra Health  
 Givegrant  
 Map my India  
 S2 Infotech  
 Social Lens Consulting Pvt Ltd  
 SYS Computer Foundation  
 Think Through Consultancy

### FUNDING PARTNERS

L&T Chiyoda Ltd  
 L&T Realty  
 L&T Technology Services, Mumbai  
 L&T Welfare Company Ltd  
 SAP Lab India

SUMMARY OF EXPENDITURE **SCHEDULE - VIII**

Vide Rule 17 (1)

The Maharashtra Public Trusts Act, 1950

Name of the Public Trust: LARSEN &amp; TOUBRO PUBLIC CHARITABLE TRUST

Registration No: E 22226

Balance Sheet As at March 31, 2023

<b>FUNDS &amp; LIABILITIES</b>	<b>Rs.</b>	<b>Rs.</b>
<b>Trusts Funds or Corpus</b>		
Balance as per last Balance Sheet	2,86,08,23,828	
Corpus received during the year	3,90,06,200	2,89,98,30,028
<b>Other Earmarked Funds</b>		
( Created under the provisions of the Trust Deed or Scheme or out of the Income )		
Depreciation Funds	-	
Sinking Funds	-	
Reserve Fund	-	
Any other Fund	4,45,44,294	4,45,44,294
<b>Grant for CSR &amp; Spent</b>		
Grant for CSR - L&T Welfare Company Limited - FY 21-22	38,96,000	-
Spent for CSR - L&T Welfare Company Limited - FY 21-22	(38,96,000)	-
Grant for CSR - L&T Realty Developers Limited (CHI)	10,00,000	-
Spent for CSR - L&T Realty Developers Limited (CHI)	(10,00,000)	-
Grant for CSR - L&T Realty Developers Limited - Old Project	13,47,476	-
Spent for CSR - L&T Realty Developers Limited - Old Project	(13,47,476)	-
Grant for CSR - L&T Realty Developers Limited - New Project	9,39,330	-
Spent for CSR - L&T Realty Developers Limited - New Project	(9,39,330)	-
Grant for CSR - L&T Technology Services Limited - FY 22-23	33,60,000	-
Spent for CSR - L&T Technology Services Limited - FY 22-23	(33,60,000)	-
Grant for CSR - Larsen & Toubro Limited -FY 22-23	7,99,39,991	-
Spent for CSR - Larsen & Toubro Limited -FY 22-23	(11,42,75,680)	(3,43,35,689)
Grant for CSR - Larsen & Toubro Limited- FY 21-22	11,04,93,661	-
Spent for CSR - Larsen & Toubro Limited FY 21-22	(11,04,93,660)	-
<b>Loans - Secured or Unsecured</b>		
From Trustees	-	
From Others	-	
<b>Liabilities</b>		
For Expenses	2,33,13,305	
For Advances	5,31,455	
For Security Deposits Received	7,08,000	
For Sundry Credit Balances	2,16,90,492	
For Others	16,61,329	4,79,04,581
<b>Income and Expenditure Account</b>		
Balance as per last Balance Sheet	54,35,97,720	
Less :- Appropriation, if any	-	
Less :- Deficit as per Income and expenditure Account	-	
Add :- Surplus as per Income and expenditure Account	3,10,19,922	57,46,17,642
<b>TOTAL</b>		<b>3,53,25,60,856</b>



SUMMARY OF EXPENDITURE **SCHEDULE - VIII**

Vide Rule 17 (1)

The Maharashtra Public Trusts Act, 1950

Name of the Public Trust: LARSEN &amp; TOUBRO PUBLIC CHARITABLE TRUST

Registration No: E 22226

Balance Sheet As at March 31, 2023

PROPERTY AND ASSETS	Rs.	Rs.
Immovable Properties - At cost		
Balance as per last Balance Sheet	-	
Additions during the year	-	
Less :- Sales during the year	-	
Depreciation up to date	-	-
Investments		
Mutual funds Schedule - 1 A	24,31,43,296	
(Market value as on 31 March, 2023 Rs.25,38,38,153)		
Government of India Bonds Schedule - 1 B	-	
(Market value as on 31 March, 2023 Rs NIL)		
Tax Free Bonds Schedule - 1 C	3,11,93,04,252	
(Market value as on 31 March, 2023 Rs.315,32,67,930)		
Investment in Fixed Deposit	25,58,366	
Provision for Diminution in value	0	3,36,50,05,914
Fixed assets Schedule -2		3,46,73,556
Deposit		7,64,059
Current Assets & Advances		
To Trustees	-	
To Employees	-	
To Contractors	39,96,045	
To Mutual Funds	-	
To Interest Receivable	9,72,67,255	
To Prepaid Expenses	4,07,844	
To Tax Deducted at Source & Self Assessment Tax	1,35,51,100	11,52,22,244
Cash and Bank Balances		
(a) In Savings Bank Account with HDFC Bank - Mumbai	1,39,83,682	
(a) In Savings Bank Account with HDFC Bank -CSR Mumbai	21,166	
(a) In Savings Bank Account with HDFC Bank - Surat	20,221	
(a) In Savings Bank Account with HDFC Bank - Vadodra	60,918	
(b) In Savings Bank Account with ICICI Bank - Mumbai	26,95,797	
(c) In Savings Bank Account with Dena Bank- Kharel	98,035	
	1,68,79,819	
(a) With the Trustee	-	
(b) With the manager	15,264	1,68,95,083
Income and Expenditure Account		
Balance as per last Balance Sheet	-	
Less :- Appropriation, if any	-	
Add :- Deficit as per Income and	-	
Less :- Surplus Expenditure Account	-	-
<b>TOTAL</b>		<b>3,53,25,60,856</b>

# SUMMARY OF EXPENDITURE **SCHEDULE - IXC** Vide Rule 32

**The Maharashtra Public Trusts Act, 1950**

**Statement of income liable to contribution for the year ending: March 31, 2023**

**Name of Public Trust: LARSEN & TOUBRO PUBLIC CHARITABLE TRUST**

**Registered No: E - 22226**

	Rs	Rs
I. Income as shown in the Income and Expenditure Account (Schedule IX )		27,19,24,865
II Items not chargeable to Contribution under Section 58 and Rules 32		
(I) Donations received from other Public Trusts and Dharmadas		
(ii) Grants received from Government and Local authorities		
(iii) Interest on Sinking or Depreciation Fund		
(iv) Amount spent for the purpose of secular education	7,51,39,547	
(v) Amount spent for the purpose of medical relief	2,49,01,025	
(vi) Amount spent for the purpose of veterinary treatment of animals		
(vii) Expenditure incurred from donations for relief of distress caused by Scarcity, drought, flood, fire or other natural calamity		
(viii) Deductions out of income from lands used for agricultural purposes		
(a) Land Revenue and Local Fund Cess		
(b) Rent payable to superior landlord		
(c) Cost of production, if lands are cultivated by trust		
(ix) Deductions out of income from lands used for non-agricultural purposes		
(a) Assessment, cesses and other Government or Municipal Taxes		
(b) Ground rent payable to the superior landlord		
(c) Insurance premia		
(d) Repairs at 10 per cent of gross rent of building.		
(e) Cost of collection at 4 per cent of gross rent of buildings let out		
(x) Cost of collection of income or receipts from securities, stocks, etc at 1 per cent of such income		
(xi) Deductions on account of repairs in respect of buildings not rented and yielding no income, at 10 per cent of the estimated gross annual rent		
	10,00,40,572	
<b>Gross Annual Income chargeable to contribution</b>		<b>17,18,84,293</b>

# FINANCIALS SCHEDULE - IX

Vide Rule 17 (1)

The Maharashtra Public Trusts Act, 1950

Name of the Public Trust: LARSEN &amp; TOUBRO PUBLIC CHARITABLE TRUST

Registration No: E 22226

Balance Sheet As at March 31, 2023

EXPENDITURE	Rs.	Rs.
To Expenditure in respect of properties	-	-
To Establishment Expenses		43,78,646
To Remuneration to Trustees		-
To Remuneration (in the case of a Math) to the head of the Math including his household expenditure, if any		-
To Income Tax Prior Account-		-
To Depreciation		62,07,260
To Obsolescence		57,12,033
To Amount transferred to Reserve or Specific Funds		-
To Expenditure on objects of the Trust		
(a) Religious	-	
(b) Educational	7,51,39,547	
(c) Medical Relief	2,49,01,025	
(d) Poverty Alleviation	1,05,68,928	
(e) Other Charitable Objects	11,39,97,505	
		22,46,07,005
Provision for Diminution		-
To Surplus carried over to Balance Sheet		3,10,19,922
<b>Total</b>		<b>27,19,24,866</b>

INCOME	Rs.	Rs.
By Rent (accrued) (realised)	0	0
By Interest		
On Securities	22,21,94,849	
On Others	0	
On Bank Accounts	12,47,274	
On Fixed Deposits (HDFC Limited)	1,86,943	
		22,36,29,066
By Income from mutual funds		
Gain on redemption of mutual funds	2,41,83,339	
		2,41,83,339
By Profit on Sale of Securities (Net)		2,18,96,270
By Donations in Cash or Kind		
By Transfer from Reserve		-
By Miscellaneous income		22,16,191
By Deficit carried over to Balance Sheet		-
<b>TOTAL</b>		<b>27,19,24,866</b>

The background features a collage of four octagonal images. The top-right image shows five people standing in front of a solar panel array. The middle-right image shows a group of workers in hard hats and safety vests working on a construction site. The bottom-right image shows a group of people, including children, standing in front of a white van with a sign that reads 'Larsen & Toubro Public Charitable Trust'. The bottom-left image shows a group of people standing in front of a building. The text 'Larsen & TOUBRO' is in a large, bold, blue font, and 'Public Charitable Trust' is in a smaller, italicized, blue font.

# **Larsen & TOUBRO**

*Public Charitable Trust*

Larsen and Toubro Public Charitable Trust  
Landmark (A), 4th Floor  
Suren Road, Near WEH Metro Station,  
Andheri East, Mumbai 400043.

Email: [trust@larsentoubro.com](mailto:trust@larsentoubro.com)

[www.lnttrust.org](http://www.lnttrust.org)